

# Water entitlement market prices

## Murray–Darling Basin

(September 2017)

Prepared for Australian Government Department of Agriculture and Water Resources

**MARSDEN JACOB** ASSOCIATES

Marsden Jacob Associates  
Financial & Economic Consultants  
ABN 66 663 324 657  
ACN 072 233 204  
[Internet: http://www.marsdenjacob.com.au](http://www.marsdenjacob.com.au)  
[E-mail: economists@marsdenjacob.com.au](mailto:economists@marsdenjacob.com.au)

This product has been prepared in accordance with the scope of services described in the contract or agreement between Marsden Jacob Associates Pty Ltd ACN 072 233 204 (MJA) and the Client. Any findings, conclusions or recommendations only apply to the aforementioned circumstances and no greater reliance should be assumed or drawn by the Client. Furthermore, the report has been prepared solely for use by the Client and Marsden Jacob Associates accepts no responsibility for its use by other parties.

Copyright © Marsden Jacob Associates Pty Ltd 2017

## Introduction

This September 2017 monthly water entitlement market prices report has been prepared by Marsden Jacob Associates (Marsden Jacob) for the Australian Government Department of Agriculture and Water Resources.

A water access entitlement is a perpetual or ongoing entitlement to exclusive access to a share of water from a specified consumptive pool, as defined in the relevant water plan.

The report includes:

- southern Murray–Darling Basin (MDB) market activity and price information, by region and entitlement type
- northern MDB market activity and price information, by region and entitlement type
- a list of catchments and water sources
- a list of data outliers removed from the trade data

## Regions, entitlements and key statistics

The entitlement price report is broadly split into the southern and the northern MDB, as detailed in Table 1 and Table 2. Interactive maps showing the location of these trading regions are available on the Murray–Darling Basin Authority's website.

The water sources included in each of the regions are listed in Appendix A.

**Table 1: Regions and entitlement types, southern MDB**

Region	Entitlement type
SA Murray	Class 3a
Vic. Murray above Barmah Choke	High reliability
Vic. Murray above Barmah Choke	Low reliability
Vic. Murray below Barmah Choke	High reliability
Vic. Murray below Barmah Choke	Low reliability
Goulburn	High reliability
Goulburn	Low reliability
Campaspe	High reliability
Loddon	High reliability
NSW Murray	General security
NSW Murray	High security
NSW Murray Irrigation Limited	General security
Murrumbidgee	General security
Murrumbidgee	High security
Lower Darling	General security
Lower Darling	High security

**Table 2: Regions and entitlement types, northern MDB**

Region	Entitlement type
Macquarie	General security
Namoi	General security
Gwydir	General security
NSW Border Rivers	General security
Barwon–Darling	Unregulated
Lachlan	General security
Condamine–Balonne (St George)	Supplemented
Condamine–Balonne (Upper Condamine and Lower Balonne)	Unsupplemented
Central Condamine Alluvium Groundwater (1, 2, 3 and 4)	Groundwater (sub areas 1, 2, 3 and 4)
Upper Condamine Alluvium Groundwater (Dalrymple Creek)	Groundwater
Upper Condamine Alluvium Groundwater (Oakey Creek)	Groundwater
Qld Border Rivers	Supplemented
Qld Border Rivers	Unsupplemented
Lower Balonne	Overland flow

As requested by the department, for each of the regions and water entitlement categories Marsden Jacob reports a range of measures, subject to data availability and the number of trades:

- volume weighted average price (VWAP)
- median price
- mean price
- mode price
- 25th and 75th percentile prices
- price quintiles
- trade volume
- number of trades
- water trading exchange prices.

## Data sources

The data sources for this report are:

- National Water Market Register data, up to 31 December 2013
- state government water registers and websites

- water exchange and broker noticeboard prices.

## Notes

Entitlement prices in the state government water registers can lag the exchange date of contracts or water sale agreements by periods of days to several months. This means the entitlement prices shown in the monthly and quarterly VWAPs may not reflect all exchanges during the month.

Entitlement prices that do not appear to reflect arm's-length transactions have been excluded in the data cleaning process (see Appendix B).

Removing these values reduces price distortions in the reporting. This means prices in this report may differ from prices shown in registers where these transactions have not been removed.

Marsden Jacob uses a two-stage process to clean the data:

1. Removing prices that may not be genuine; for example, removing transactions where the price was reported to be null (\$0 per ML)
2. Reviewing and potentially removing transactions outside two standard deviations from the average price of water entitlements by region (or trading zone) and by water product.

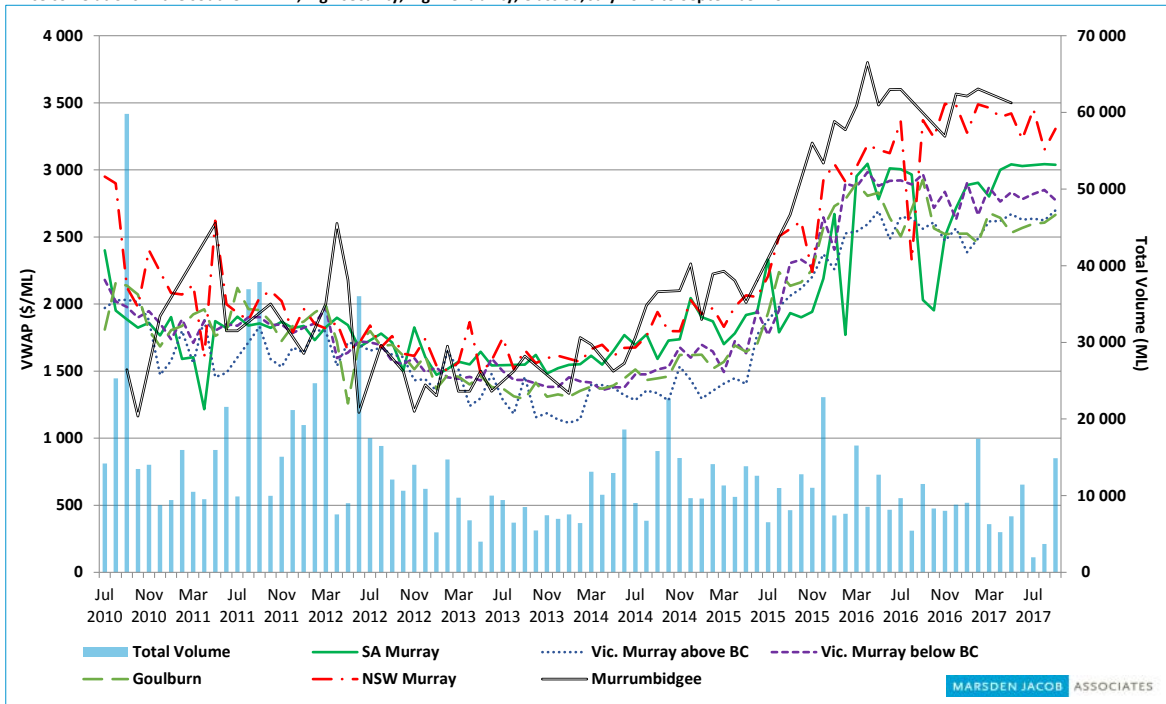
Marsden Jacob does not necessarily remove all trades that fall outside two standard deviations, as some of them reflect arm's-length trades. If trades that fall outside two standard deviations are retained in the regional dataset, this is noted in the region and entitlement-specific reports. Also, trades that fall within two standard deviations but are removed because they are not considered representative on the basis of recent data trends are also noted in the region and entitlement-specific reports as well as Appendix B.

Water entitlement market prices Murray–Darling Basin (September 2017)

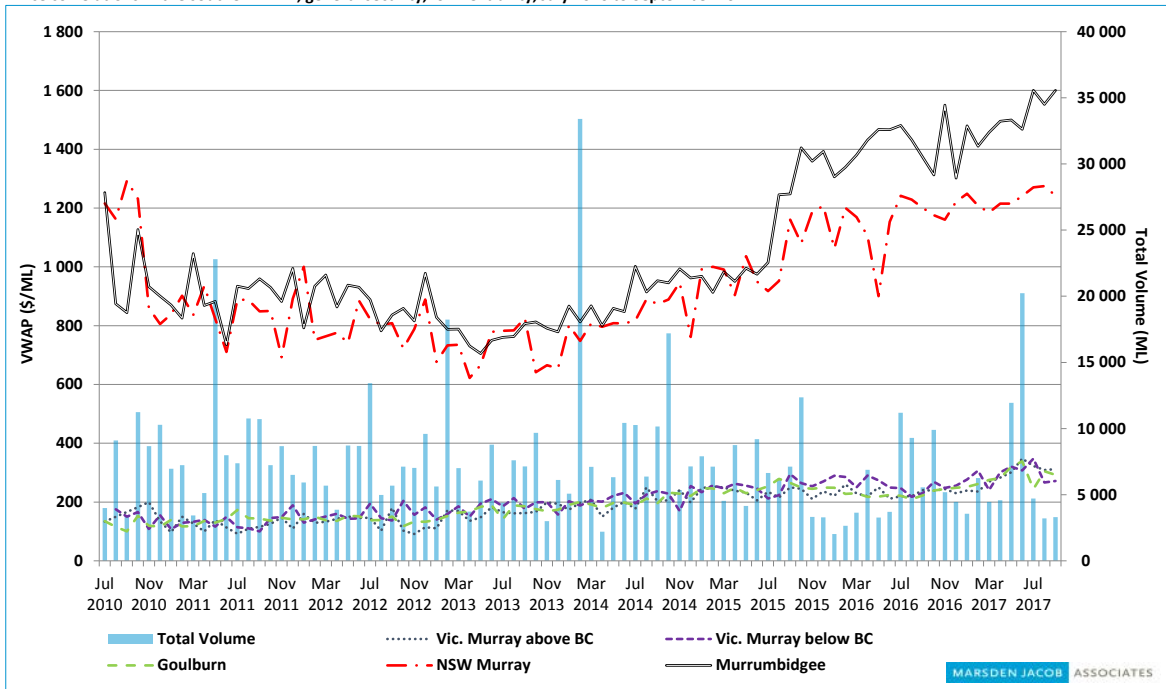
**MARSDEN JACOB** ASSOCIATES

## Southern Murray–Darling Basin

Price correlations in the southern MDB, high security, high reliability, Class 3a, July 2010 to September 2017



Price correlations in the southern MDB, general security, low reliability, July 2010 to September 2017

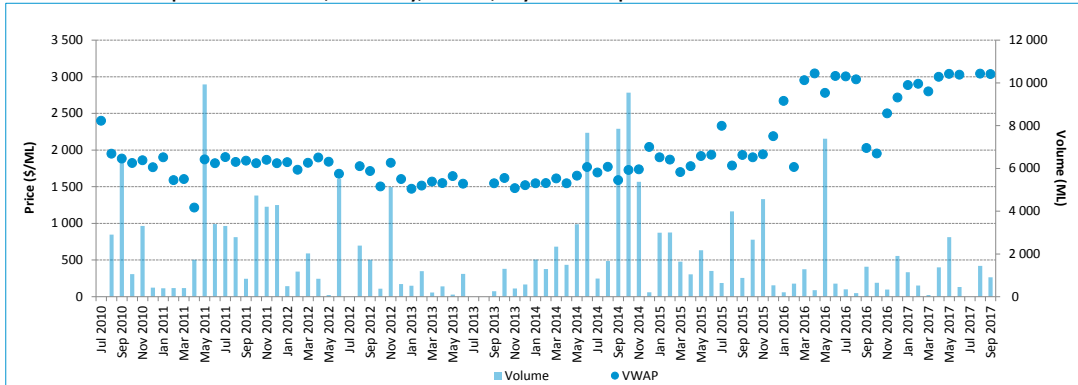


Source: Marsden Jacob analysis, 2017.

Water entitlement market prices Murray–Darling Basin (September 2017)

## Southern Australian Murray: Class 3a

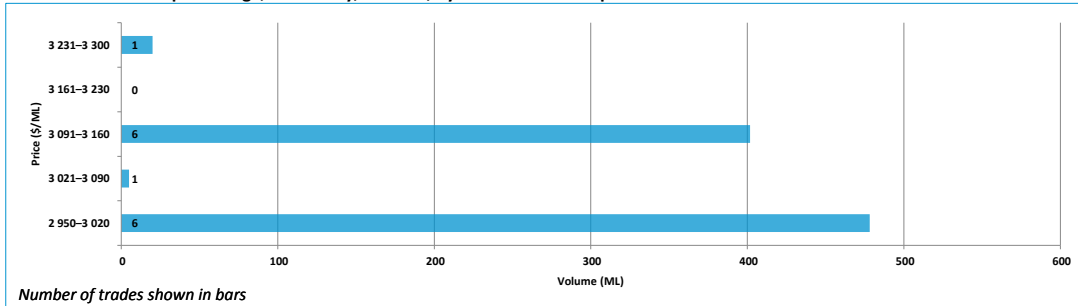
Entitlement market prices and volumes, SA Murray, Class 3a, July 2010 to September 2017



Entitlement market prices and volumes, SA Murray, Class 3a

Volume weighted average price (\$/ML)			September 2017 (in \$/ML)					September 2017 Volume	September 2017 # of trades	Broker buy/sell range (\$/ML)
Month of September 2017	September 2017 Quarter	past 12 months	25th percentile	75th percentile	Median	Mean	Mode			
3 038	3 041	2 883	3 008	3 116	3 075	3 072	3 008	905	14	3 000 - 3 300

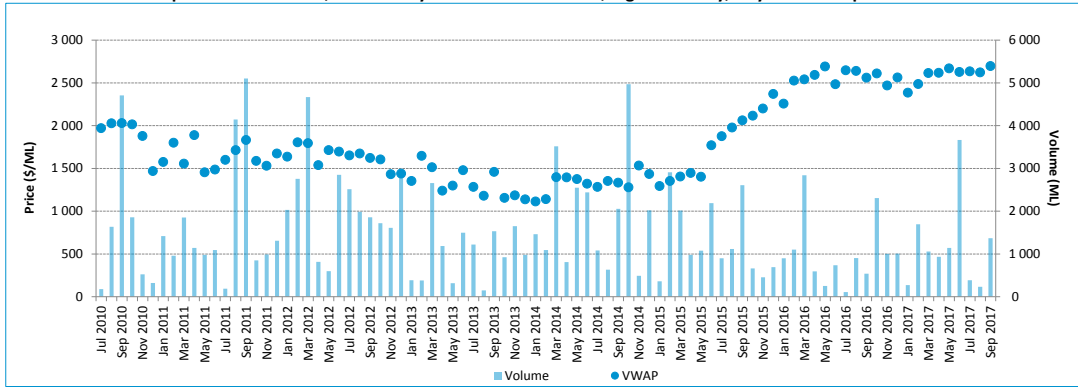
Entitlement market price range, SA Murray, Class 3a, by volume month September 2017



Water entitlement market prices Murray–Darling Basin (September 2017)

## Victorian Murray above Barmah Choke: high reliability

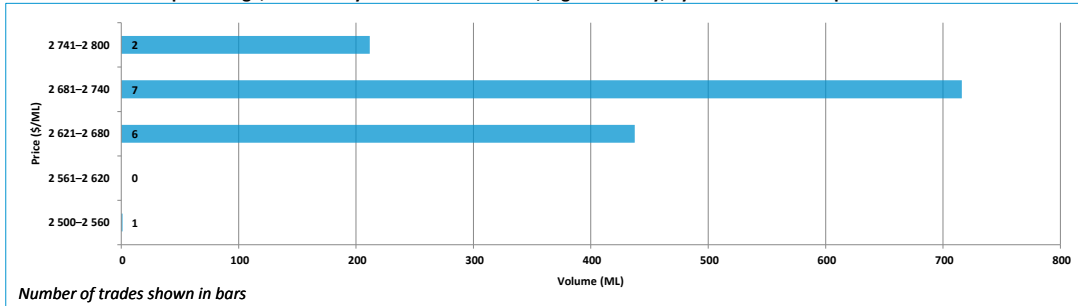
Entitlement market prices and volumes, Vic. Murray above Barmah Choke, high reliability, July 2010 to September 2017



Entitlement market prices and volumes, Vic. Murray above Barmah Choke, high reliability

Volume weighted average price (\$/ML)			September 2017 (in \$/ML)						September 2017 Volume	September 2017 # of trades	Broker buy/sell range (\$/ML)
Month of September 2017	September 2017 Quarter	past 12 months	25th percentile	75th percentile	Median	Mean	Mode				
2 698	2 678	2 599	2 650	2 700	2 695	2 679	2 700	1 366	16	2 650 - 2 800	

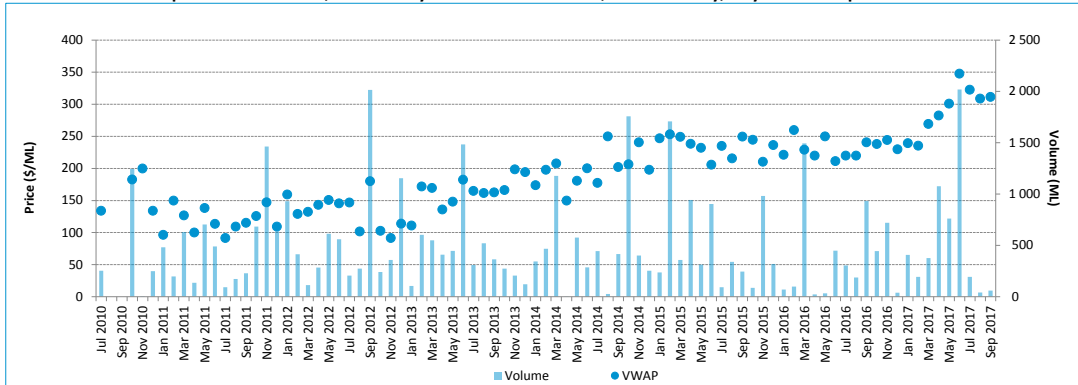
Entitlement market price range, Vic. Murray above Barmah Choke, high reliability, by volume month September 2017



Water entitlement market prices Murray–Darling Basin (September 2017)

## Victorian Murray above Barmah Choke: low reliability

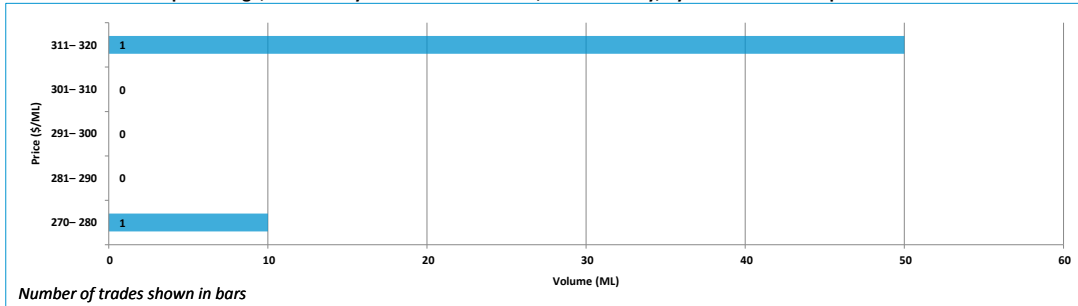
Entitlement market prices and volumes, Vic. Murray above Barmah Choke, low reliability, July 2010 to September 2017



Entitlement market prices and volumes, Vic. Murray above Barmah Choke, low reliability

Volume weighted average price (\$/ML)			September 2017 (in \$/ML)						September 2017 Volume	September 2017 # of trades	Broker buy/sell range (\$/ML)
Month of September 2017	September 2017 Quarter	past 12 months	25th percentile	75th percentile	Median	Mean	Mode				
312	319	295	283	308	295	295	0	60	2	270 - 350	

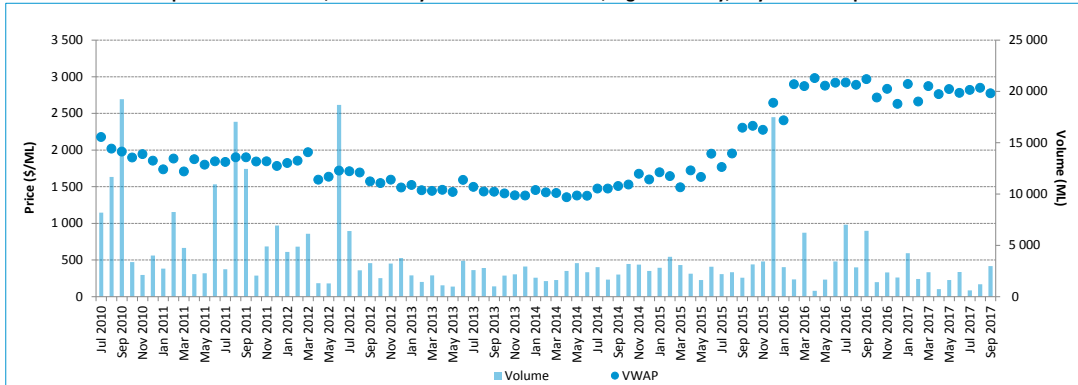
Entitlement market price range, Vic. Murray above Barmah Choke, low reliability, by volume month September 2017



Water entitlement market prices Murray–Darling Basin (September 2017)

## Victorian Murray below Barmah Choke: high reliability

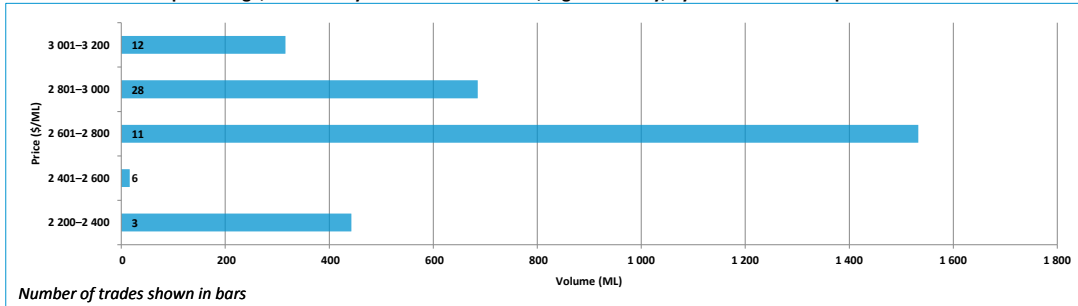
Entitlement market prices and volumes, Vic. Murray below Barmah Choke, high reliability, July 2010 to September 2017



Entitlement market prices and volumes, Vic. Murray below Barmah Choke, high reliability

Volume weighted average price (\$/ML)			September 2017 (in \$/ML)						September 2017 Volume	September 2017 # of trades	Broker buy/sell range (\$/ML)
Month of September 2017	September 2017 Quarter	past 12 months	25th percentile	75th percentile	Median	Mean	Mode				
2 775	2 800	2 800	2 800	3 000	2 900	2 868	3 000	2 992	60	2 900 - 3 500	

Entitlement market price range, Vic. Murray below Barmah Choke, high reliability, by volume month September 2017



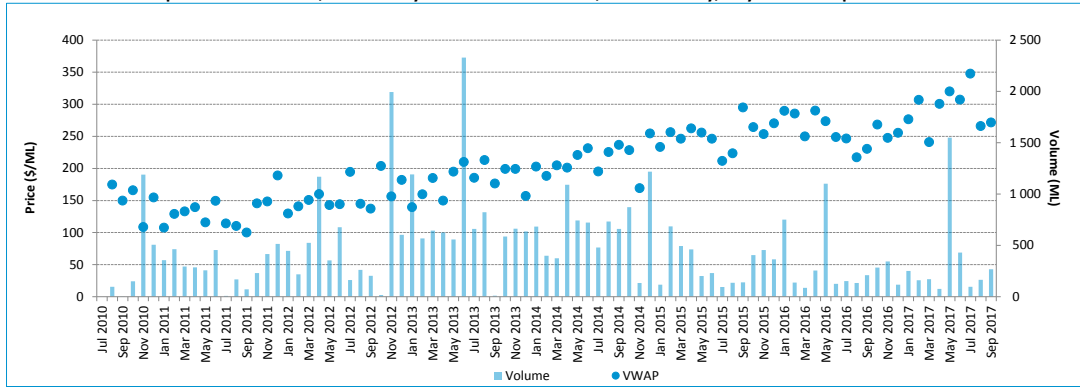
Number of trades shown in bars

Water entitlement market prices Murray–Darling Basin (September 2017)



## Victorian Murray below Barmah Choke: low reliability

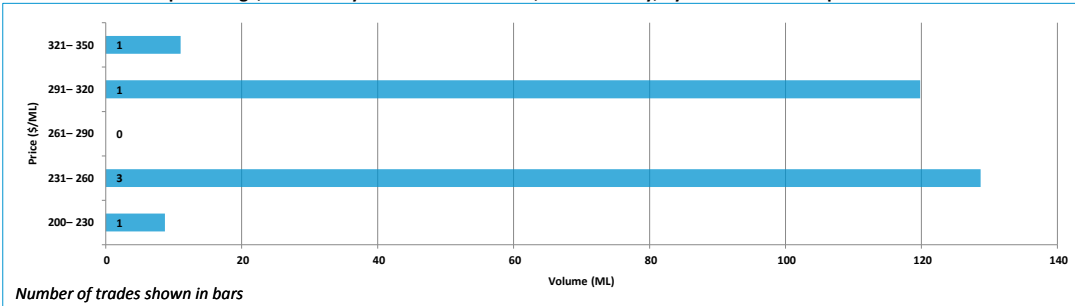
Entitlement market prices and volumes, Vic. Murray below Barmah Choke, low reliability, July 2010 to September 2017



Entitlement market prices and volumes, Vic. Murray below Barmah Choke, low reliability

Volume weighted average price (\$/ML)			September 2017 (in \$/ML)						September 2017 Volume	September 2017 # of trades	Broker buy/sell range (\$/ML)
Month of September 2017	September 2017 Quarter	past 12 months	25th percentile	75th percentile	Median	Mean	Mode				
272	284	295	244	290	255	267	0	268	6	300 - 360	

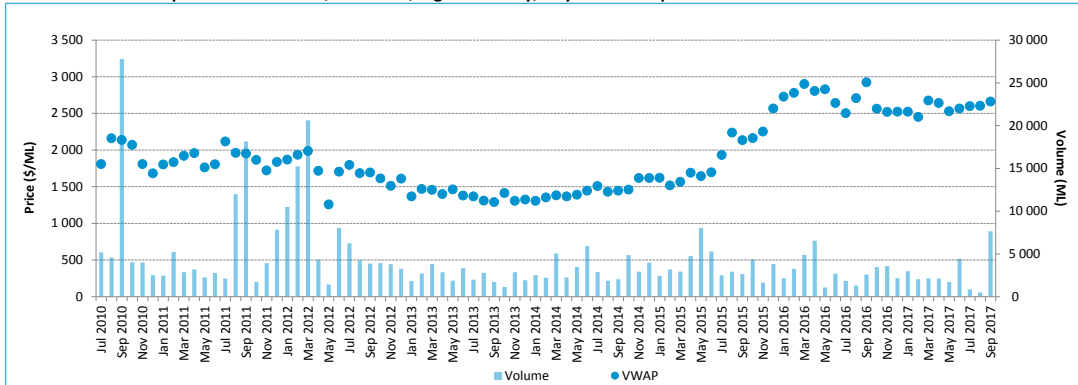
Entitlement market price range, Vic. Murray below Barmah Choke, low reliability, by volume month September 2017



Water entitlement market prices Murray–Darling Basin (September 2017)

## Goulburn: high reliability

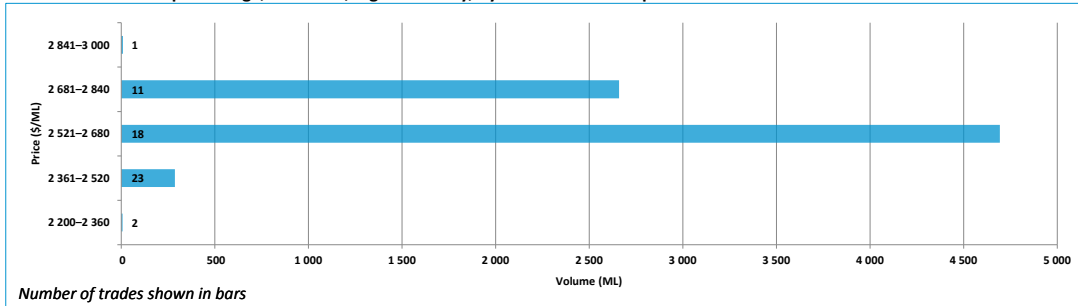
Entitlement market prices and volumes, Goulburn, high reliability, July 2010 to September 2017



Entitlement market prices and volumes, Goulburn, high reliability

Volume weighted average price (\$/ML)			September 2017 (in \$/ML)					September 2017 Volume	September 2017 # of trades	Broker buy/sell range (\$/ML)
Month of September 2017	September 2017 Quarter	past 12 months	25th percentile	75th percentile	Median	Mean	Mode			
2 664	2 655	2 582	2 500	2 650	2 600	2 578	2 500	7 654	55	2 500 - 3 000

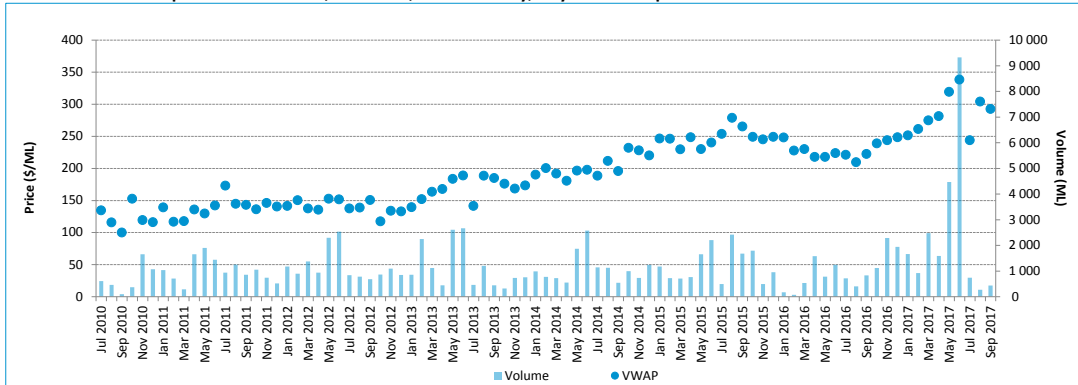
Entitlement market price range, Goulburn, high reliability, by volume month September 2017



Water entitlement market prices Murray-Darling Basin (September 2017)

## Goulburn: low reliability

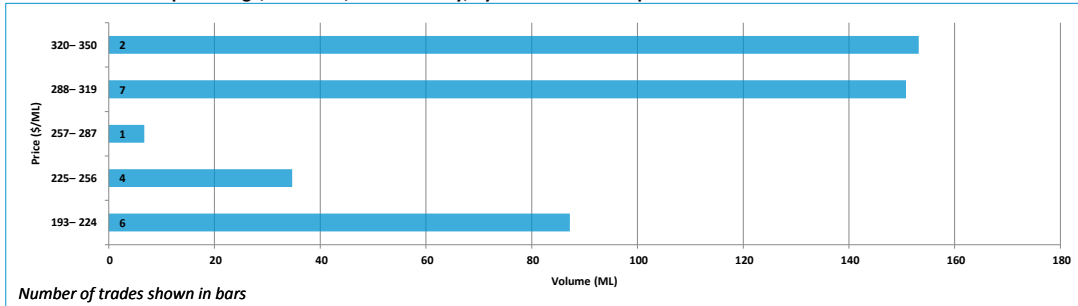
Entitlement market prices and volumes, Goulburn, low reliability, July 2010 to September 2017



Entitlement market prices and volumes, Goulburn, low reliability

Volume weighted average price (\$/ML)			September 2017 (in \$/ML)					September 2017 Volume	September 2017 # of trades	Broker buy/sell range (\$/ML)
Month of September 2017	September 2017 Quarter	past 12 months	25th percentile	75th percentile	Median	Mean	Mode			
293	270	296	200	300	263	263	300	433	20	250 - 350

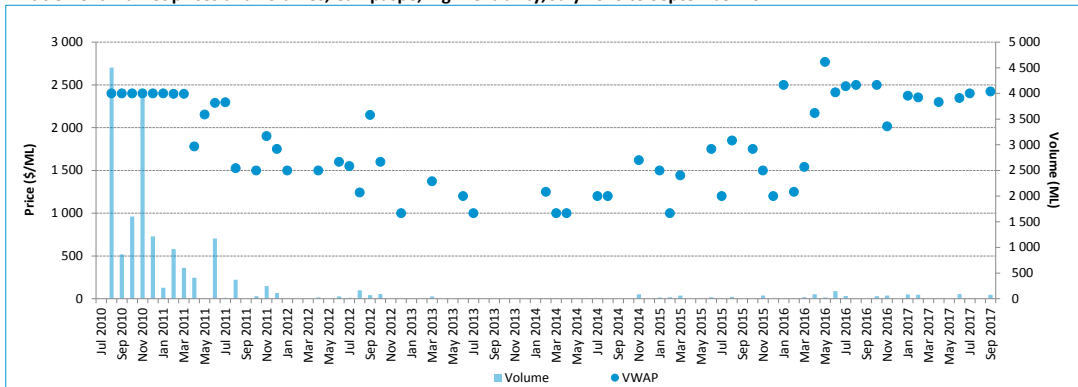
Entitlement market price range, Goulburn, low reliability, by volume month September 2017



Water entitlement market prices Murray–Darling Basin (September 2017)

## Campaspe: high reliability

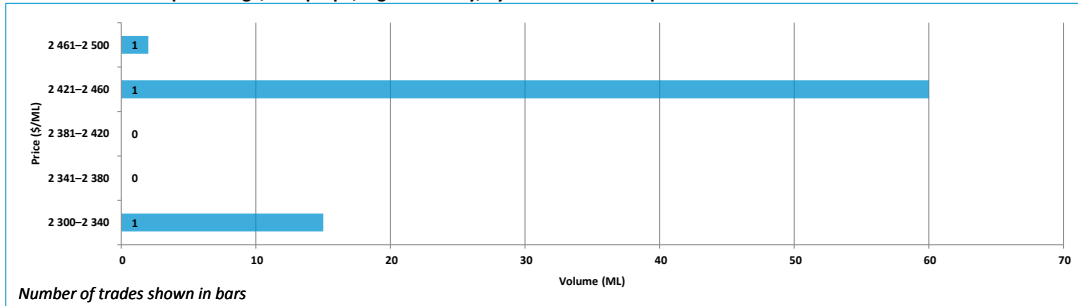
Entitlement market prices and volumes, Campaspe, high reliability, July 2010 to September 2017



Entitlement market prices and volumes, Campaspe, high reliability

Volume weighted average price (\$/ML)			September 2017 (in \$/ML)					September 2017 Volume	September 2017 # of trades	Broker buy/sell range (\$/ML)
Month of September 2017	September 2017 Quarter	past 12 months	25th percentile	75th percentile	Median	Mean	Mode			
2 422	2 421	2 338	2 375	2 475	2 450	2 417	0	77	3	2 300 - 2 500

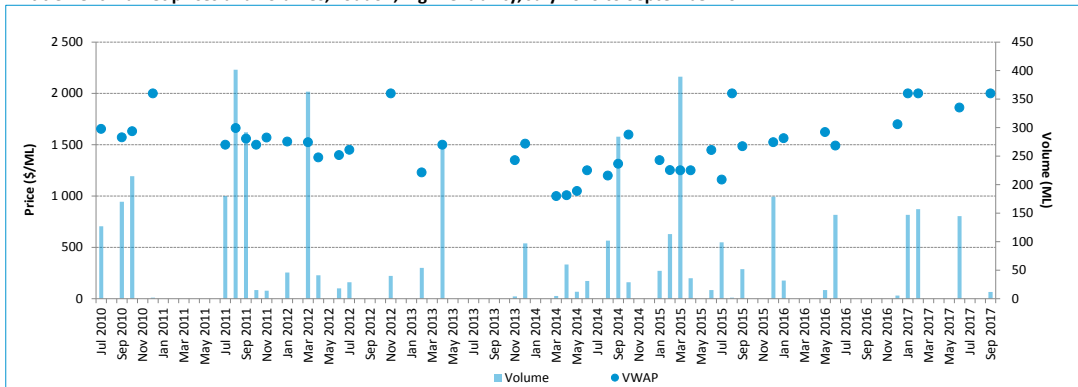
Entitlement market price range, Campaspe, high reliability, by volume month September 2017



Water entitlement market prices Murray–Darling Basin (September 2017)

## Loddon: high reliability

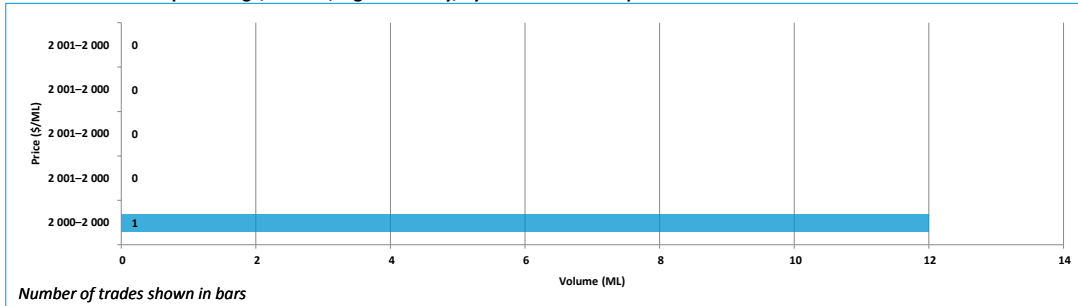
Entitlement market prices and volumes, Loddon, high reliability, July 2010 to September 2017



Entitlement market prices and volumes, Loddon, high reliability

Volume weighted average price (\$/ML)			September 2017 (in \$/ML)						September 2017 Volume	September 2017 # of trades	Broker buy/sell range (\$/ML)
Month of September 2017	September 2017 Quarter	past 12 months	25th percentile	75th percentile	Median	Mean	Mode				
2 000	2 000	1 953	2 000	2 000	2 000	2 000	0	12	1	2 000 - 2 100	

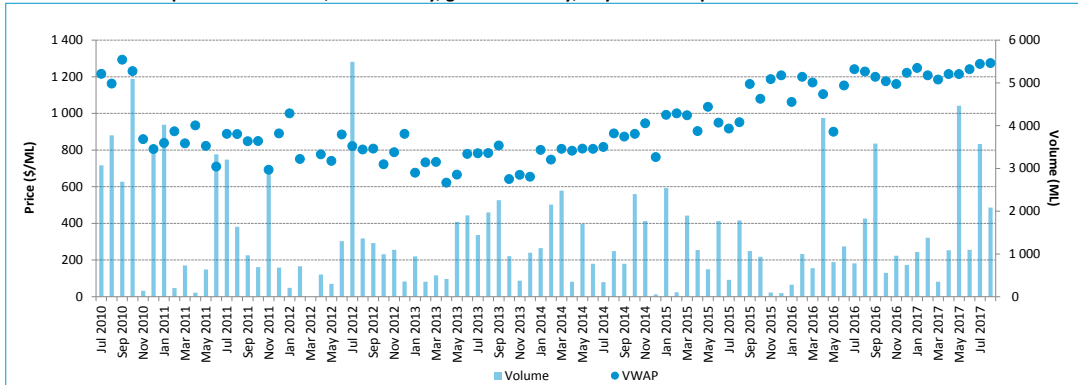
Entitlement market price range, Loddon, high reliability, by volume month September 2017



Water entitlement market prices Murray-Darling Basin (September 2017)

## New South Wales Murray: general security

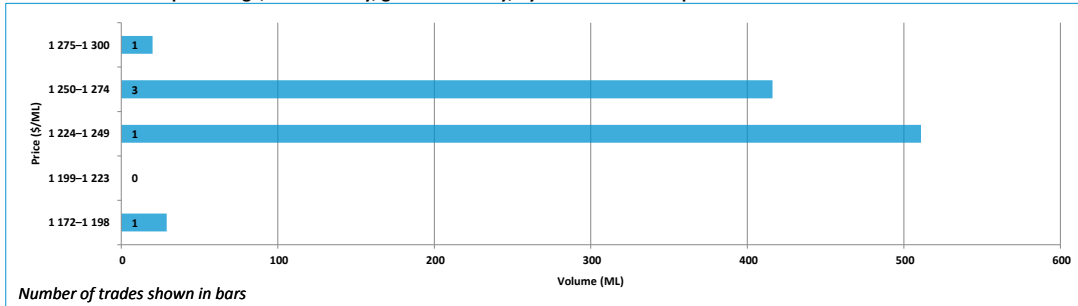
Entitlement market prices and volumes, NSW Murray, general security, July 2010 to September 2017



Entitlement market prices and volumes, NSW Murray, general security

Volume weighted average price (\$/ML)			September 2017 (in \$/ML)						September 2017 Volume	September 2017 # of trades	Broker buy/sell range (\$/ML)
Month of September 2017	September 2017 Quarter	past 12 months	25th percentile	75th percentile	Median	Mean	Mode				
1 242	1 268	1 233	1 241	1 258	1 250	1 245	1 250	976	6	1 200 - 1 500	

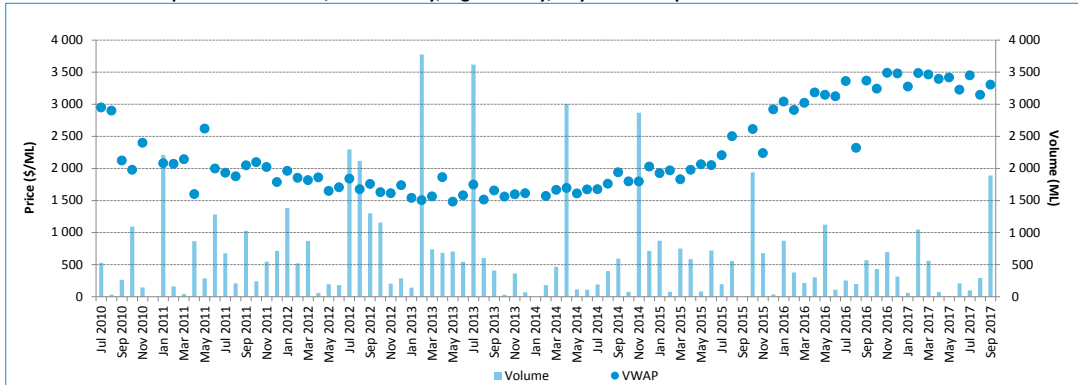
Entitlement market price range, NSW Murray, general security, by volume month September 2017



Water entitlement market prices Murray-Darling Basin (September 2017)

## New South Wales Murray: high security

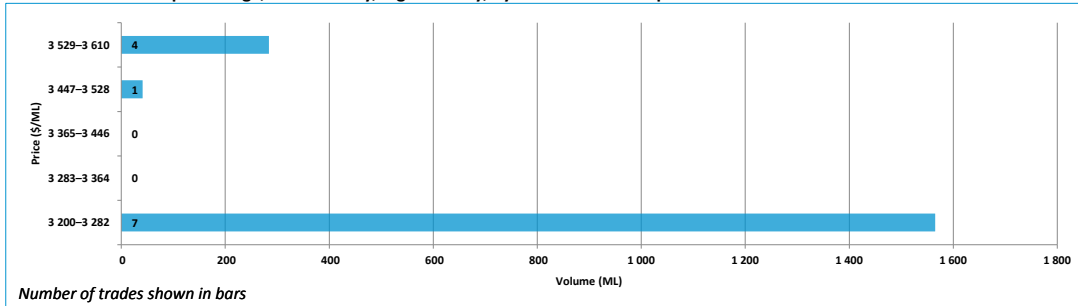
Entitlement market prices and volumes, NSW Murray, high security, July 2010 to September 2017



Entitlement market prices and volumes, NSW Murray, high security

Volume weighted average price (\$/ML)			September 2017 (in \$/ML)					September 2017 Volume	September 2017 # of trades	Broker buy/sell range (\$/ML)
Month of September 2017	September 2017 Quarter	past 12 months	25th percentile	75th percentile	Median	Mean	Mode			
3 306	3 292	3 375	3 256	3 535	3 256	3 368	3 256	1 890	12	3 200 - 4 500

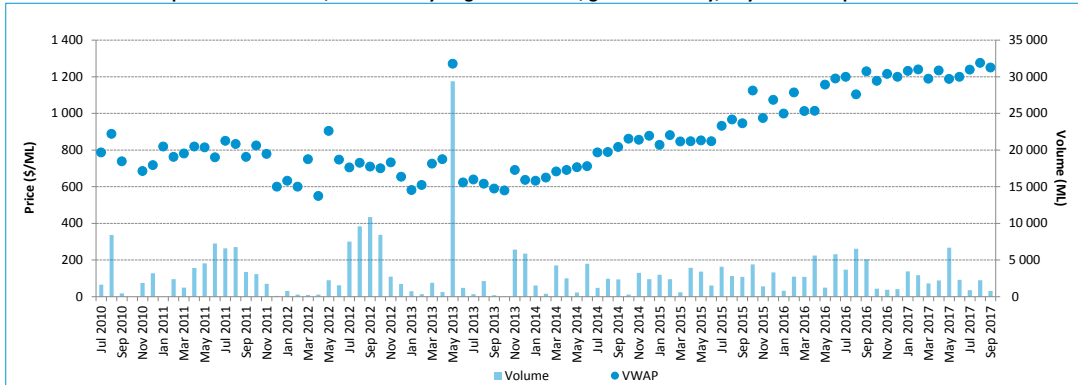
Entitlement market price range, NSW Murray, high security, by volume month September 2017



Water entitlement market prices Murray–Darling Basin (September 2017)

# New South Wales Murray Irrigation Limited

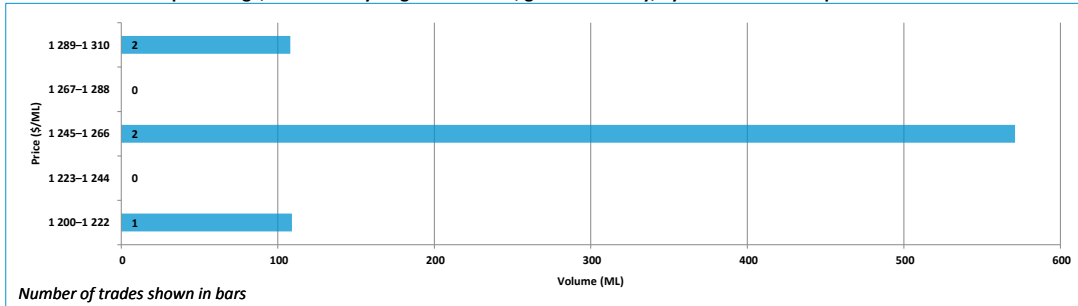
Entitlement market prices and volumes, NSW Murray Irrigation Limited, general security, July 2010 to September 2017



Entitlement market prices and volumes, NSW Murray Irrigation Limited, general security

Volume weighted average price (\$/ML)			September 2017 (in \$/ML)						September 2017 Volume	September 2017 # of trades	Broker buy/sell range (\$/ML)
Month of September 2017	September 2017 Quarter	past 12 months	25th percentile	75th percentile	Median	Mean	Mode				
1 251	1 263	1 217	1 250	1 300	1 250	1 262	1 250	788	5	1 000 - 1 300	

Entitlement market price range, NSW Murray Irrigation Limited, general security, by volume month September 2017



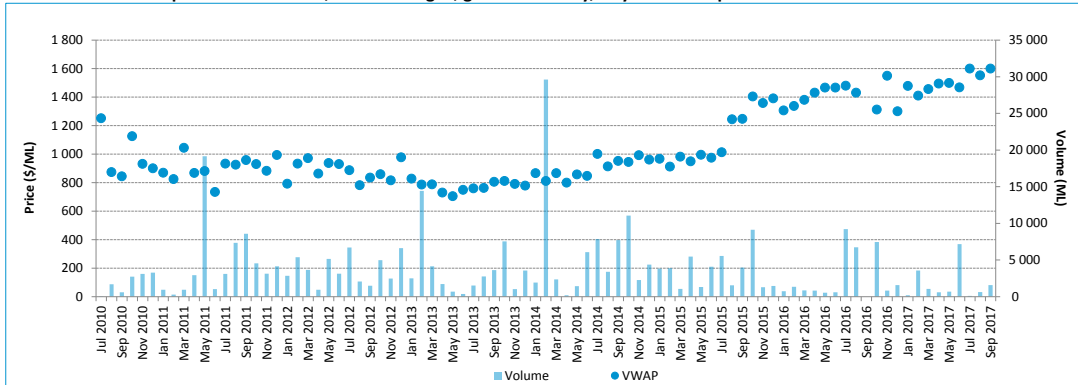
Number of trades shown in bars

Water entitlement market prices Murray–Darling Basin (September 2017)



## Murrumbidgee: general security

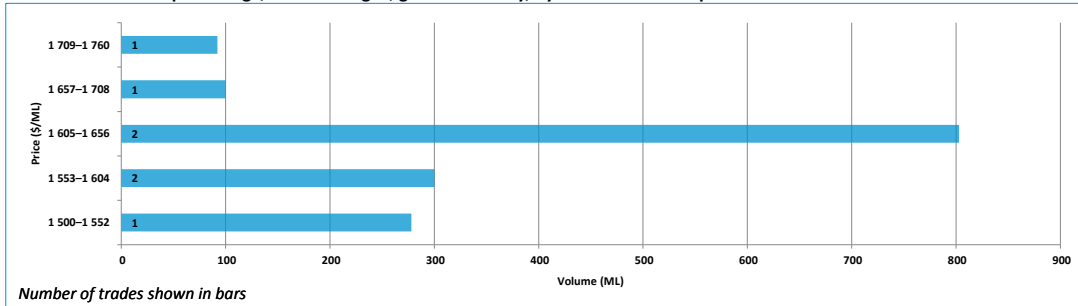
Entitlement market prices and volumes, Murrumbidgee, general security, July 2010 to September 2017



Entitlement market prices and volumes, Murrumbidgee, general security

Volume weighted average price (\$/ML)			September 2017 (in \$/ML)					September 2017 Volume	September 2017 # of trades	Broker buy/sell range (\$/ML)
Month of September 2017	September 2017 Quarter	past 12 months	25th percentile	75th percentile	Median	Mean	Mode			
1 600	1 587	1 419	1 582	1 655	1 610	1 620	0	1 573	7	1 500 - 1 700

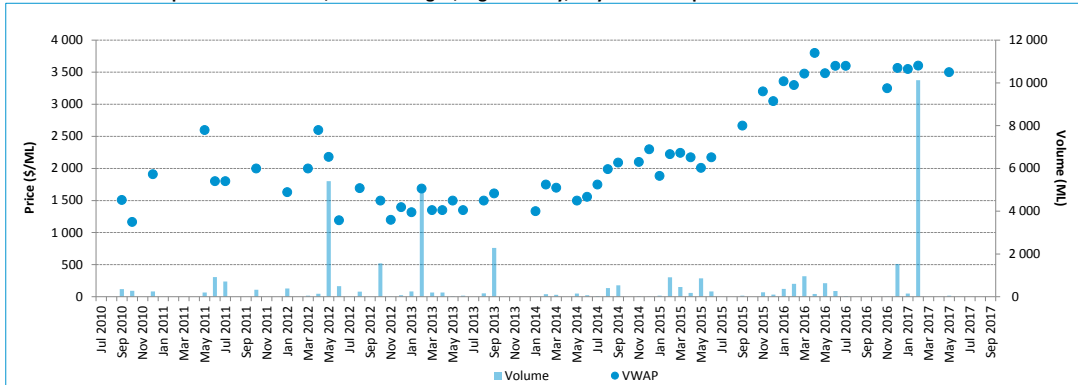
Entitlement market price range, Murrumbidgee, general security, by volume month September 2017



Water entitlement market prices Murray-Darling Basin (September 2017)

## Murrumbidgee: high security

Entitlement market prices and volumes, Murrumbidgee, high security, July 2010 to September 2017



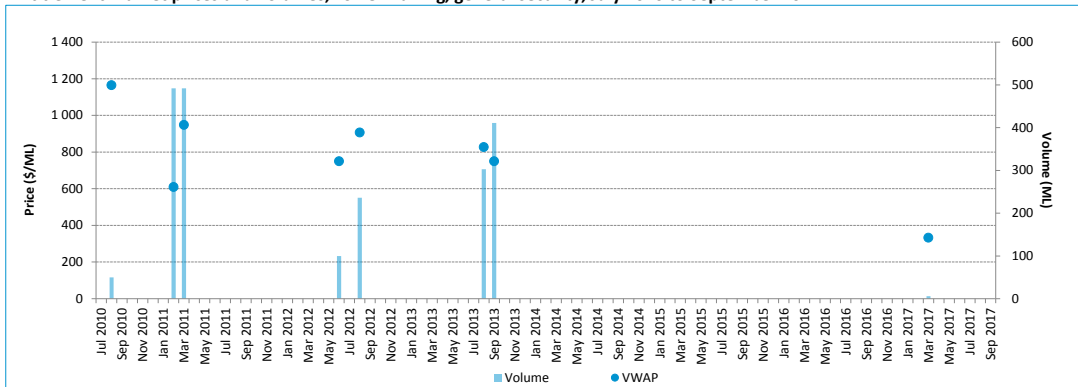
Entitlement market prices and volumes, Murrumbidgee, high security

Volume weighted average price (\$/ML)		September 2017 (in \$/ML)							September 2017 Volume	September 2017 # of trades	Broker buy/sell range (\$/ML)
Month of September 2017	September 2017 Quarter	past 12 months	25th percentile	75th percentile	Median	Mean	Mode				
-	-	3 597	-	-	-	-	-	-	-	-	3 500 - 4 000

Water entitlement market prices Murray–Darling Basin (September 2017)

## Lower Darling: general security

Entitlement market prices and volumes, Lower Darling, general security, July 2010 to September 2017



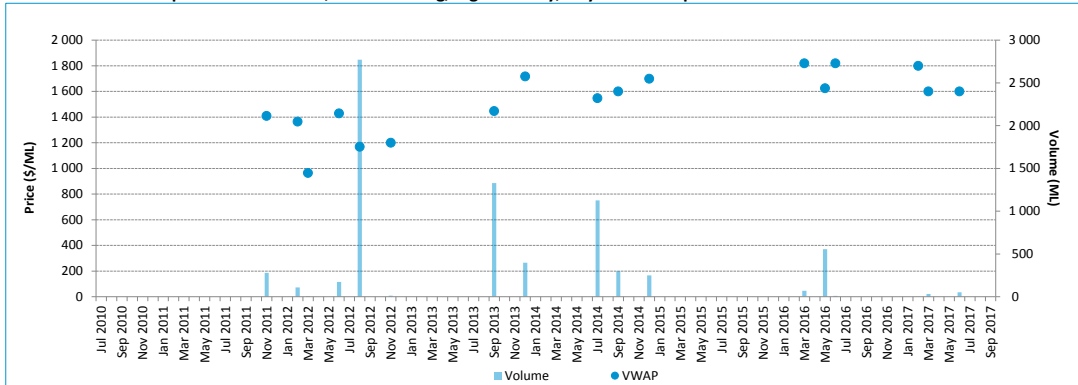
Entitlement market prices and volumes, Lower Darling, general security

Volume weighted average price (\$/ML)			September 2017 (in \$/ML)						September 2017 Volume	September 2017 # of trades	Broker buy/sell range (\$/ML)
Month of September 2017	September 2017 Quarter	past 12 months	25th percentile	75th percentile	Median	Mean	Mode				
-	-	333	-	-	-	-	-	-	-	No listings	

Water entitlement market prices Murray–Darling Basin (September 2017)

## Lower Darling: high security

Entitlement market prices and volumes, Lower Darling, high security, July 2010 to September 2017



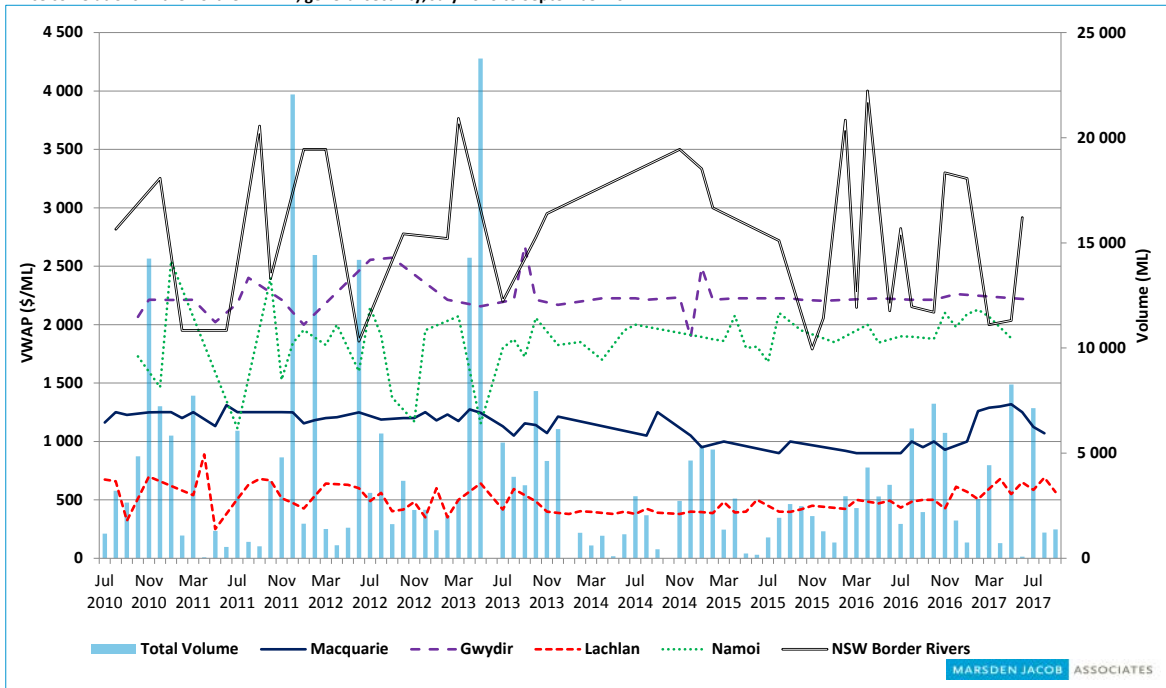
Entitlement market prices and volumes, Lower Darling, high security

Volume weighted average price (\$/ML)			September 2017 (in \$/ML)						September 2017 Volume	September 2017 # of trades	Broker buy/sell range (\$/ML)
Month of September 2017	September 2017 Quarter	past 12 months	25th percentile	75th percentile	Median	Mean	Mode				
-	-	1 605	-	-	-	-	-	-	-	No listings	

Water entitlement market prices Murray–Darling Basin (September 2017)

## Northern Murray–Darling Basin

Price correlations in the northern MDB, general security, July 2010 to September 2017



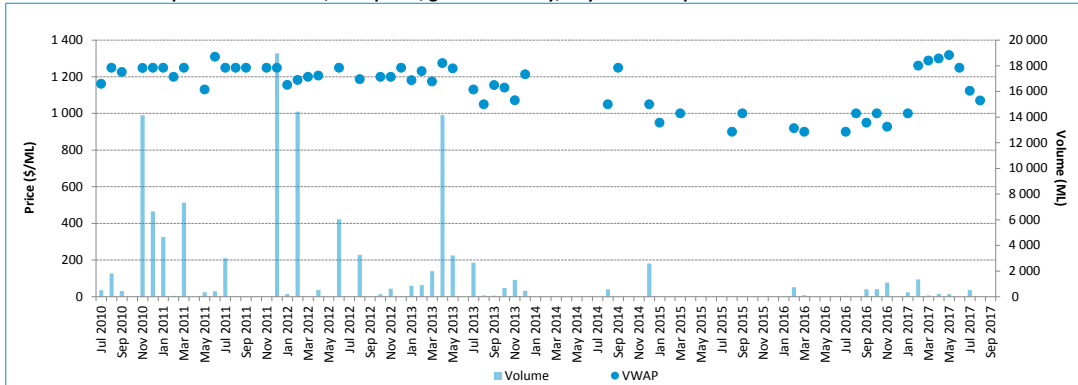
Source: Marsden Jacob analysis, 2017.

Water entitlement market prices Murray–Darling Basin (September 2017)

**MARSDEN JACOB ASSOCIATES**

## Macquarie: general security

Entitlement market prices and volumes, Macquarie, general security, July 2010 to September 2017



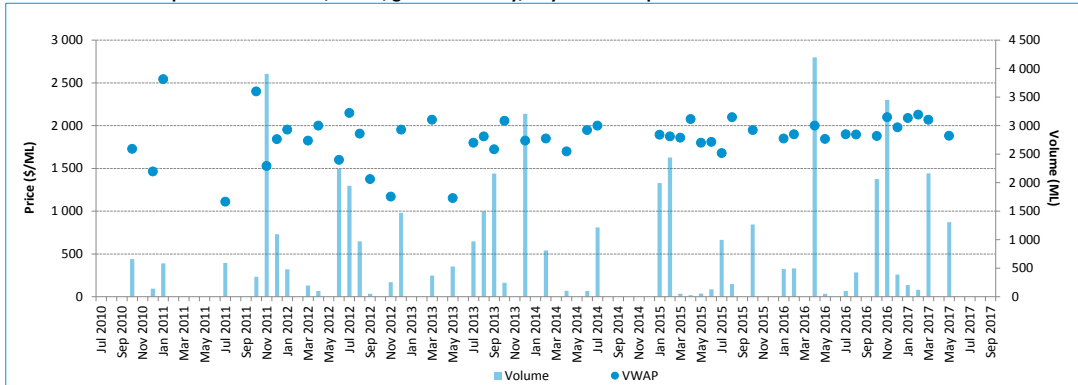
Entitlement market prices and volumes, Macquarie, general security

Volume weighted average price (\$/ML)			September 2017 (in \$/ML)						September 2017 Volume	September 2017 # of trades	Broker buy/sell range (\$/ML)
Month of September 2017	September 2017 Quarter	past 12 months	25th percentile	75th percentile	Median	Mean	Mode				
-	1 122	1 113	-	-	-	-	-	-	-	-	1 100 - 1 450

Water entitlement market prices Murray–Darling Basin (September 2017)

## Namoi: general security

Entitlement market prices and volumes, Namoi, general security, July 2010 to September 2017



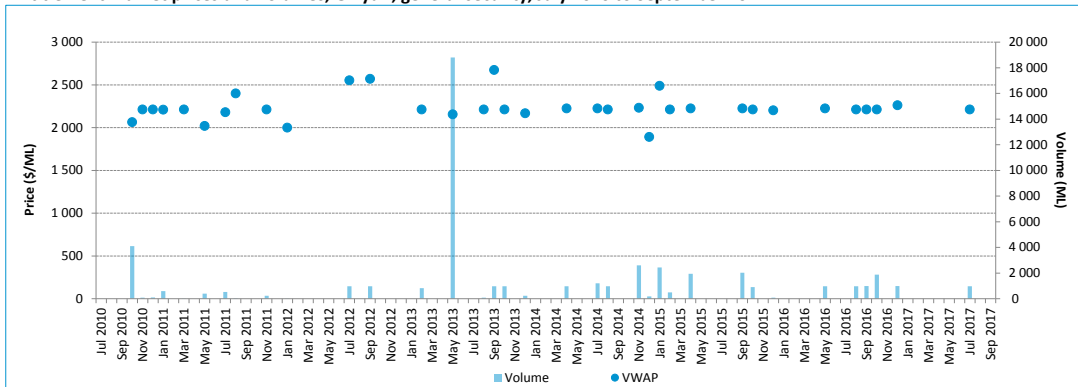
Entitlement market prices and volumes, Namoi, general security

Volume weighted average price (\$/ML)		September 2017 (in \$/ML)							September 2017 Volume	September 2017 # of trades	Broker buy/sell range (\$/ML)
Month of September 2017	September 2017 Quarter	past 12 months	25th percentile	75th percentile	Median	Mean	Mode				
-	-	2 012	-	-	-	-	-	-	-	-	1 850 - 2 500

Water entitlement market prices Murray–Darling Basin (September 2017)

## Gwydir: general security

Entitlement market prices and volumes, Gwydir, general security, July 2010 to September 2017



Entitlement market prices and volumes, Gwydir, general security

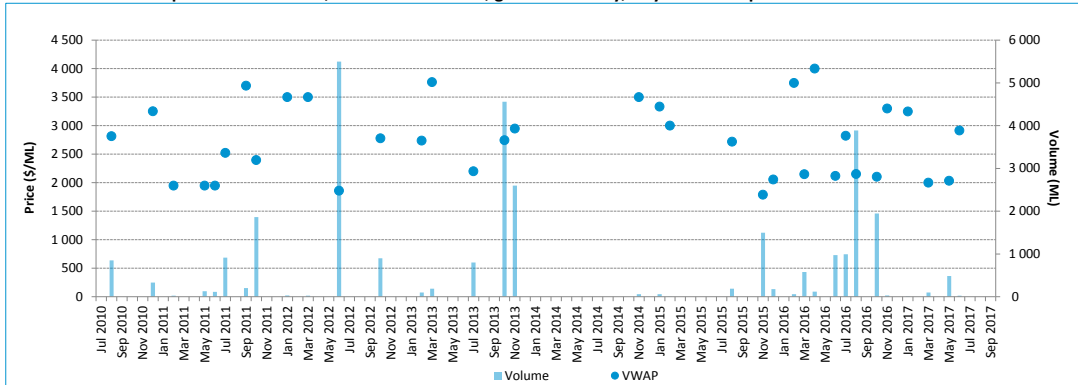
Volume weighted average price (\$/ML)			September 2017 (in \$/ML)						September 2017 Volume	September 2017 # of trades	Broker buy/sell range (\$/ML)
Month of September 2017	September 2017 Quarter	past 12 months	25th percentile	75th percentile	Median	Mean	Mode				
-	2 212	2 225	-	-	-	-	-	-	-	No listings	

Water entitlement market prices Murray–Darling Basin (September 2017)



## New South Wales Border Rivers: general security

Entitlement market prices and volumes, NSW Border Rivers, general security, July 2010 to September 2017



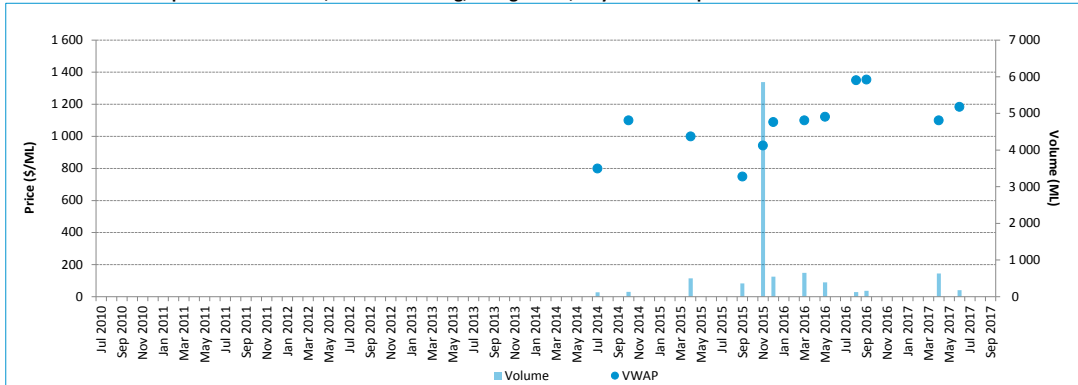
Entitlement market prices and volumes, NSW Border Rivers, general security

Volume weighted average price (\$/ML)		September 2017 (in \$/ML)							September 2017 Volume	September 2017 # of trades	Broker buy/sell range (\$/ML)
Month of September 2017	September 2017 Quarter	past 12 months	25th percentile	75th percentile	Median	Mean	Mode				
-	-	2 114	-	-	-	-	-	-	-	- 2 200 - 3 700	

Water entitlement market prices Murray–Darling Basin (September 2017)

## Barwon–Darling: unregulated

Entitlement market prices and volumes, Barwon–Darling, unregulated, July 2010 to September 2017



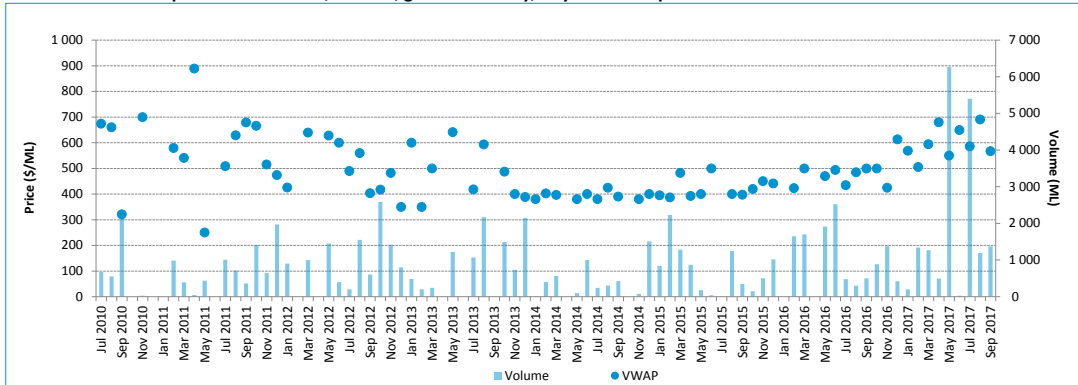
Entitlement market prices and volumes, Barwon–Darling, unregulated

Volume weighted average price (\$/ML)			September 2017 (in \$/ML)						September 2017 Volume	September 2017 # of trades	Broker buy/sell range (\$/ML)
Month of September 2017	September 2017 Quarter	past 12 months	25th percentile	75th percentile	Median	Mean	Mode				
-	-	1 118	-	-	-	-	-	-	-	No listings	

Water entitlement market prices Murray–Darling Basin (September 2017)

## Lachlan: General security

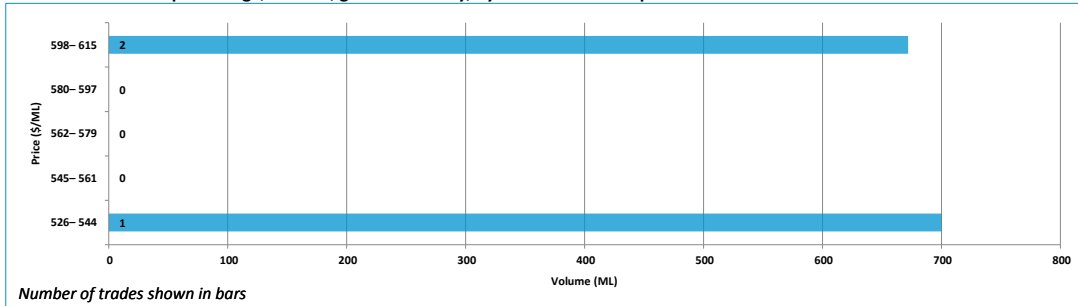
Entitlement market prices and volumes, Lachlan, general security, July 2010 to September 2017



Entitlement market prices and volumes, Lachlan, general security

Volume weighted average price (\$/ML)			September 2017 (in \$/ML)						September 2017 Volume	September 2017 # of trades	Broker buy/sell range (\$/ML)
Month of September 2017	September 2017 Quarter	past 12 months	25th percentile	75th percentile	Median	Mean	Mode				
567	598	563	563	608	600	580	0	1 372	3	600 - 650	

Entitlement market price range, Lachlan, general security, by volume month September 2017



Water entitlement market prices Murray-Darling Basin (September 2017)

## Queensland: Trade Summary

### Entitlement market prices and volumes, Queensland

Resource Operation Plan	Water Supply Scheme / Water Management Area	Type of Entitlement	Volume weighted average price (\$/ML)			August 2017 (in \$/ML)					August 2017 Volume	August 2017 # of trades	Broker buy/sell range (\$/ML)	
			Month of August 2017	August 2017 Quarter	past 12 months	25th percentile	75th percentile	Median	Mean	Mode				
QLD Border Rivers	Border Rivers/ Macintyre Brook	Supplemented	-	1 950	1 507	-	-	-	-	-	-	-	-	1 000 - 2 450
QLD Border Rivers	Border Rivers	Unsupplemented	1 900	1 900	1 875	1 900	1 900	1 900	1 900	0	2 600	1	No listings	
Condamine-Balonne	St. George / Upper Condamine	Supplemented	-	3 000	1 566	-	-	-	-	-	-	-	-	1 800 - 2 000
Condamine-Balonne	Condamine Balonne / Lower Balonne / Upper Condamine	Unsupplemented	1 828	2 388	2 144	1 800	2 150	1 800	2 033	0	2 430	4	700	
Condamine-Balonne	Upper Condamine	Alluvium Groundwater	-	-	-	-	-	-	-	-	-	-	-	No listings
Condamine-Balonne	Lower Balonne	Overland Flow	-	-	-	-	-	-	-	-	-	-	-	No listings

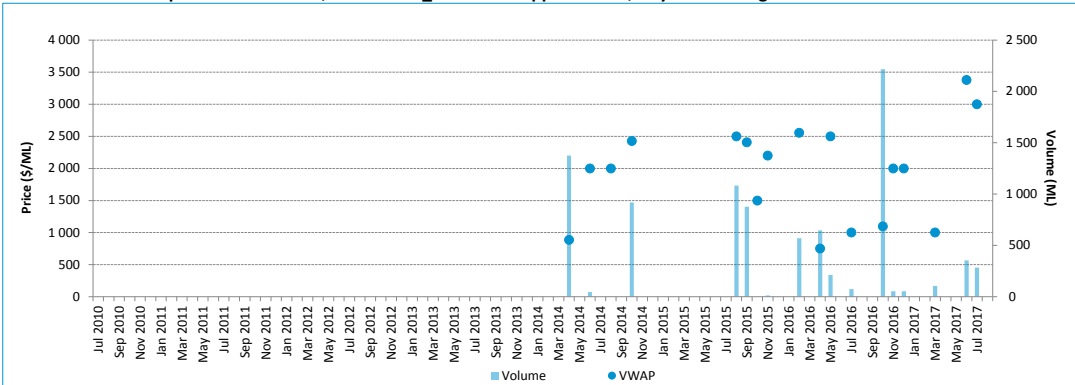
Note: No trades have been reported for Queensland in September 2017. Tables show the monthly trade figures until the end of August.

Water entitlement market prices Murray–Darling Basin (September 2017)

**MARSDEN JACOB ASSOCIATES**

## Condamine Balonne: Supplemented

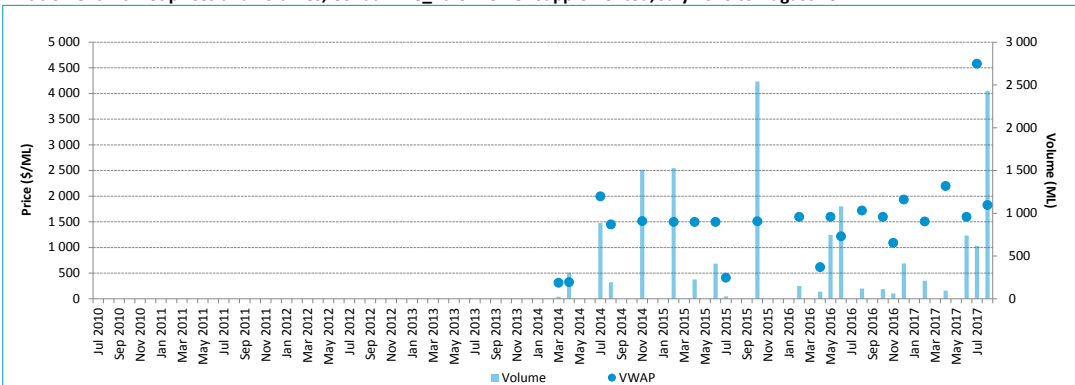
Entitlement market prices and volumes, Condamine\_Balonne - Supplemented, July 2010 to August 2017



Note: No trades have been reported for Queensland in September 2017. Charts show the monthly trade volume and value until the end of August.

## Condamine Balonne: Unsupplemented

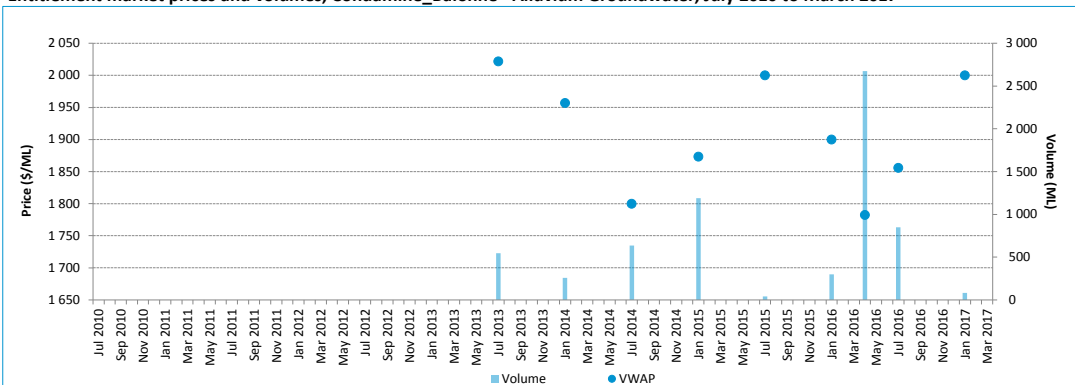
Entitlement market prices and volumes, Condamine\_Balonne - Unsupplemented, July 2010 to August 2017



Note: No trades have been reported for Queensland in September 2017. Charts show the monthly trade volume and value until the end of August.

## Condamine Balonne: Alluvium Groundwater

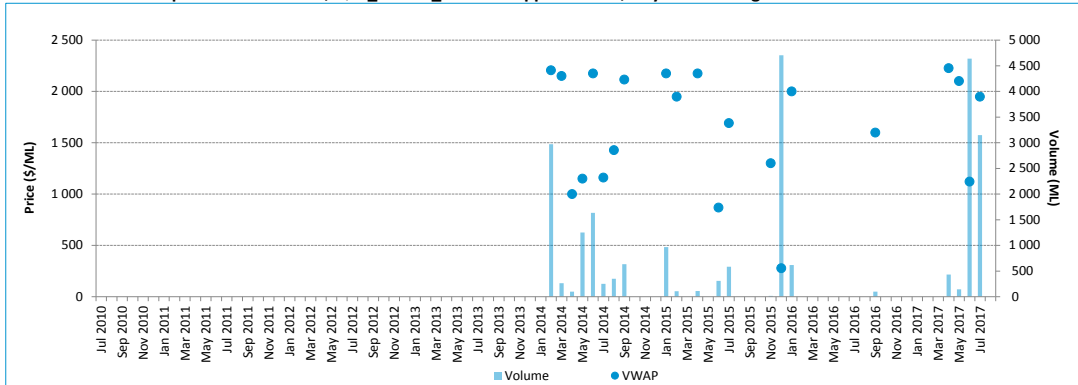
Entitlement market prices and volumes, Condamine\_Balonne - Alluvium Groundwater, July 2010 to March 2017



Note: No trades have been reported for Queensland since March 2017. Charts show the monthly trade volume and value until the end of March.

## QLD Border Rivers: Supplemented

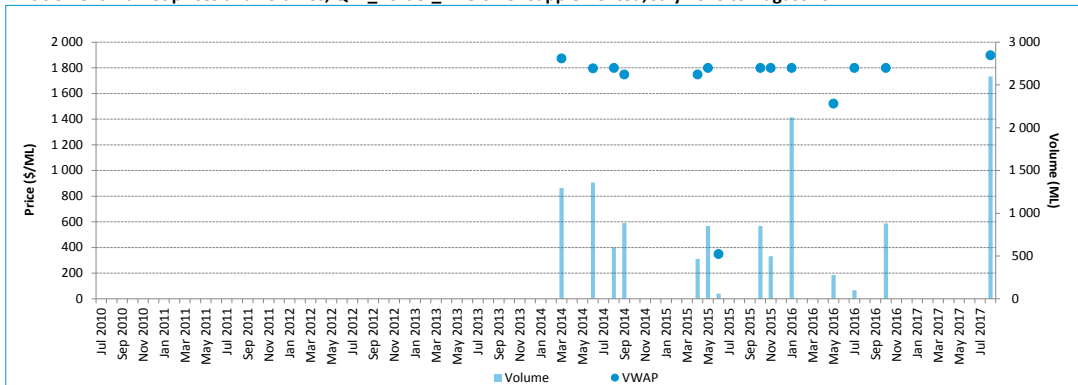
Entitlement market prices and volumes, QLD\_Border\_Rivers - Supplemented, July 2010 to August 2017



Note: No trades have been reported for Queensland in September 2017. Charts show the monthly trade volume and value until the end of August.

## QLD Border Rivers: Unsupplemented

Entitlement market prices and volumes, QLD\_Border\_Rivers - Unsupplemented, July 2010 to August 2017



Note: No trades have been reported for Queensland in September 2017. Charts show the monthly trade volume and value until the end of August.

Water entitlement market prices Murray–Darling Basin (September 2017)

## Appendix A: Regions and water sources

**Table A1 Water sources (southern MDB)**

Region	Water source
SA Murray	River Murray Prescribed Water Course (Class 3a)
Vic. Murray above Barmah Choke	6 Vic. Murray Dart to Barmah
Vic. Murray below Barmah Choke	7 Vic. Murray Barmah to SA 6B Lower Broken Creek
Goulburn	1A Greater Goulburn 1B Boort 3 Lower Goulburn
Campaspe	4A Campaspe Eppalock to WWC 4C Lower Campaspe
Loddon	5A Loddon–Coliban Channel to Lower Weir Pool (now SA Loddon – CC/Tull to LWP) 5B Bullarook
NSW Murray	New South Wales Murray Regulated River Water Source
Murrumbidgee	Murrumbidgee Regulated River Water Source
Lower Darling	Lower Darling Regulated River Water Source

**Table A2 Water sources (northern MDB)**

Region	Water source
Macquarie	Macquarie and Cudgegong Regulated Rivers Water Source
Namoi	Lower Namoi Regulated River Water Source Upper Namoi Regulated River Water Source
Gwydir	Gwydir Regulated River Water Source
NSW Border Rivers	Border Rivers Regulated River Water Source
Barwon–Darling	Barwon–Darling Unregulated River Water Source
Lachlan	Lachlan Regulated River Water Source

## Appendix B: Trades Excluded

Table B1 shows trades that have been excluded from the September 2017 analysis.

**Table B1 Outliers removed from trade data**

Date	Catchment	Product name	Volume (ML)	Price (\$)	Price per ML (\$/ML)
20/09/2017	Campaspe	High Reliability	2	\$ 21	\$ 11
5/09/2017	Goulburn	High Reliability	2	\$ 4 000	\$2 000
7/09/2017	Goulburn	High Reliability	2	\$ 3 000	\$1 500
13/09/2017	Goulburn	High Reliability	15	\$ 29 000	\$2 000
25/09/2017	Lower_Darling	High Security	5	\$ 1	\$ 0
6/09/2017	NSW_Murray	NOT_ALLOC	8	\$ 1	\$ 0
20/09/2017	NSW_Murray_Irrigation	General Security	831	\$ 831 000	\$1 000
1/09/2017	SA_Murray	Class 3a	96	\$ 180 000	\$1 875
28/09/2017	Vic_Murray_AboveBC	High Reliability	164	\$ 171 600	\$1 046
28/09/2017	Vic_Murray_AboveBC	Low Reliability	74	\$ 7 400	\$ 99
5/09/2017	Vic_Murray_BelowBC	High Reliability	7	\$ 1	\$ 0
6/09/2017	Vic_Murray_BelowBC	High Reliability	2	\$ 3 000	\$2 000
21/09/2017	Vic_Murray_BelowBC	High Reliability	2	\$ 3 300	\$1 650
21/09/2017	Vic_Murray_BelowBC	High Reliability	2	\$ 3 000	\$2 000
25/09/2017	Vic_Murray_BelowBC	High Reliability	2	\$ 3 000	\$2 000
25/09/2017	Vic_Murray_BelowBC	High Reliability	3	\$ 5 000	\$2 000
27/09/2017	Vic_Murray_BelowBC	High Reliability	70	\$ 1	\$ 0
27/09/2017	Vic_Murray_BelowBC	High Reliability	2	\$ 3 000	\$2 000