

# Water entitlement market prices

## Murray–Darling Basin

(February 2018)

Prepared for Australian Government Department of Agriculture and Water Resources

**MARSDEN JACOB** ASSOCIATES

Marsden Jacob Associates  
Financial & Economic Consultants  
ABN 66 663 324 657  
ACN 072 233 204  
[Internet: http://www.marsdenjacob.com.au](http://www.marsdenjacob.com.au)  
[E-mail: economists@marsdenjacob.com.au](mailto:economists@marsdenjacob.com.au)

This product has been prepared in accordance with the scope of services described in the contract or agreement between Marsden Jacob Associates Pty Ltd ACN 072 233 204 (MJA) and the Client. Any findings, conclusions or recommendations only apply to the aforementioned circumstances and no greater reliance should be assumed or drawn by the Client. Furthermore, the report has been prepared solely for use by the Client and Marsden Jacob Associates accepts no responsibility for its use by other parties.

Copyright © Marsden Jacob Associates Pty Ltd 2018

## Introduction

This February 2018 monthly water entitlement market prices report has been prepared by Marsden Jacob Associates (Marsden Jacob) for the Australian Government Department of Agriculture and Water Resources.

A water access entitlement is a perpetual or ongoing entitlement to exclusive access to a share of water from a specified consumptive pool, as defined in the relevant water plan.

The report includes:

- southern Murray–Darling Basin (MDB) market activity and price information, by region and entitlement type
- northern MDB market activity and price information, by region and entitlement type
- a list of catchments and water sources
- a list of data outliers removed from the trade data

## Regions, entitlements and key statistics

The entitlement price report is broadly split into the southern and the northern MDB, as detailed in Table 1 and Table 2. Interactive maps showing the location of these trading regions are available on the Murray–Darling Basin Authority's website.

The water sources included in each of the regions are listed in Appendix A.

**Table 1: Regions and entitlement types, southern MDB**

Region	Entitlement type
SA Murray	Class 3a
Vic. Murray above Barmah Choke	High reliability
Vic. Murray above Barmah Choke	Low reliability
Vic. Murray below Barmah Choke	High reliability
Vic. Murray below Barmah Choke	Low reliability
Goulburn	High reliability
Goulburn	Low reliability
Campaspe	High reliability
Loddon	High reliability
NSW Murray	General security
NSW Murray	High security
NSW Murray Irrigation Limited	General security
Murrumbidgee	General security
Murrumbidgee	High security
Lower Darling	General security
Lower Darling	High security

**Table 2: Regions and entitlement types, northern MDB**

Region	Entitlement type
Macquarie	General security
Namoi	General security
Gwydir	General security
NSW Border Rivers	General security
Barwon–Darling	Unregulated
Lachlan	General security
Condamine–Balonne (St George)	Supplemented
Condamine–Balonne (Upper Condamine and Lower Balonne)	Unsupplemented
Central Condamine Alluvium Groundwater (1, 2, 3 and 4)	Groundwater (sub areas 1, 2, 3 and 4)
Upper Condamine Alluvium Groundwater (Dalrymple Creek)	Groundwater
Upper Condamine Alluvium Groundwater (Oakey Creek)	Groundwater
Qld Border Rivers	Supplemented
Qld Border Rivers	Unsupplemented
Lower Balonne	Overland flow

As requested by the department, for each of the regions and water entitlement categories Marsden Jacob reports a range of measures, subject to data availability and the number of trades:

- volume weighted average price (VWAP)
- median price
- mean price
- mode price
- 25th and 75th percentile prices
- price quintiles
- trade volume
- number of trades
- water trading exchange prices.

## Data sources

The data sources for this report are:

- National Water Market Register data, up to 31 December 2013
- state government water registers and websites

- water exchange and broker noticeboard prices.

## Notes

Entitlement prices in the state government water registers can lag the exchange date of contracts or water sale agreements by periods of days to several months. This means the entitlement prices shown in the monthly and quarterly VWAPs may not reflect all exchanges during the month.

Entitlement prices that do not appear to reflect arm's-length transactions have been excluded in the data cleaning process (see Appendix B).

Removing these values reduces price distortions in the reporting. This means prices in this report may differ from prices shown in registers where these transactions have not been removed.

Marsden Jacob uses a two-stage process to clean the data:

1. Removing prices that may not be genuine; for example, removing transactions where the price was reported to be null (\$0 per ML)
2. Reviewing and potentially removing transactions outside two standard deviations from the average price of water entitlements by region (or trading zone) and by water product.

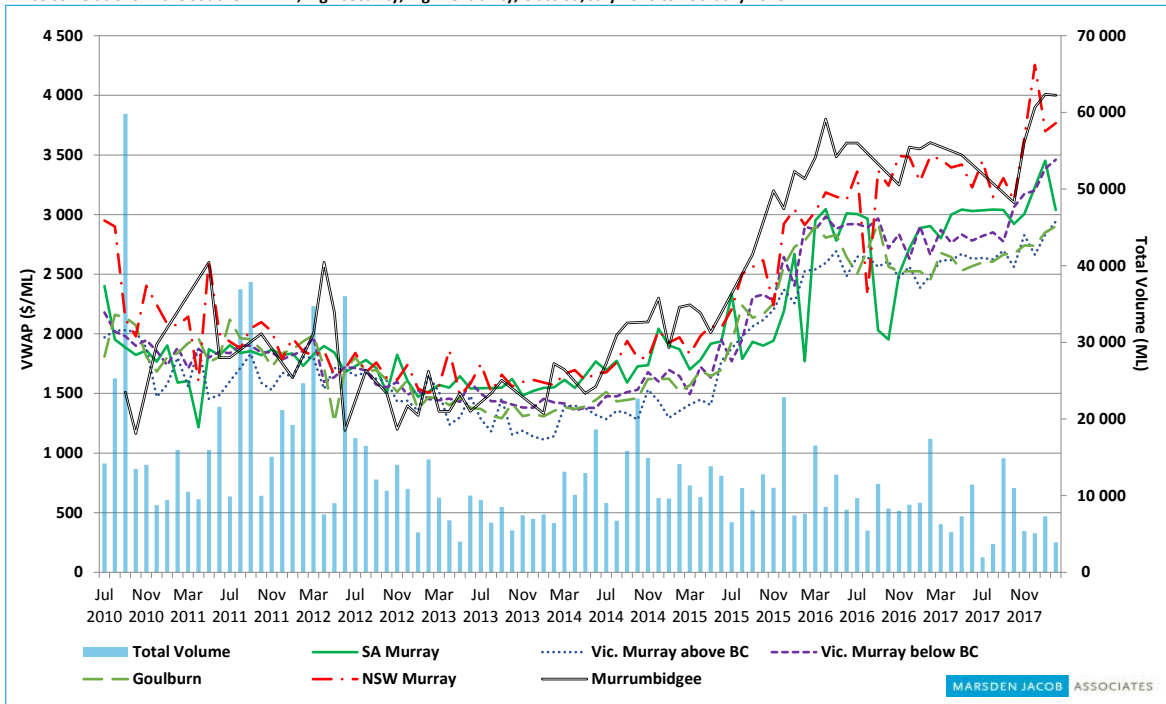
Marsden Jacob does not necessarily remove all trades that fall outside two standard deviations, as some of them reflect arm's-length trades. If trades that fall outside two standard deviations are retained in the regional dataset, this is noted in the region and entitlement-specific reports. Also, trades that fall within two standard deviations but are removed because they are not considered representative on the basis of recent data trends are also noted in the region and entitlement-specific reports as well as Appendix B.

Water entitlement market prices Murray–Darling Basin (February 2018)

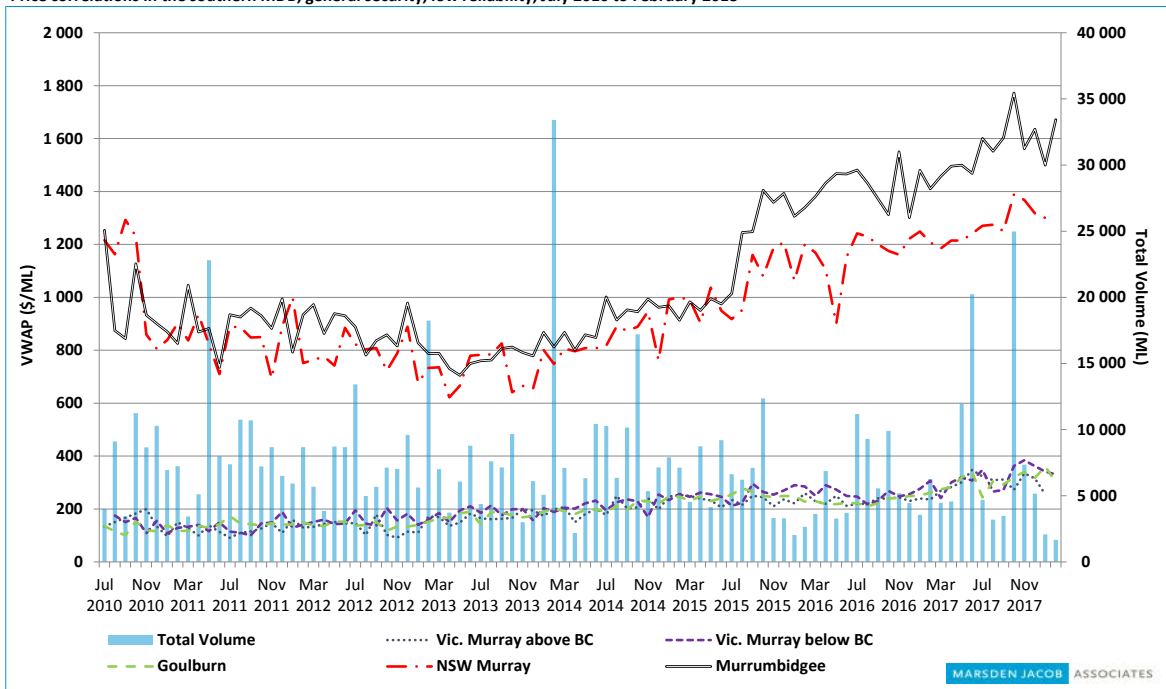
**MARSDEN JACOB** ASSOCIATES

## Southern Murray–Darling Basin

Price correlations in the southern MDB, high security, high reliability, Class 3a, July 2010 to February 2018



Price correlations in the southern MDB, general security, low reliability, July 2010 to February 2018

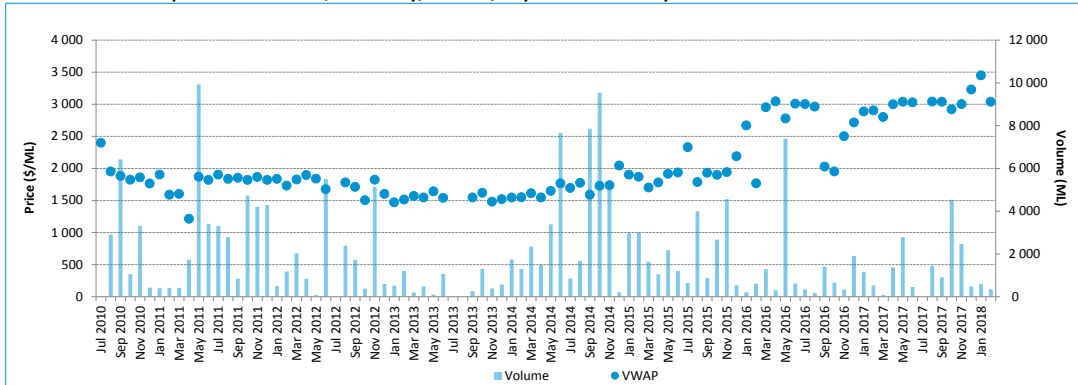


Source: Marsden Jacob analysis, 2018.

Water entitlement market prices Murray–Darling Basin (February 2018)

## Southern Australian Murray: Class 3a

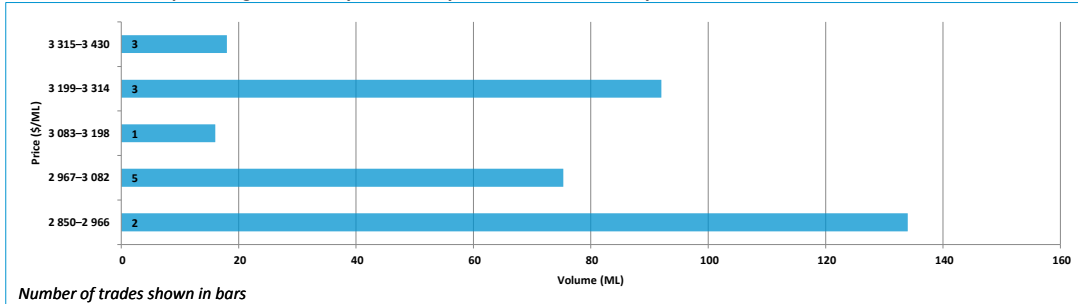
Entitlement market prices and volumes, SA Murray, Class 3a, July 2010 to February 2018



Entitlement market prices and volumes, SA Murray, Class 3a

Volume weighted average price (\$/ML)			February 2018 (in \$/ML)					February 2018	February 2018	Broker buy/sell
Month of	February 2018	past 12	25th percentile	75th percentile	Median	Mean	Mode	Volume	# of trades	range (\$/ML)
February 2018	Quarter	months								
3 039	3 279	3 017	3 008	3 260	3 051	3 131	3 008	335	14	3 000 - 3 513

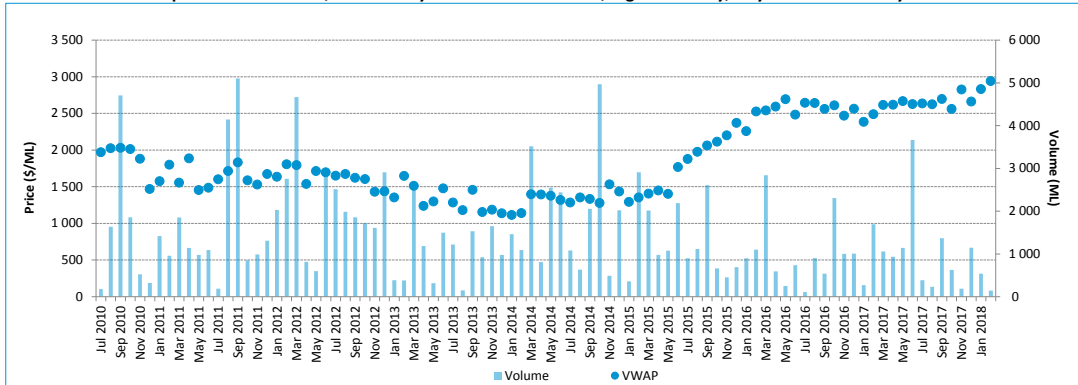
Entitlement market price range, SA Murray, Class 3a, by volume month February 2018



Water entitlement market prices Murray-Darling Basin (February 2018)

## Victorian Murray above Barmah Choke: high reliability

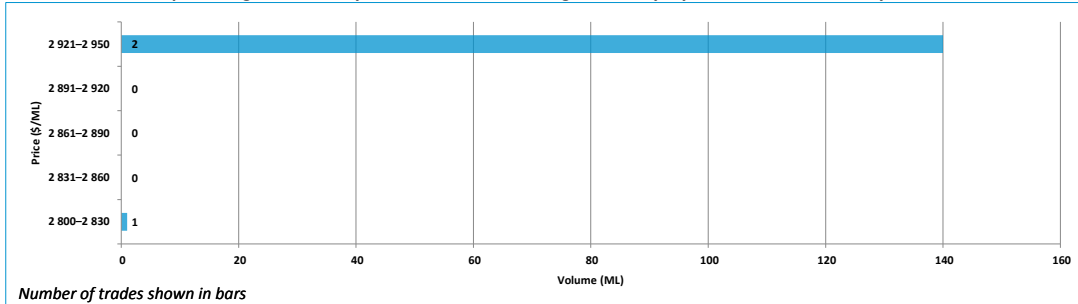
Entitlement market prices and volumes, Vic. Murray above Barmah Choke, high reliability, July 2010 to February 2018



Entitlement market prices and volumes, Vic. Murray above Barmah Choke, high reliability

Volume weighted average price (\$/ML)			February 2018 (in \$/ML)					February 2018	February 2018	Broker buy/sell
Month of February 2018	February 2018 Quarter	past 12 months	25th percentile	75th percentile	Median	Mean	Mode	Volume	# of trades	range (\$/ML)
2.942	2.734	2.656	2.863	2.938	2.925	2.892	0	141	3	2.400 - 3.100

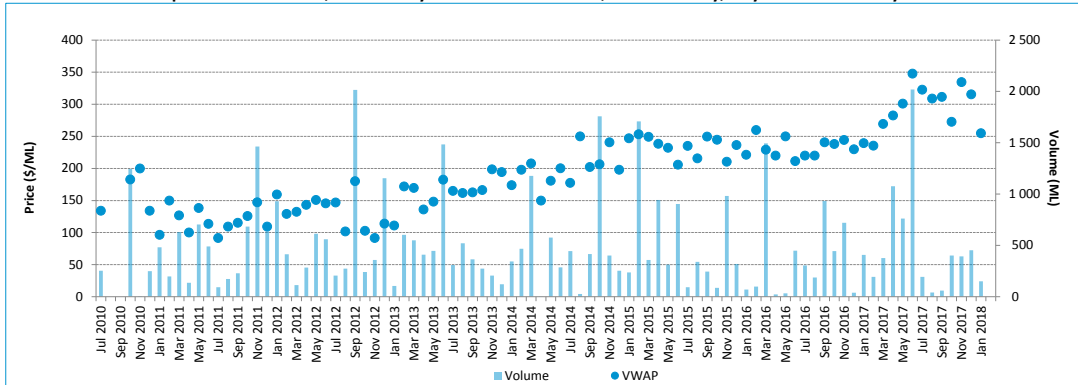
Entitlement market price range, Vic. Murray above Barmah Choke, high reliability, by volume month February 2018



Water entitlement market prices Murray–Darling Basin (February 2018)

## Victorian Murray above Barmah Choke: low reliability

Entitlement market prices and volumes, Vic. Murray above Barmah Choke, low reliability, July 2010 to February 2018



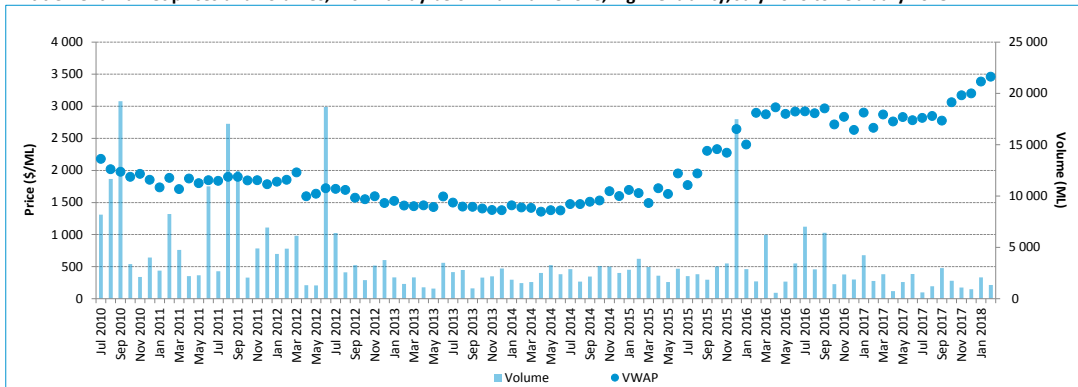
Entitlement market prices and volumes, Vic. Murray above Barmah Choke, low reliability

Volume weighted average price (\$/ML)			February 2018 (in \$/ML)					February 2018	February 2018	Broker buy/sell
Month of	February 2018	past 12	25th percentile	75th percentile	Median	Mean	Mode	Volume	# of trades	range (\$/ML)
February 2018	Quarter	months								
-	300	313	-	-	-	-	-	0	0	260 - 400

Water entitlement market prices Murray–Darling Basin (February 2018)

## Victorian Murray below Barmah Choke: high reliability

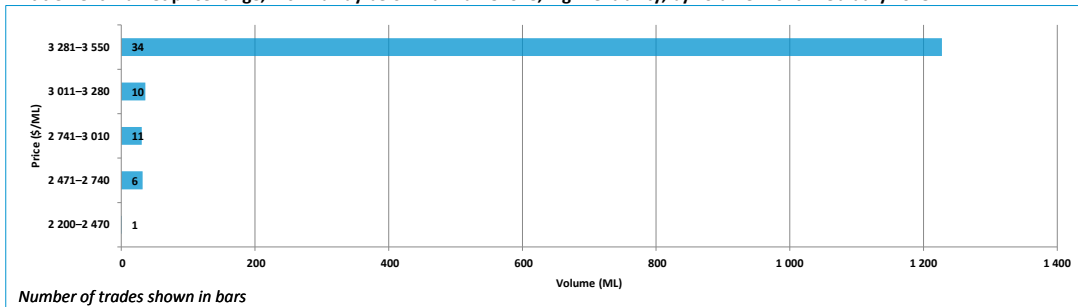
Entitlement market prices and volumes, Vic. Murray below Barmah Choke, high reliability, July 2010 to February 2018



Entitlement market prices and volumes, Vic. Murray below Barmah Choke, high reliability

Volume weighted average price (\$/ML)			February 2018 (in \$/ML)					February 2018	February 2018	Broker buy/sell	
Month of	February 2018	past 12	25th percentile	75th percentile	Median	Mean	Mode	Volume	# of trades	range (\$/ML)	
February 2018	Quarter	months									
	3 460	3 370	2 982	3 000	3 500	3 361	3 216	3 500	1 327	62	2 600 - 3 900

Entitlement market price range, Vic. Murray below Barmah Choke, high reliability, by volume month February 2018

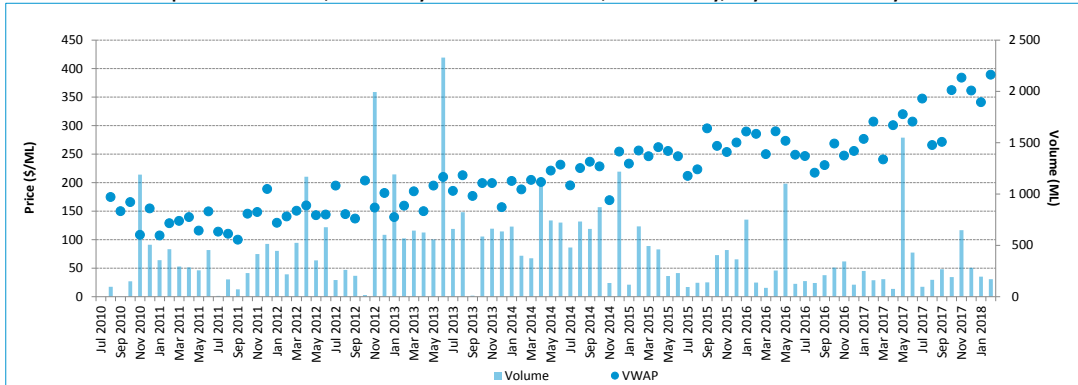


Water entitlement market prices Murray-Darling Basin (February 2018)



## Victorian Murray below Barmah Choke: low reliability

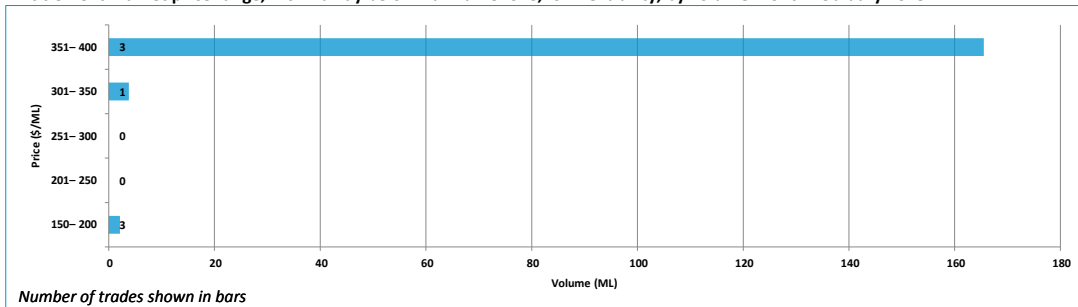
Entitlement market prices and volumes, Vic. Murray below Barmah Choke, low reliability, July 2010 to February 2018



Entitlement market prices and volumes, Vic. Murray below Barmah Choke, low reliability

Volume weighted average price (\$/ML)			February 2018 (in \$/ML)					February 2018	February 2018	Broker buy/sell	
Month of	February 2018	past 12	25th percentile	75th percentile	Median	Mean	Mode	Volume	# of trades	range (\$/ML)	
February 2018	Quarter	months									
	389	363	329	150	380	350	280	150	171	7	300 - 556

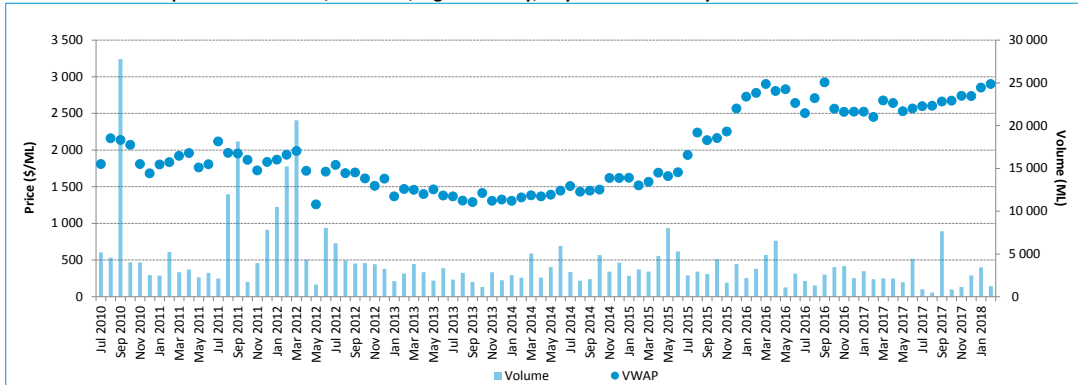
Entitlement market price range, Vic. Murray below Barmah Choke, low reliability, by volume month February 2018



Water entitlement market prices Murray-Darling Basin (February 2018)

## Goulburn: high reliability

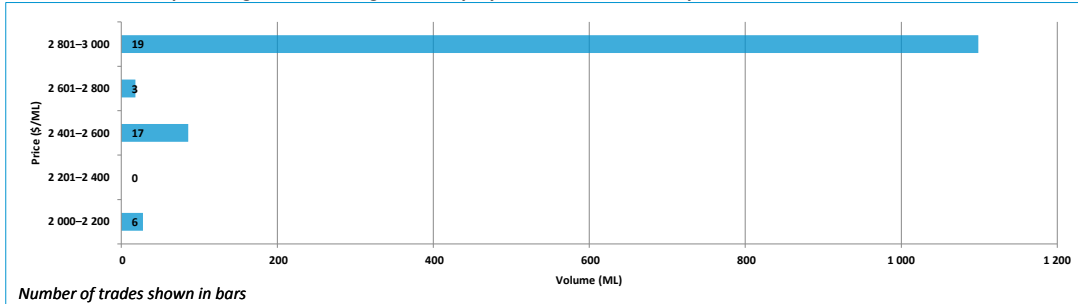
Entitlement market prices and volumes, Goulburn, high reliability, July 2010 to February 2018



Entitlement market prices and volumes, Goulburn, high reliability

Volume weighted average price (\$/ML)			February 2018 (in \$/ML)					February 2018	February 2018	Broker buy/sell
Month of	February 2018	past 12	25th percentile	75th percentile	Median	Mean	Mode	Volume	# of trades	range (\$/ML)
February 2018	Quarter	months								
2 901	2 821	2 680	2 500	2 940	2 600	2 650	2 500	1 230	45	2 350 - 3 100

Entitlement market price range, Goulburn, high reliability, by volume month February 2018

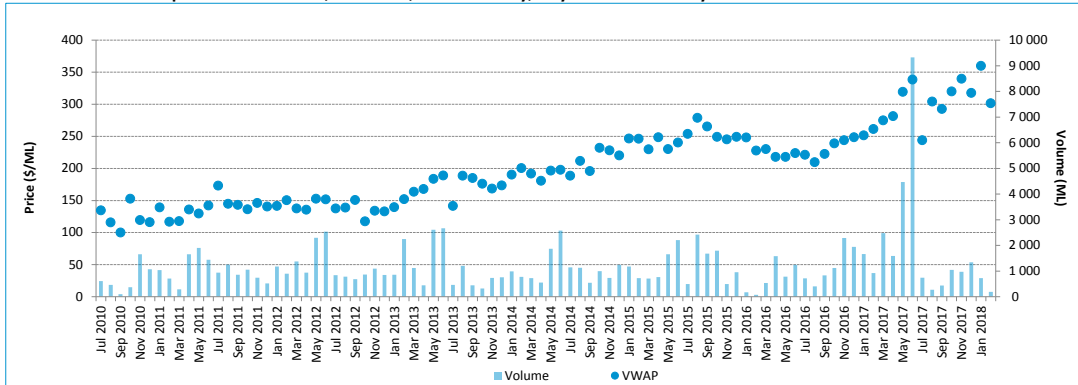


Number of trades shown in bars

Water entitlement market prices Murray–Darling Basin (February 2018)

## Goulburn: low reliability

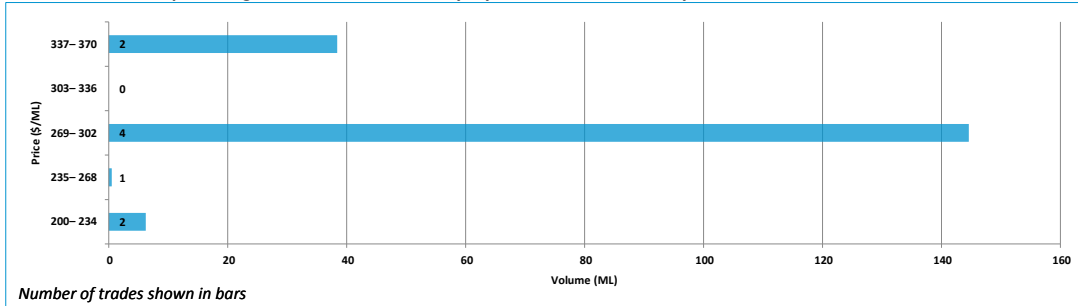
Entitlement market prices and volumes, Goulburn, low reliability, July 2010 to February 2018



Entitlement market prices and volumes, Goulburn, low reliability

Volume weighted average price (\$/ML)			February 2018 (in \$/ML)					February 2018	February 2018	Broker buy/sell
Month of	February 2018	past 12	25th percentile	75th percentile	Median	Mean	Mode	Volume	# of trades	range (\$/ML)
February 2018	Quarter	months								
302	330	319	240	300	300	282	300	190	9	250 - 407

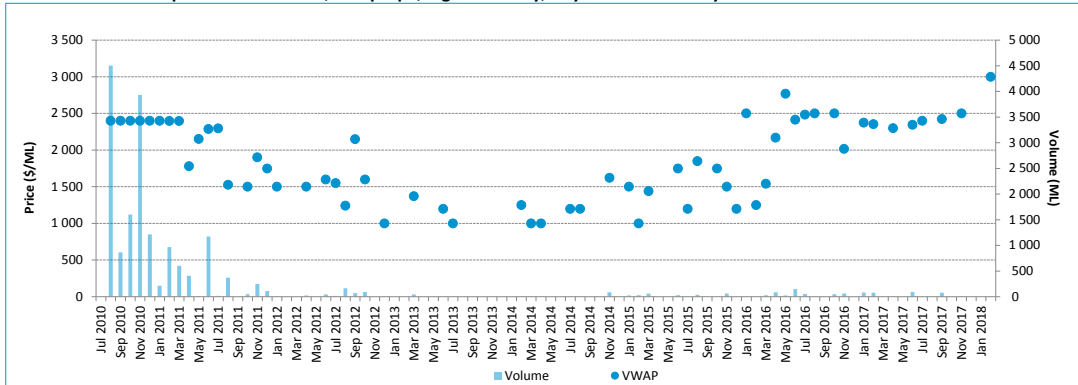
Entitlement market price range, Goulburn, low reliability, by volume month February 2018



Water entitlement market prices Murray-Darling Basin (February 2018)

## Campaspe: high reliability

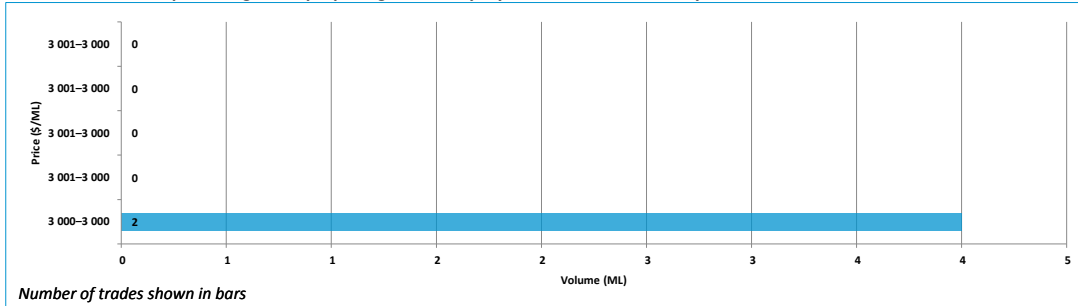
Entitlement market prices and volumes, Campaspe, high reliability, July 2010 to February 2018



Entitlement market prices and volumes, Campaspe, high reliability

Volume weighted average price (\$/ML)			February 2018 (in \$/ML)					February 2018	February 2018	Broker buy/sell
Month of	February 2018	past 12	25th percentile	75th percentile	Median	Mean	Mode	Volume	# of trades	range (\$/ML)
February 2018	Quarter	months								
3 000	3 000	2 398	3 000	3 000	3 000	3 000	3 000	4	2	No listings

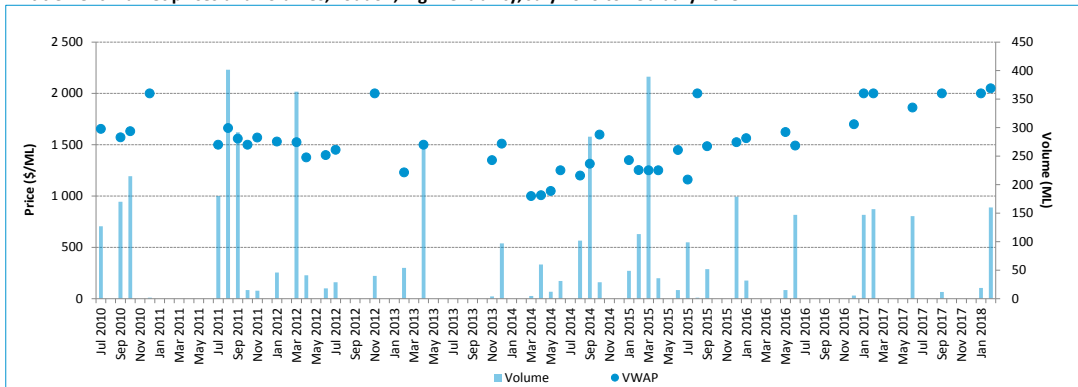
Entitlement market price range, Campaspe, high reliability, by volume month February 2018



Water entitlement market prices Murray–Darling Basin (February 2018)

## Loddon: high reliability

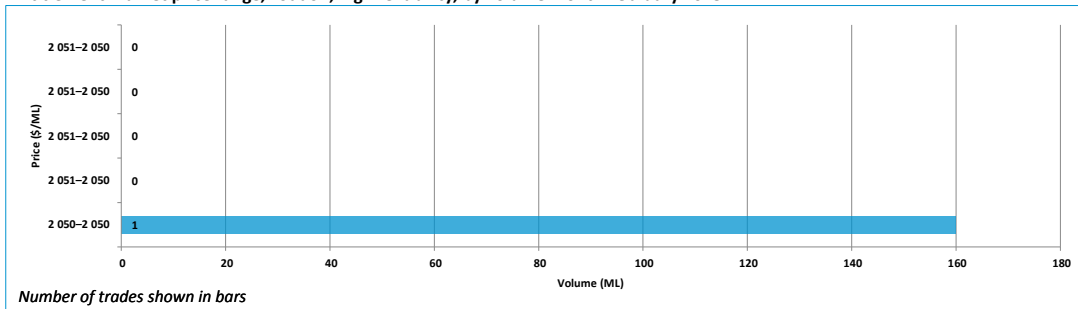
Entitlement market prices and volumes, Loddon, high reliability, July 2010 to February 2018



Entitlement market prices and volumes, Loddon, high reliability

Volume weighted average price (\$/ML)			February 2018 (in \$/ML)					February 2018	February 2018	Broker buy/sell
Month of February 2018	February 2018 Quarter	past 12 months	25th percentile	75th percentile	Median	Mean	Mode	Volume	# of trades	range (\$/ML)
2 050	2 045	1 964	2 050	2 050	2 050	2 050	0	160	1	No listings

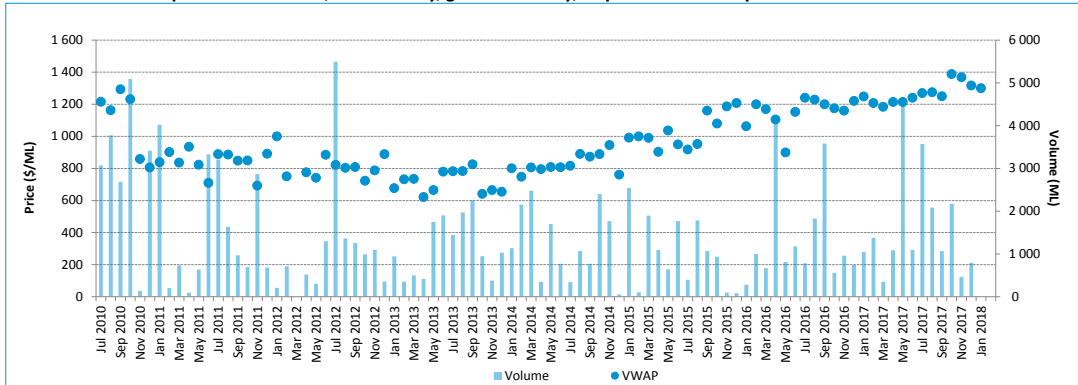
Entitlement market price range, Loddon, high reliability, by volume month February 2018



Water entitlement market prices Murray–Darling Basin (February 2018)

## New South Wales Murray: general security

Entitlement market prices and volumes, NSW Murray, general security, July 2010 to February 2018



Entitlement market prices and volumes, NSW Murray, general security

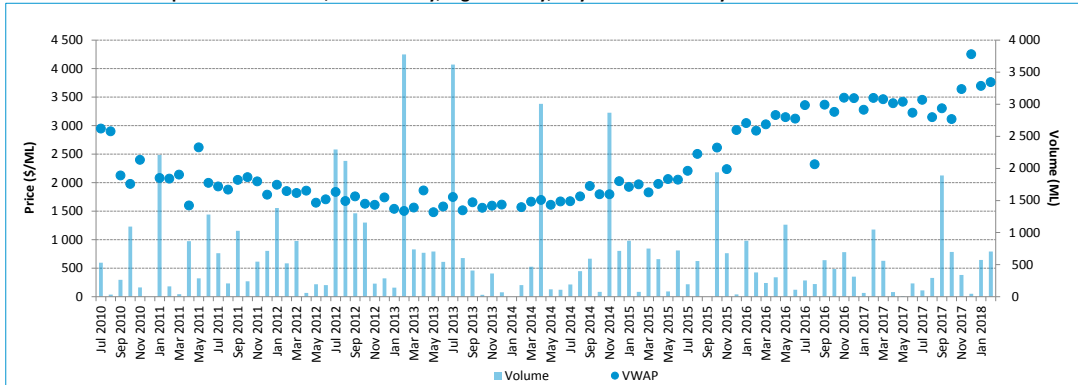
Volume weighted average price (\$/ML)			February 2018 (in \$/ML)					February 2018	February 2018	Broker buy/sell
Month of	February 2018	past 12	25th percentile	75th percentile	Median	Mean	Mode	Volume	# of trades	range (\$/ML)
February 2018	Quarter	months								
-	1 318	1 268	-	-	-	-	-	-	-	1 300 - 1 580

Water entitlement market prices Murray–Darling Basin (February 2018)

**MARSDEN JACOB ASSOCIATES**

## New South Wales Murray: high security

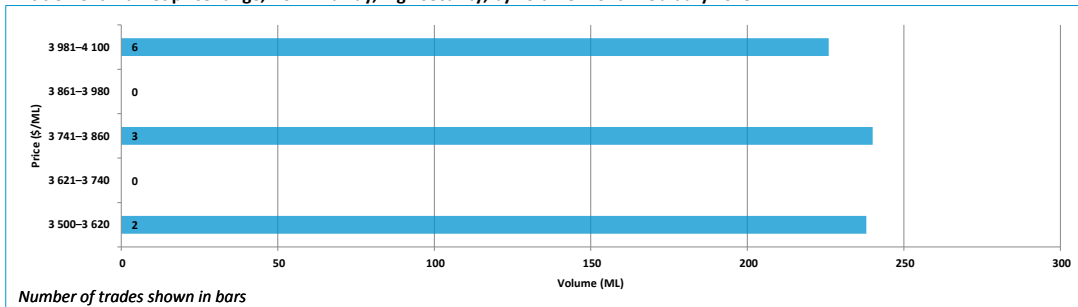
Entitlement market prices and volumes, NSW Murray, high security, July 2010 to February 2018



Entitlement market prices and volumes, NSW Murray, high security

Volume weighted average price (\$/ML)			February 2018 (in \$/ML)					February 2018	February 2018	Broker buy/sell
Month of February 2018	February 2018 Quarter	past 12 months	25th percentile	75th percentile	Median	Mean	Mode	Volume	# of trades	range (\$/ML)
3 766	3 754	3 420	3 800	4 000	4 000	3 864	4 000	704	11	3 500 - 4 150

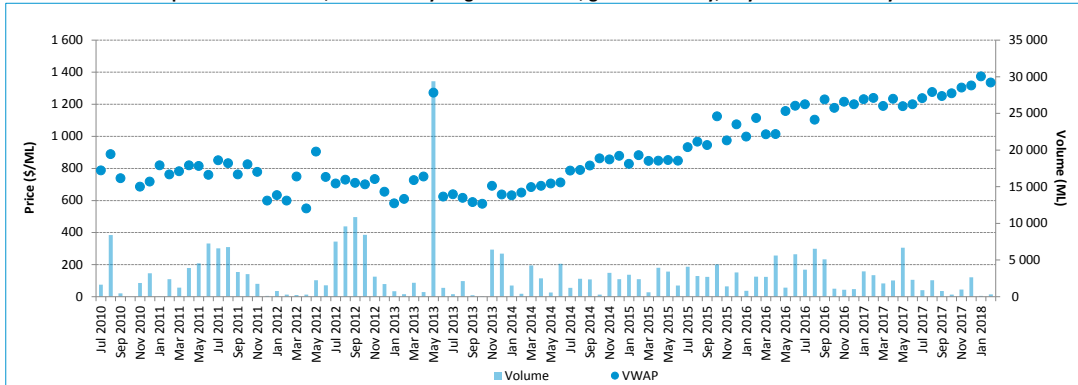
Entitlement market price range, NSW Murray, high security, by volume month February 2018



Water entitlement market prices Murray–Darling Basin (February 2018)

# New South Wales Murray Irrigation Limited

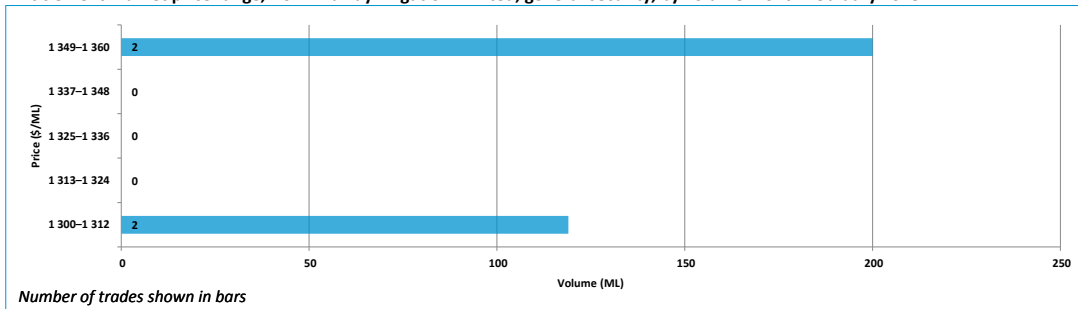
Entitlement market prices and volumes, NSW Murray Irrigation Limited, general security, July 2010 to February 2018



Entitlement market prices and volumes, NSW Murray Irrigation Limited, general security

Volume weighted average price (\$/ML)			February 2018 (in \$/ML)					February 2018	February 2018	Broker buy/sell
Month of February 2018	February 2018 Quarter	past 12 months	25th percentile	75th percentile	Median	Mean	Mode	Volume	# of trades	range (\$/ML)
1 336	1 321	1 234	1 300	1 353	1 325	1 328	1 300	319	4	1 250 - 1 500

Entitlement market price range, NSW Murray Irrigation Limited, general security, by volume month February 2018



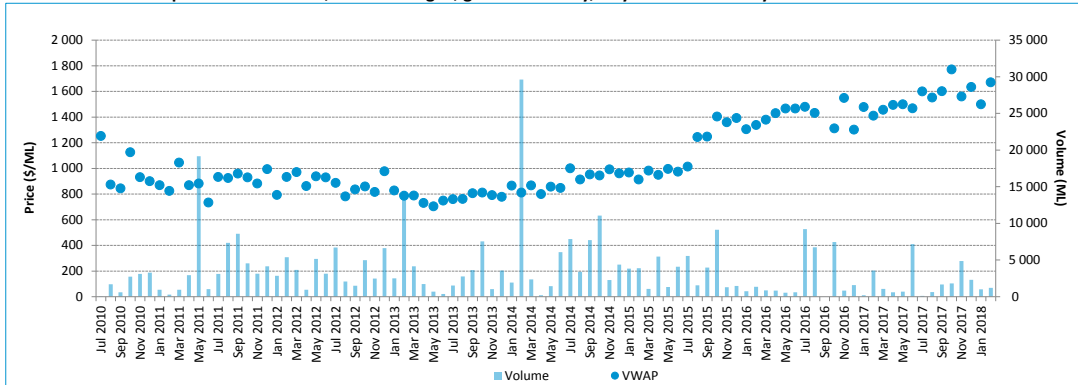
Water entitlement market prices Murray–Darling Basin (February 2018)





## Murrumbidgee: general security

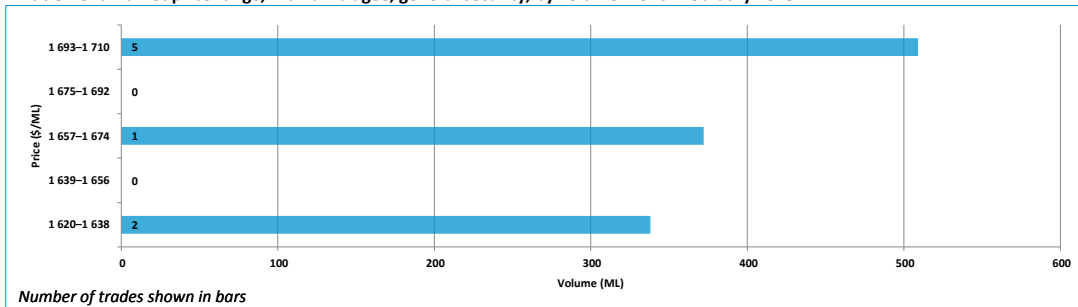
Entitlement market prices and volumes, Murrumbidgee, general security, July 2010 to February 2018



Entitlement market prices and volumes, Murrumbidgee, general security

Volume weighted average price (\$/ML)			February 2018 (in \$/ML)					February 2018	February 2018	Broker buy/sell
Month of February 2018	February 2018 Quarter	past 12 months	25th percentile	75th percentile	Median	Mean	Mode	Volume	# of trades	range (\$/ML)
1 671	1 615	1 554	1 658	1 703	1 700	1 679	1 700	1 219	8	1 550 - 2 250

Entitlement market price range, Murrumbidgee, general security, by volume month February 2018

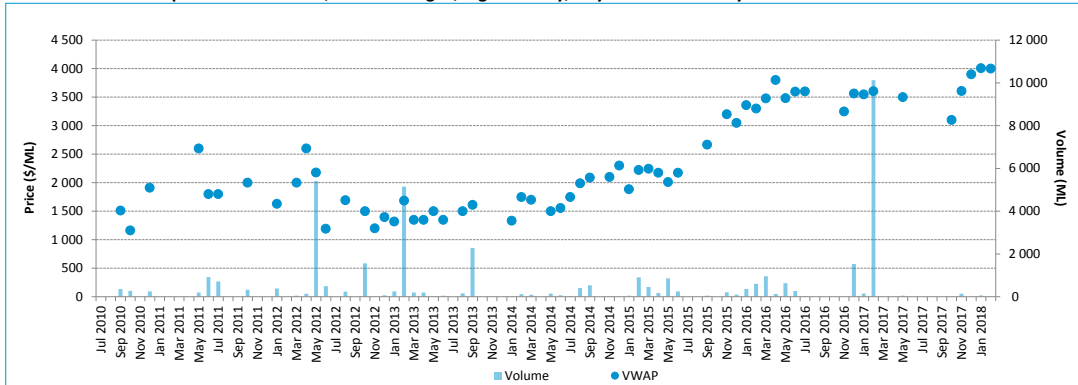


Number of trades shown in bars

Water entitlement market prices Murray–Darling Basin (February 2018)

## Murrumbidgee: high security

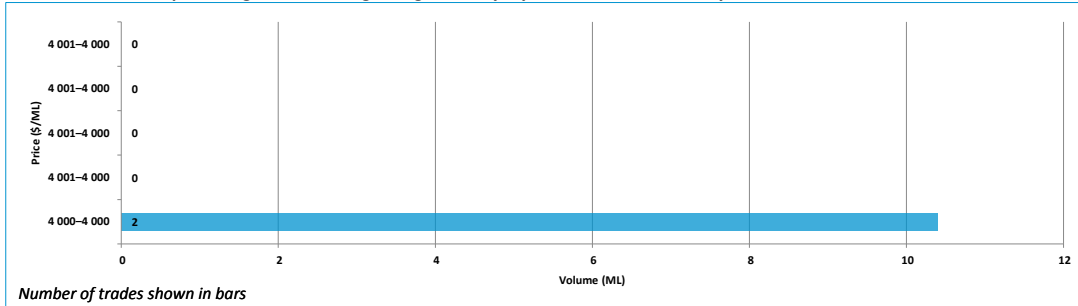
Entitlement market prices and volumes, Murrumbidgee, high security, July 2010 to February 2018



Entitlement market prices and volumes, Murrumbidgee, high security

Volume weighted average price (\$/ML)			February 2018 (in \$/ML)					February 2018	February 2018	Broker buy/sell
Month of February 2018	February 2018 Quarter	past 12 months	25th percentile	75th percentile	Median	Mean	Mode	Volume	# of trades	range (\$/ML)
February 2018	3 999	3 697	4 000	4 000	4 000	4 000	4 000	10	2	3 600 - 5 000

Entitlement market price range, Murrumbidgee, high security, by volume month February 2018

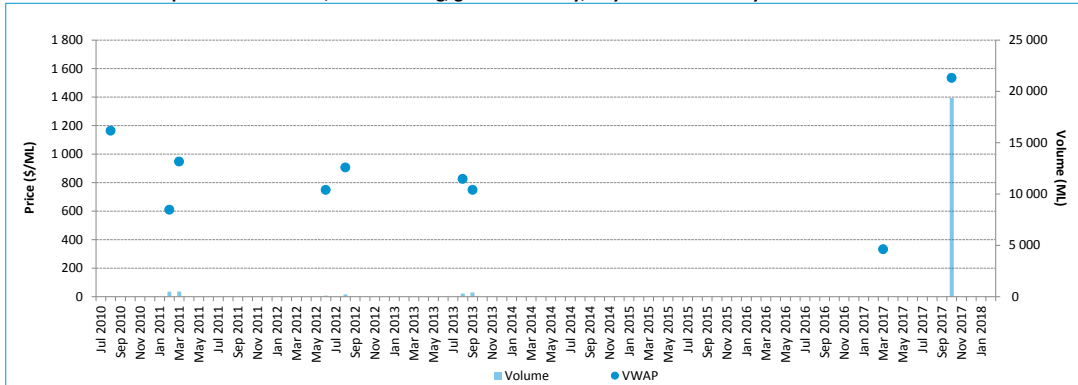


Number of trades shown in bars

Water entitlement market prices Murray–Darling Basin (February 2018)

## Lower Darling: general security

Entitlement market prices and volumes, Lower Darling, general security, July 2010 to February 2018



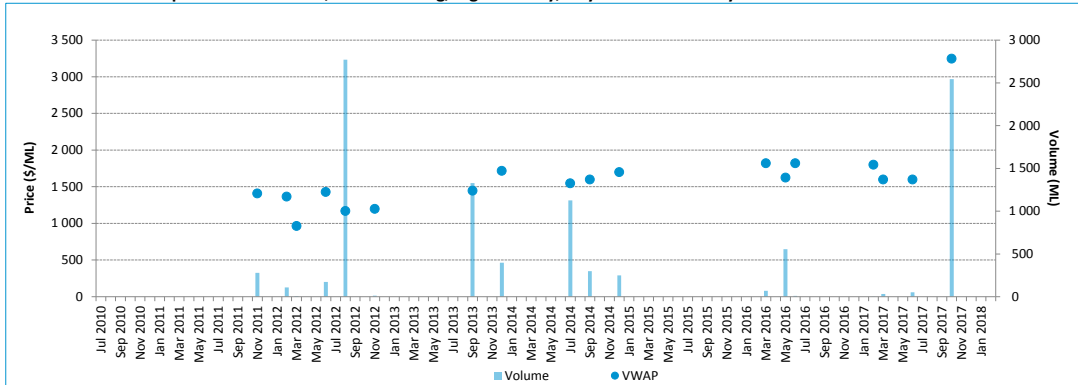
Entitlement market prices and volumes, Lower Darling, general security

Volume weighted average price (\$/ML)			February 2018 (in \$/ML)					February 2018	February 2018	Broker buy/sell
Month of	February 2018	past 12	25th percentile	75th percentile	Median	Mean	Mode	Volume	# of trades	range (\$/ML)
February 2018	Quarter	months								
-	-	1 536	-	-	-	-	-	-	-	No listings

Water entitlement market prices Murray–Darling Basin (February 2018)

## Lower Darling: high security

Entitlement market prices and volumes, Lower Darling, high security, July 2010 to February 2018



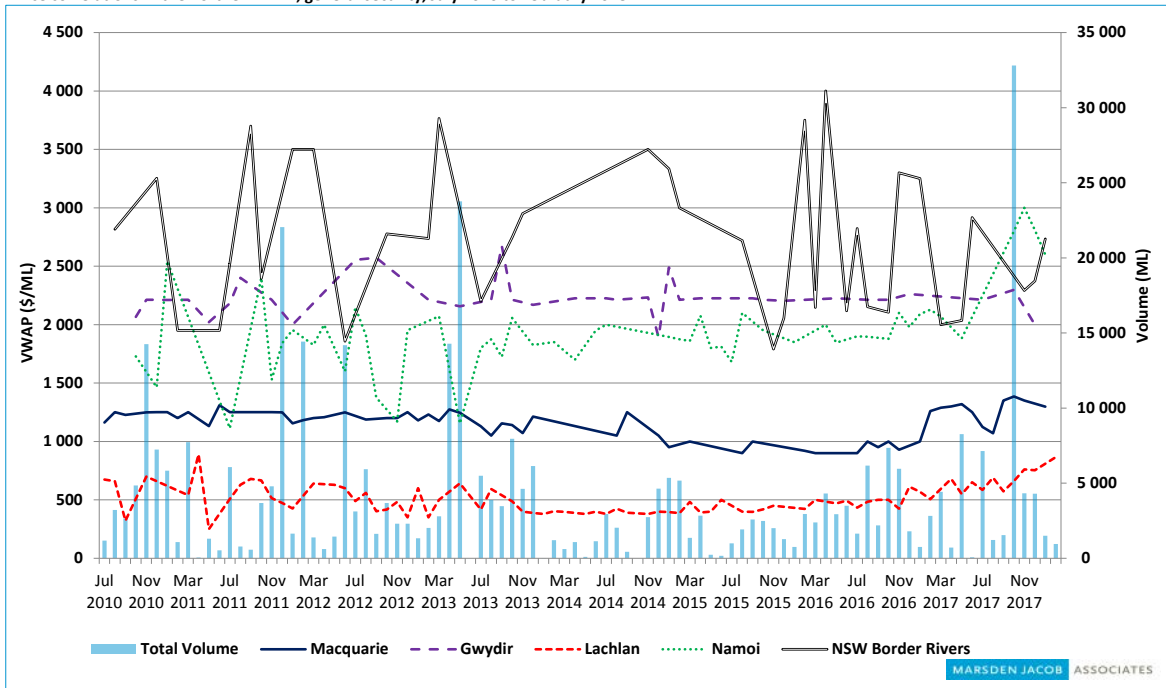
Entitlement market prices and volumes, Lower Darling, high security

Volume weighted average price (\$/ML)			February 2018 (in \$/ML)					February 2018	February 2018	Broker buy/sell
Month of	February 2018	past 12	25th percentile	75th percentile	Median	Mean	Mode	Volume	# of trades	range (\$/ML)
February 2018	Quarter	months								
-	-	3 196	-	-	-	-	-	-	-	No listings

Water entitlement market prices Murray–Darling Basin (February 2018)

## Northern Murray–Darling Basin

Price correlations in the northern MDB, general security, July 2010 to February 2018



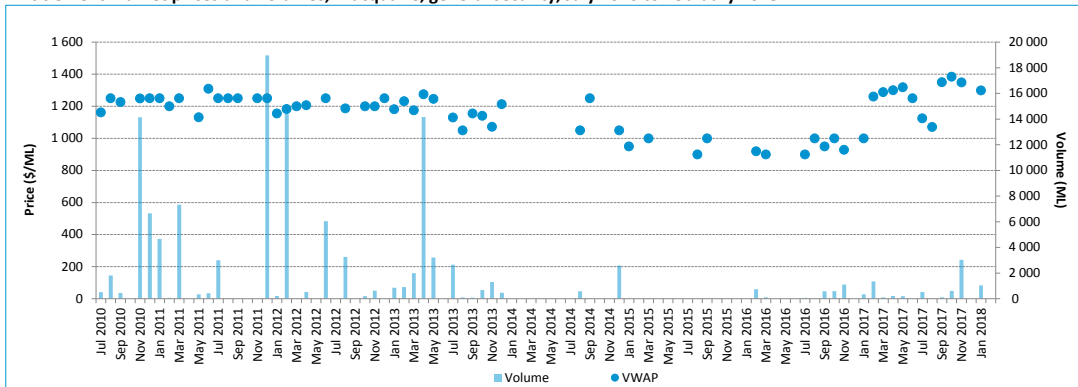
Source: Marsden Jacob analysis, 2018.

Water entitlement market prices Murray–Darling Basin (February 2018)

**MARSDEN JACOB ASSOCIATES**

## Macquarie: general security

Entitlement market prices and volumes, Macquarie, general security, July 2010 to February 2018



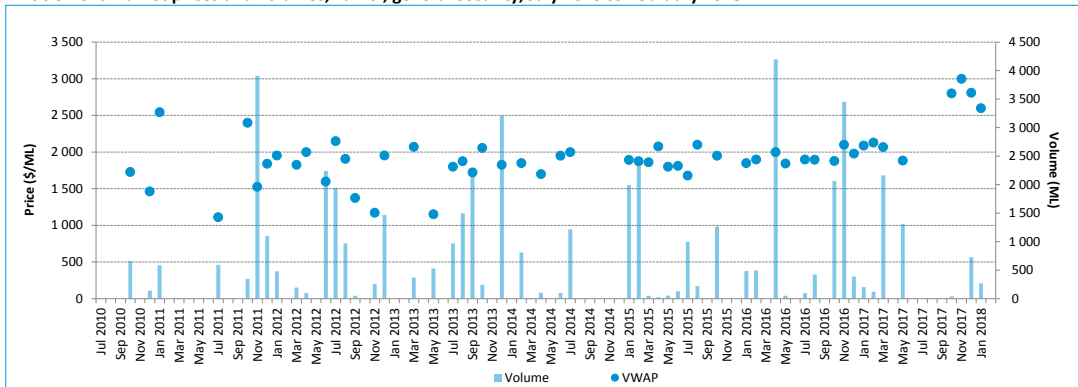
Entitlement market prices and volumes, Macquarie, general security

Volume weighted average price (\$/ML)			February 2018 (in \$/ML)					February 2018	February 2018	Broker buy/sell
Month of	February 2018	past 12	25th percentile	75th percentile	Median	Mean	Mode	Volume	# of trades	range (\$/ML)
February 2018	Quarter	months								
-	1 299	1 319	-	-	-	-	-	-	-	1 100 - 1 400

Water entitlement market prices Murray-Darling Basin (February 2018)

## Namoi: general security

Entitlement market prices and volumes, Namoi, general security, July 2010 to February 2018



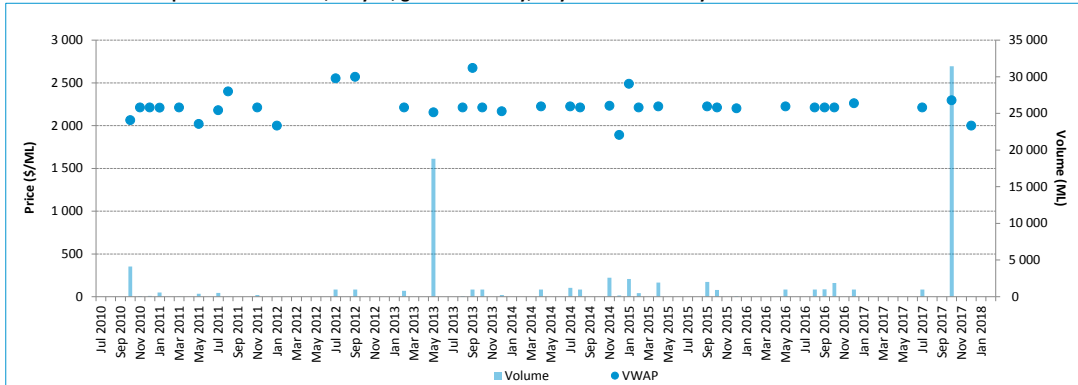
Entitlement market prices and volumes, Namoi, general security

Volume weighted average price (\$/ML)			February 2018 (in \$/ML)					February 2018	February 2018	Broker buy/sell
Month of	February 2018	past 12	25th percentile	75th percentile	Median	Mean	Mode	Volume	# of trades	range (\$/ML)
February 2018	Quarter	months								
-	2.752	2.175	-	-	-	-	-	-	-	1 850 - 2 500

Water entitlement market prices Murray–Darling Basin (February 2018)

## Gwydir: general security

Entitlement market prices and volumes, Gwydir, general security, July 2010 to February 2018



Entitlement market prices and volumes, Gwydir, general security

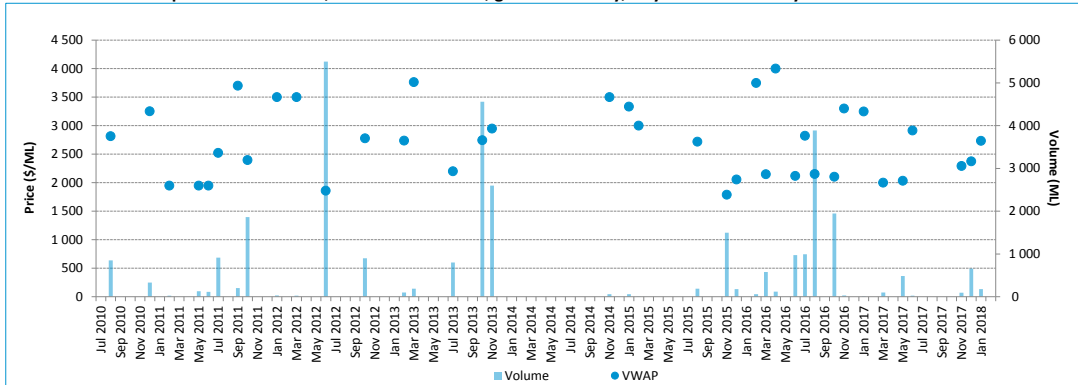
Volume weighted average price (\$/ML)			February 2018 (in \$/ML)					February 2018	February 2018	Broker buy/sell
Month of	February 2018	past 12	25th percentile	75th percentile	Median	Mean	Mode	Volume	# of trades	range (\$/ML)
February 2018	Quarter	months								
-	2 000	2 295	-	-	-	-	-	-	-	No listings

Water entitlement market prices Murray–Darling Basin (February 2018)



## New South Wales Border Rivers: general security

Entitlement market prices and volumes, NSW Border Rivers, general security, July 2010 to February 2018



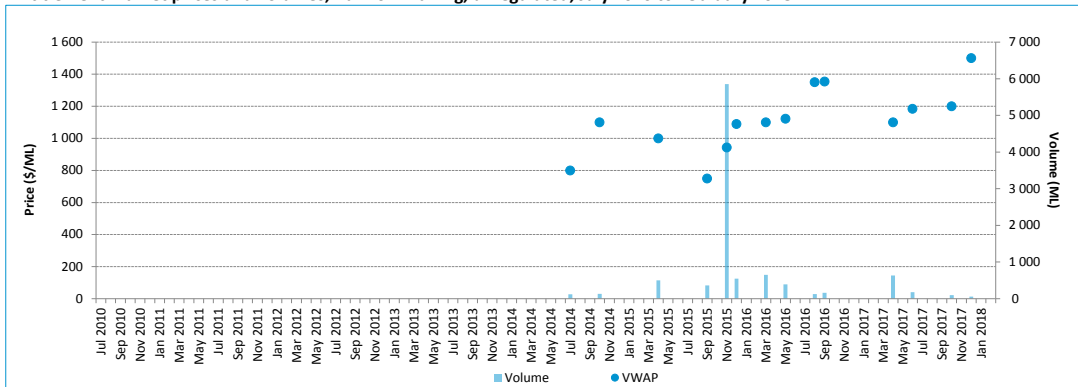
Entitlement market prices and volumes, NSW Border Rivers, general security

Volume weighted average price (\$/ML)			February 2018 (in \$/ML)					February 2018	February 2018	Broker buy/sell
Month of	February 2018	past 12	25th percentile	75th percentile	Median	Mean	Mode	Volume	# of trades	range (\$/ML)
February 2018	Quarter	months								
-	2 451	2 288	-	-	-	-	-	-	-	3 700

Water entitlement market prices Murray–Darling Basin (February 2018)

## Barwon–Darling: unregulated

Entitlement market prices and volumes, Barwon–Darling, unregulated, July 2010 to February 2018



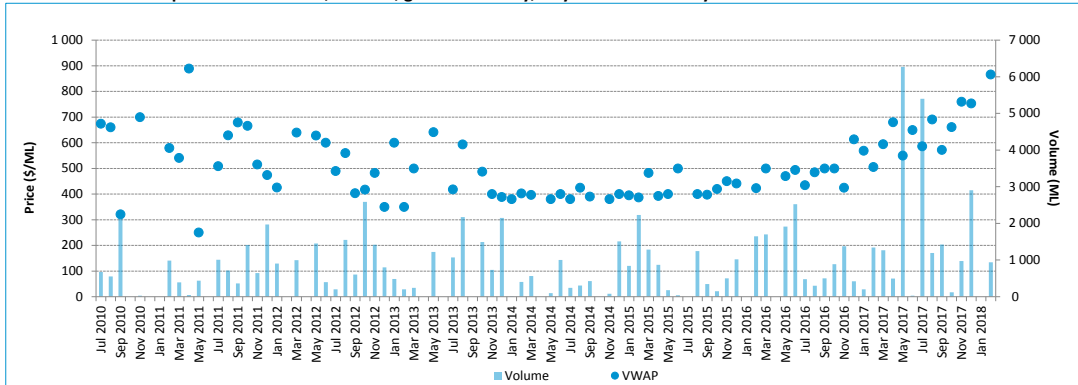
Entitlement market prices and volumes, Barwon–Darling, unregulated

Volume weighted average price (\$/ML)			February 2018 (in \$/ML)					February 2018	February 2018	Broker buy/sell
Month of	February 2018	past 12	25th percentile	75th percentile	Median	Mean	Mode	Volume	# of trades	range (\$/ML)
February 2018	Quarter	months								
-	1 500	1 149	-	-	-	-	-	-	-	No listings

Water entitlement market prices Murray–Darling Basin (February 2018)

## Lachlan: General security

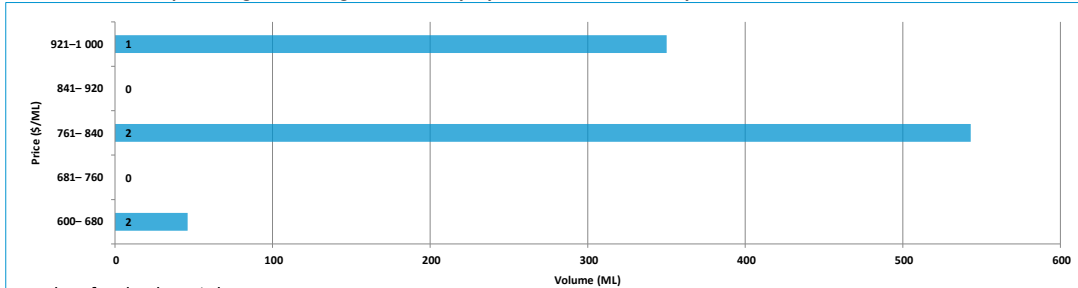
Entitlement market prices and volumes, Lachlan, general security, July 2010 to February 2018



Entitlement market prices and volumes, Lachlan, general security

Volume weighted average price (\$/ML)			February 2018 (in \$/ML)					February 2018	February 2018	Broker buy/sell
Month of	February 2018	past 12	25th percentile	75th percentile	Median	Mean	Mode	Volume	# of trades	range (\$/ML)
February 2018	Quarter	months								
866	781	627	650	800	800	770	800	939	5	600 - 900

Entitlement market price range, Lachlan, general security, by volume month February 2018



Number of trades shown in bars

Water entitlement market prices Murray-Darling Basin (February 2018)

## Queensland: Trade Summary

### Entitlement market prices and volumes, Queensland

Resource Operation Plan	Water Supply Scheme / Water Management Area	Type of Entitlement	Volume weighted average price (\$/ML)			January 2017 (in \$/ML)					January 2017 Volume	January 2017 # of trades	Broker buy/sell range (\$/ML)	
			Month of January 2017	January 2017 Quarter	past 12 months	25th percentile	75th percentile	Median	Mean	Mode				
QLD Border Rivers	Border Rivers/ Macintyre Brook	Supplemented	-	2 034	1 535	-	-	-	-	-	-	-	-	2 200
QLD Border Rivers	Border Rivers	Unsupplemented	-	-	1 925	-	-	-	-	-	-	-	-	No listings
Condamine-Balonne	St. George / Upper Condamine	Supplemented	-	-	2 871	-	-	-	-	-	-	-	-	1 800 - 2 000
Condamine-Balonne	Condamine Balonne / Lower Balonne / Upper Condamine	Unsupplemented	-	1 800	2 144	-	-	-	-	-	-	-	-	700
Condamine-Balonne	Upper Condamine	Alluvium Groundwater	-	-	1 950	-	-	-	-	-	-	-	-	No listings
Condamine-Balonne	Lower Balonne	Overland Flow	-	-	-	-	-	-	-	-	-	-	-	No listings

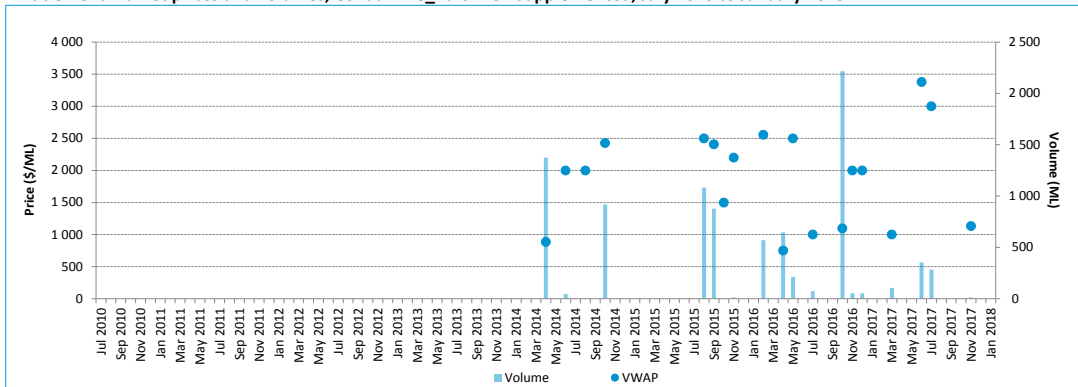
Note: No trades have been reported for Queensland in February 2018. Tables show the monthly trade figures until the end of January 2018.

Water entitlement market prices Murray-Darling Basin (February 2018)

**MARSDEN JACOB ASSOCIATES**

## Condamine Balonne: Supplemented

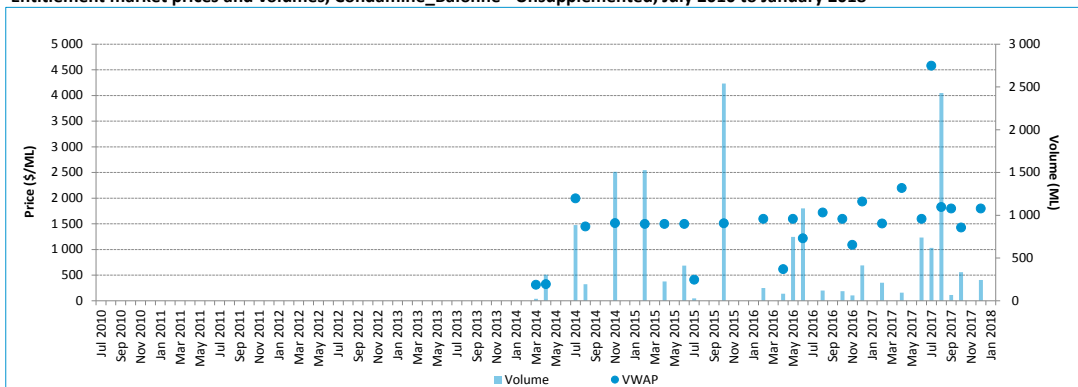
Entitlement market prices and volumes, Condamine\_Balonne - Supplemented, July 2010 to January 2018



Note: No trades have been reported for Queensland in February 2018. Charts show the monthly trade volume and value until the end of January 2018.

## Condamine Balonne: Unsupplemented

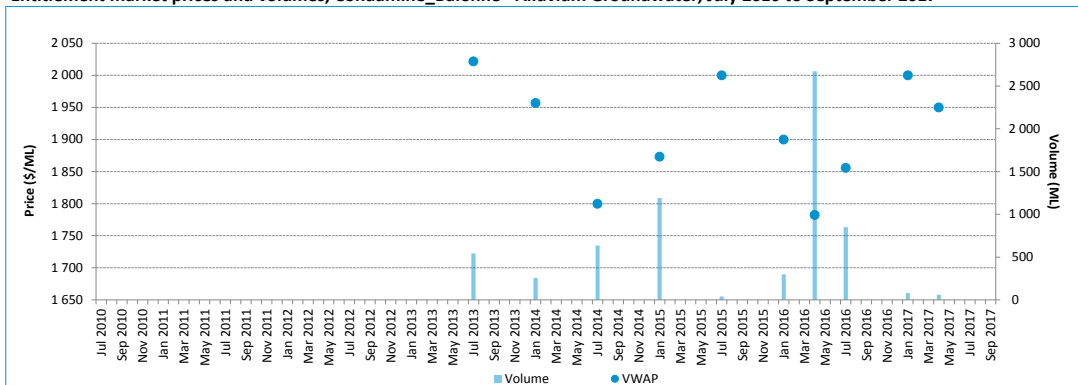
Entitlement market prices and volumes, Condamine\_Balonne - Unsupplemented, July 2010 to January 2018



Note: No trades have been reported for Queensland in February 2018. Charts show the monthly trade volume and value until the end of January 2018.

## Condamine Balonne: Alluvium Groundwater

Entitlement market prices and volumes, Condamine\_Balonne - Alluvium Groundwater, July 2010 to September 2017

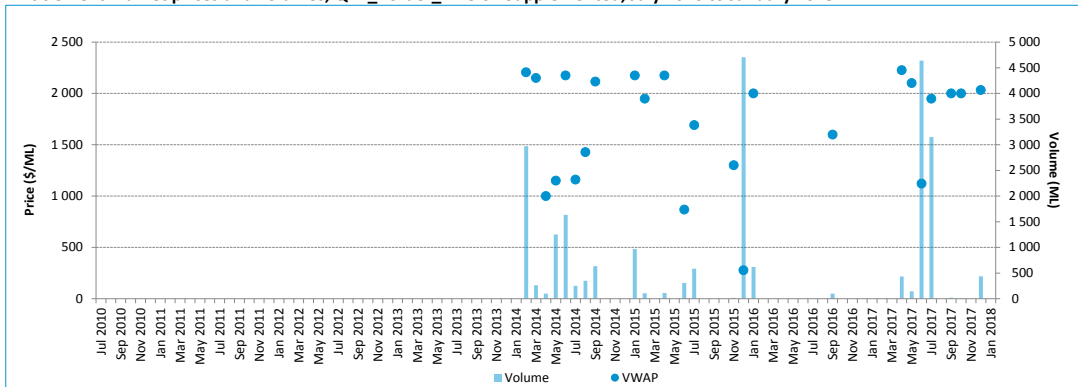


Note: No trades have been reported for Queensland since October 2017. Charts show the monthly trade volume and value until the end of September.

Water entitlement market prices Murray–Darling Basin (February 2018)

## QLD Border Rivers: Supplemented

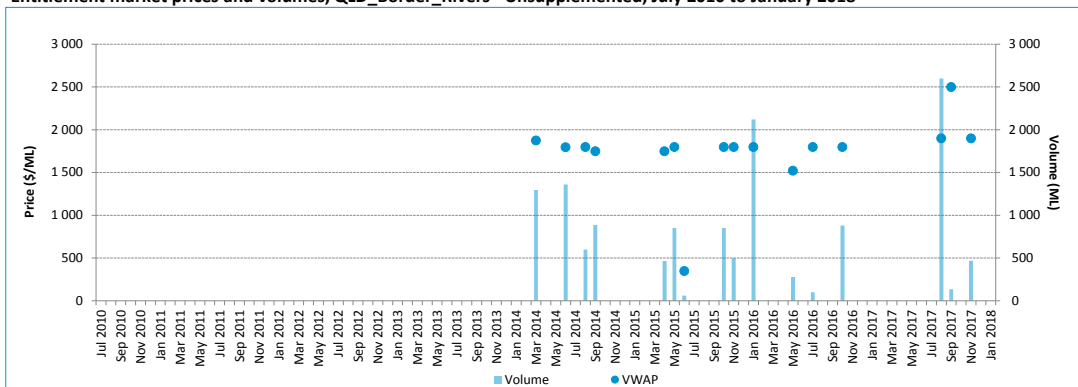
Entitlement market prices and volumes, QLD\_Border\_Rivers - Supplemented, July 2010 to January 2018



Note: No trades have been reported for Queensland in February 2018. Charts show the monthly trade volume and value until the end of January 2018.

## QLD Border Rivers: Unsupplemented

Entitlement market prices and volumes, QLD\_Border\_Rivers - Unsupplemented, July 2010 to January 2018



Note: No trades have been reported for Queensland in February 2018. Charts show the monthly trade volume and value until the end of January 2018.

Water entitlement market prices Murray–Darling Basin (February 2018)

## Appendix A: Regions and water sources

**Table A1 Water sources (southern MDB)**

Region	Water source
SA Murray	River Murray Prescribed Water Course (Class 3a)
Vic. Murray above Barmah Choke	6 Vic. Murray Dart to Barmah
Vic. Murray below Barmah Choke	7 Vic. Murray Barmah to SA 6B Lower Broken Creek
Goulburn	1A Greater Goulburn 1B Boort 3 Lower Goulburn
Campaspe	4A Campaspe Eppalock to WWC 4C Lower Campaspe
Loddon	5A Loddon–Coliban Channel to Lower Weir Pool (now SA Loddon – CC/Tull to LWP) 5B Bullarook
NSW Murray	New South Wales Murray Regulated River Water Source
Murrumbidgee	Murrumbidgee Regulated River Water Source
Lower Darling	Lower Darling Regulated River Water Source

**Table A2 Water sources (northern MDB)**

Region	Water source
Macquarie	Macquarie and Cudgegong Regulated Rivers Water Source
Namoi	Lower Namoi Regulated River Water Source Upper Namoi Regulated River Water Source
Gwydir	Gwydir Regulated River Water Source
NSW Border Rivers	Border Rivers Regulated River Water Source
Barwon–Darling	Barwon–Darling Unregulated River Water Source
Lachlan	Lachlan Regulated River Water Source

## Appendix B: Trades Excluded

Table B1 shows trades that have been excluded from the February 2018 analysis.

**Table B1 Outliers removed from trade data**

Date	Catchment	Product name	Volume (ML)	Price (\$)	Price per ML (\$/ML)
12/02/2018	Goulburn	High Reliability	2	\$ 3 000	\$1 500
13/02/2018	Goulburn	Low Reliability	50	\$ 25 200	\$ 500
19/02/2018	Namoi	General Security	30	\$ 20 000	\$ 667
1/02/2018	NSW_Murray	General Security	-	\$ 0	\$ 1
14/02/2018	NSW_Murray	General Security	-	\$ 0	\$ 150
20/02/2018	NSW_Murray	General Security	44	\$ 1	\$ 0
13/02/2018	NSW_Murray	High Security	11	\$ 35 750	\$3 250
6/02/2018	SA_Murray	Class 3a	53	\$ 1	\$ 0
2/02/2018	Vic_Murray_BelowBC	High Reliability	2	\$ 2 250	\$1 500
12/02/2018	Vic_Murray_BelowBC	High Reliability	2	\$ 4 000	\$2 000
13/02/2018	Vic_Murray_BelowBC	High Reliability	2	\$ 3 600	\$1 800
14/02/2018	Vic_Murray_BelowBC	High Reliability	5	\$ 10 000	\$2 000
15/02/2018	Vic_Murray_BelowBC	High Reliability	171	\$ 341 000	\$2 000
20/02/2018	Vic_Murray_BelowBC	High Reliability	2	\$ 3 000	\$2 000
28/02/2018	Vic_Murray_BelowBC	High Reliability	2	\$ 3 000	\$2 000
15/02/2018	Vic_Murray_BelowBC	Low Reliability	77	\$ 15 460	\$ 200