

Water entitlement market prices

Murray–Darling Basin

(December 2016)

Prepared for Australian Government Department of Agriculture and Water Resources

MARSDEN JACOB ASSOCIATES

Marsden Jacob Associates
Financial & Economic Consultants
ABN 66 663 324 657
ACN 072 233 204
[Internet: http://www.marsdenjacob.com.au](http://www.marsdenjacob.com.au)
[E-mail: economists@marsdenjacob.com.au](mailto:economists@marsdenjacob.com.au)

This product has been prepared in accordance with the scope of services described in the contract or agreement between Marsden Jacob Associates Pty Ltd ACN 072 233 204 (MJA) and the Client. Any findings, conclusions or recommendations only apply to the aforementioned circumstances and no greater reliance should be assumed or drawn by the Client. Furthermore, the report has been prepared solely for use by the Client and Marsden Jacob Associates accepts no responsibility for its use by other parties.

Copyright © Marsden Jacob Associates Pty Ltd 2017

Introduction

This December 2016 monthly water entitlement market prices report has been prepared by Marsden Jacob Associates (Marsden Jacob) for the Australian Government Department of Agriculture and Water Resources.

A water access entitlement is a perpetual or ongoing entitlement to exclusive access to a share of water from a specified consumptive pool, as defined in the relevant water plan.

The report includes:

- southern Murray–Darling Basin (MDB) market activity and price information, by region and entitlement type
- northern MDB market activity and price information, by region and entitlement type
- a list of catchments and water sources
- a list of data outliers removed from the trade data

Regions, entitlements and key statistics

The entitlement price report is broadly split into the southern and the northern MDB, as detailed in Table 1 and Table 2. Interactive maps showing the location of these trading regions are available on the Murray–Darling Basin Authority's website.

The water sources included in each of the regions are listed in Appendix A.

Table 1: Regions and entitlement types, southern MDB

Region	Entitlement type
SA Murray	Class 3a
Vic. Murray above Barmah Choke	High reliability
Vic. Murray above Barmah Choke	Low reliability
Vic. Murray below Barmah Choke	High reliability
Vic. Murray below Barmah Choke	Low reliability
Goulburn	High reliability
Goulburn	Low reliability
Campaspe	High reliability
Loddon	High reliability
NSW Murray	General security
NSW Murray	High security
NSW Murray Irrigation Limited	General security
Murrumbidgee	General security
Murrumbidgee	High security
Lower Darling	General security
Lower Darling	High security

Table 2: Regions and entitlement types, northern MDB

Region	Entitlement type
Macquarie	General security
Namoi	General security
Gwydir	General security
NSW Border Rivers	General security
Barwon–Darling	Unregulated
Lachlan	General security
Condamine–Balonne (St George)	Supplemented
Condamine–Balonne (Upper Condamine and Lower Balonne)	Unsupplemented
Central Condamine Alluvium Groundwater (1, 2, 3 and 4)	Groundwater (sub areas 1, 2, 3 and 4)
Upper Condamine Alluvium Groundwater (Dalrymple Creek)	Groundwater
Upper Condamine Alluvium Groundwater (Oakey Creek)	Groundwater
Qld Border Rivers	Supplemented
Qld Border Rivers	Unsupplemented
Lower Balonne	Overland flow

As requested by the department, for each of the regions and water entitlement categories Marsden Jacob reports a range of measures, subject to data availability and the number of trades:

- volume weighted average price (VWAP)
- median price
- mean price
- mode price
- 25th and 75th percentile prices
- price quintiles
- trade volume
- number of trades
- water trading exchange prices.

Data sources

The data sources for this report are:

- National Water Market Register data, up to 31 December 2013
- state government water registers and websites

- water exchange and broker noticeboard prices.

Notes

Entitlement prices in the state government water registers can lag the exchange date of contracts or water sale agreements by periods of days to several months. This means the entitlement prices shown in the monthly and quarterly VWAPs may not reflect all exchanges during the month.

Entitlement prices that do not appear to reflect arm's-length transactions have been excluded in the data cleaning process (see Appendix B).

Removing these values reduces price distortions in the reporting. This means prices in this report may differ from prices shown in registers where these transactions have not been removed.

Marsden Jacob uses a two-stage process to clean the data:

1. Removing prices that may not be genuine; for example, removing transactions where the price was reported to be null (\$0 per ML)
2. Reviewing and potentially removing transactions outside two standard deviations from the average price of water entitlements by region (or trading zone) and by water product.

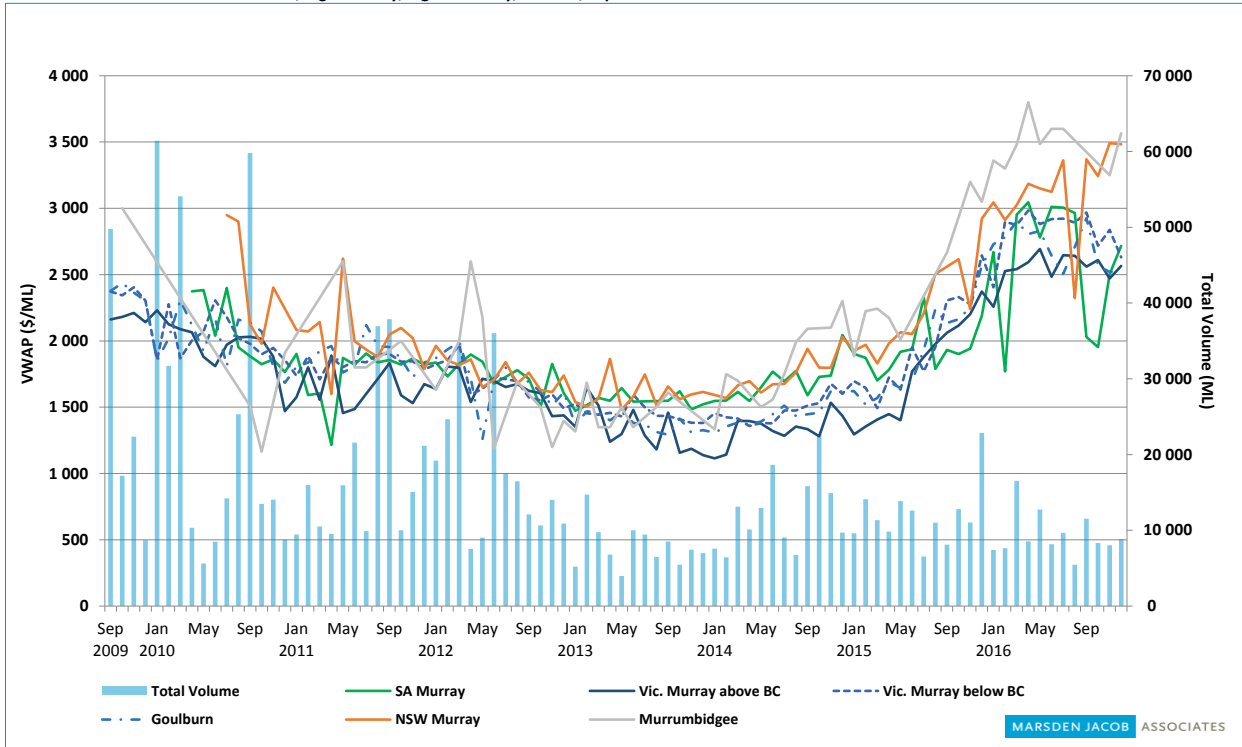
Marsden Jacob does not necessarily remove all trades that fall outside two standard deviations, as some of them reflect arm's-length trades. If trades that fall outside two standard deviations are retained in the regional dataset, this is noted in the region and entitlement-specific reports. Also, trades that fall within two standard deviations but are removed because they are not considered representative on the basis of recent data trends are also noted in the region and entitlement-specific reports as well as Appendix B.

Water entitlement market prices Murray–Darling Basin (December 2016)

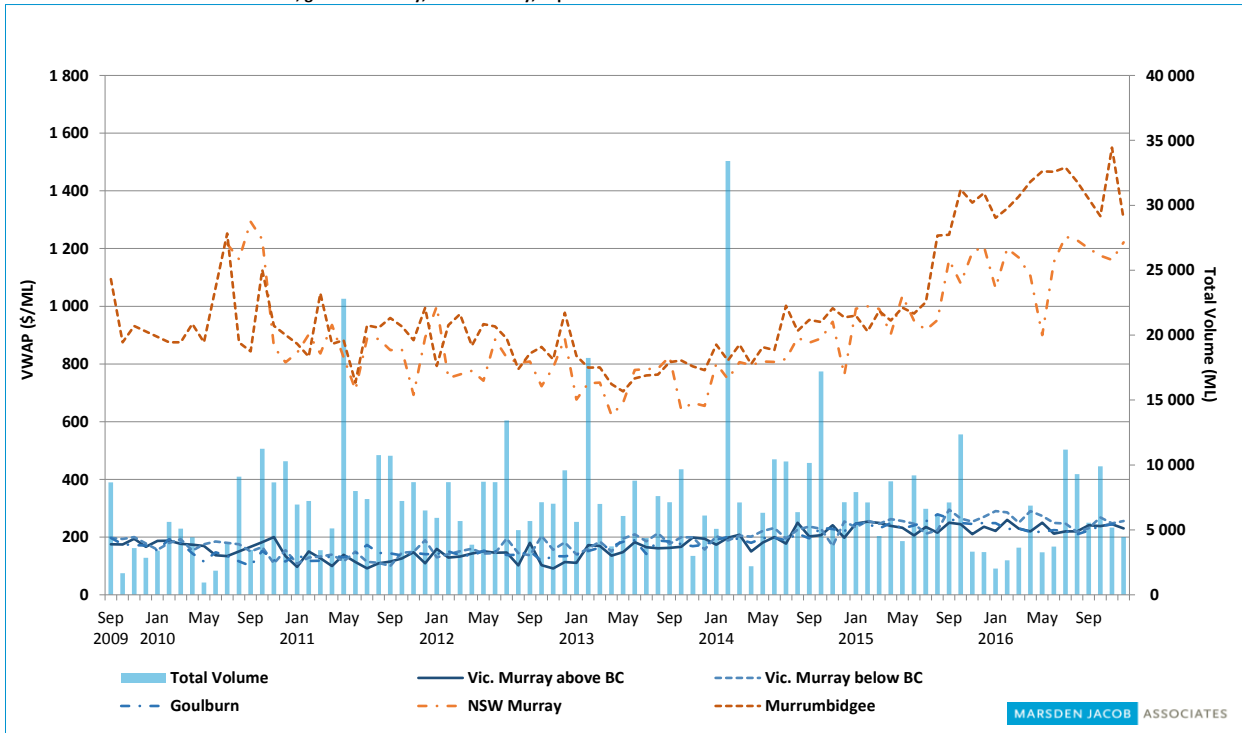
MARSDEN JACOB ASSOCIATES

Southern Murray–Darling Basin

Price correlations in the southern MDB, high security, high reliability, Class 3a, September 2009 to December 2016



Price correlations in the southern MDB, general security, low reliability, September 2009 to December 2016

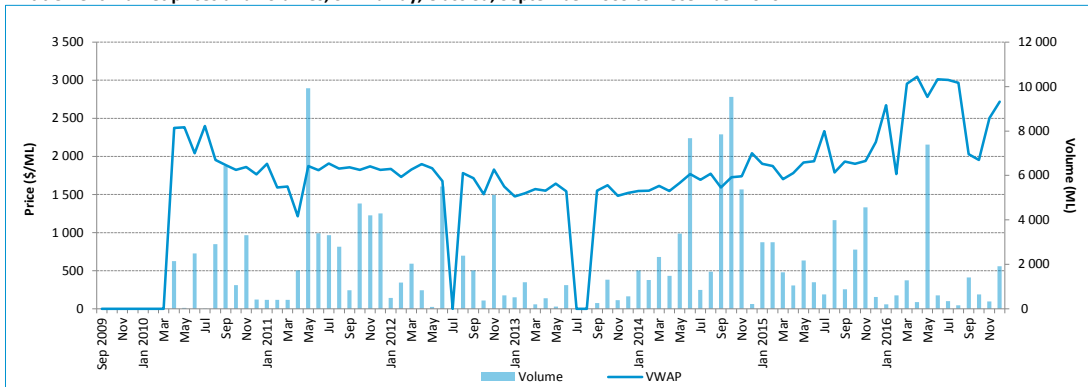


Source: Marsden Jacob analysis, 2016.

Water entitlement market prices Murray–Darling Basin (December 2016)

Southern Australian Murray: Class 3a

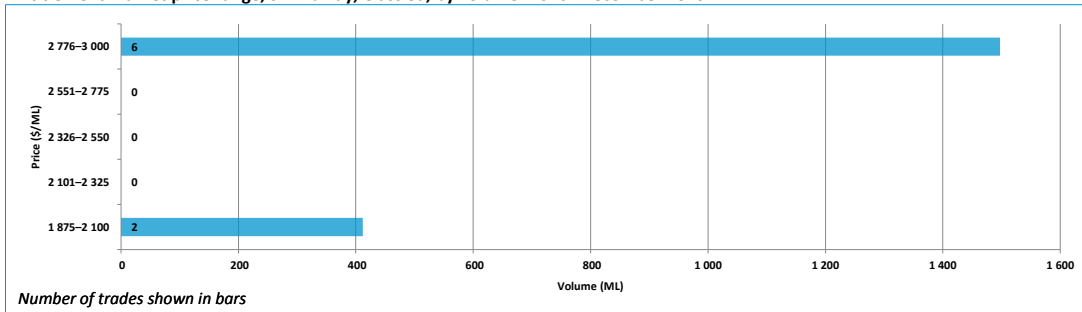
Entitlement market prices and volumes, SA Murray, Class 3a, September 2009 to December 2016



Entitlement market prices and volumes, SA Murray, Class 3a

Volume weighted average price (\$/ML)		December 2016 (in \$/ML)					December 2016 Volume	December 2016 # of trades	Broker buy/sell range (\$/ML)	
Month of December 2016	December 2016 Quarter	YTD	25th percentile	75th percentile	Median	Mean				Mode
2 716	2 519	2 656	2 606	2 963	2 875	2 663	1 875	1 910	8	2 600 - 3 000

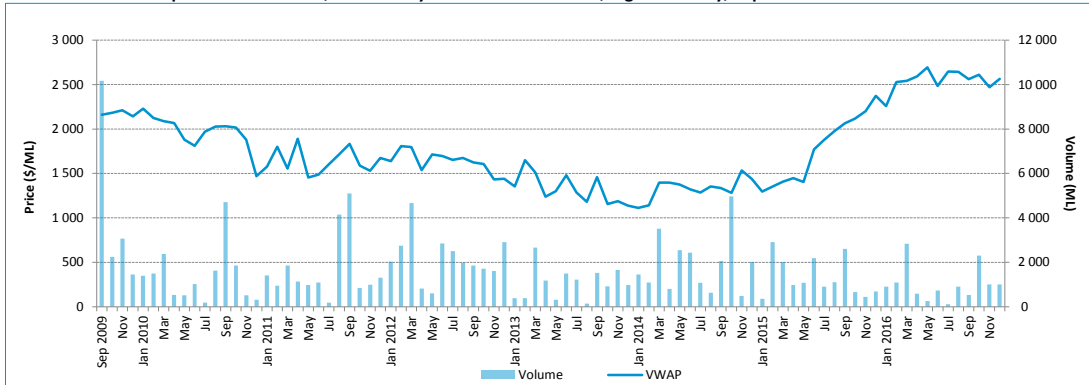
Entitlement market price range, SA Murray, Class 3a, by volume month December 2016



Water entitlement market prices Murray–Darling Basin (December 2016)

Victorian Murray above Barmah Choke: high reliability

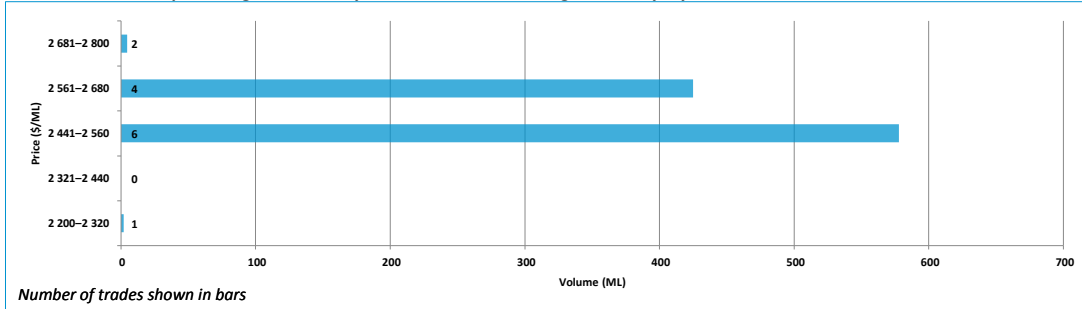
Entitlement market prices and volumes, Vic. Murray above Barmah Choke, high reliability, September 2009 to December 2016



Entitlement market prices and volumes, Vic. Murray above Barmah Choke, high reliability

Volume weighted average price (\$/ML)		December 2016 (in \$/ML)					December 2016 Volume	December 2016 # of trades	Broker buy/sell range (\$/ML)	
Month of December 2016	December 2016 Quarter	YTD	25th percentile	75th percentile	Median	Mean				Mode
2 565	2 567	2 540	2 500	2 615	2 550	2 555	2 500	1 009	13	2 450 - 2 700

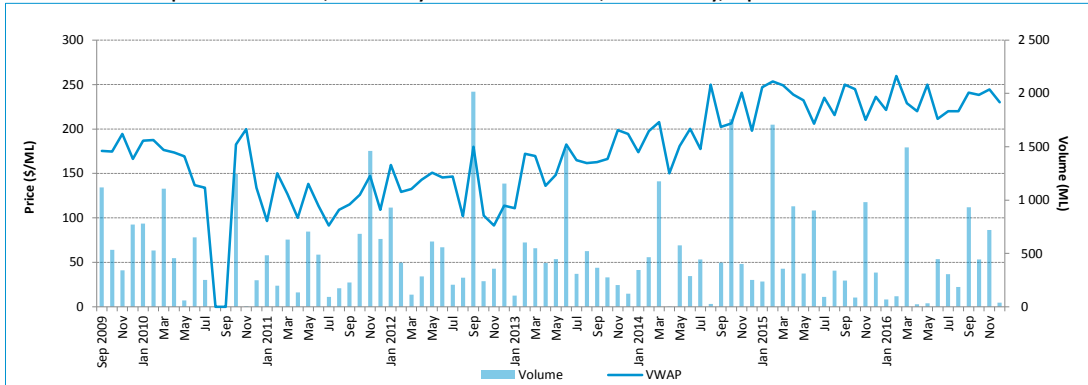
Entitlement market price range, Vic. Murray above Barmah Choke, high reliability, by volume month December 2016



Water entitlement market prices Murray-Darling Basin (December 2016)

Victorian Murray above Barmah Choke: low reliability

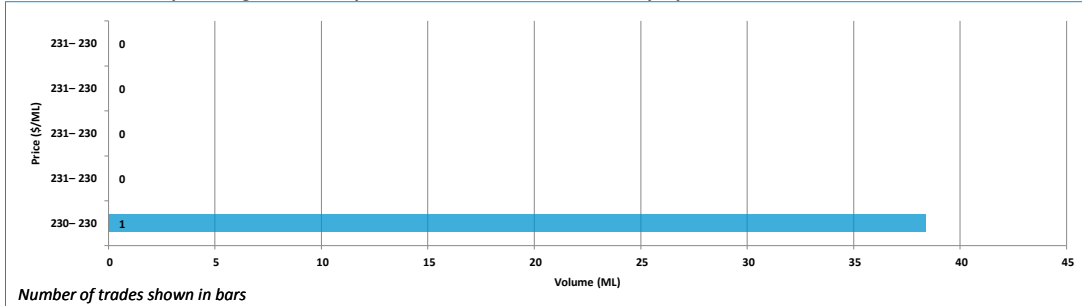
Entitlement market prices and volumes, Vic. Murray above Barmah Choke, low reliability, September 2009 to December 2016



Entitlement market prices and volumes, Vic. Murray above Barmah Choke, low reliability

Volume weighted average price (\$/ML)		December 2016 (in \$/ML)					December 2016 Volume	December 2016 # of trades	Broker buy/sell range (\$/ML)	
Month of December 2016	December 2016 Quarter	YTD	25th percentile	75th percentile	Median	Mean				Mode
230	242	233	230	230	230	230	-	38	1	225 - 250

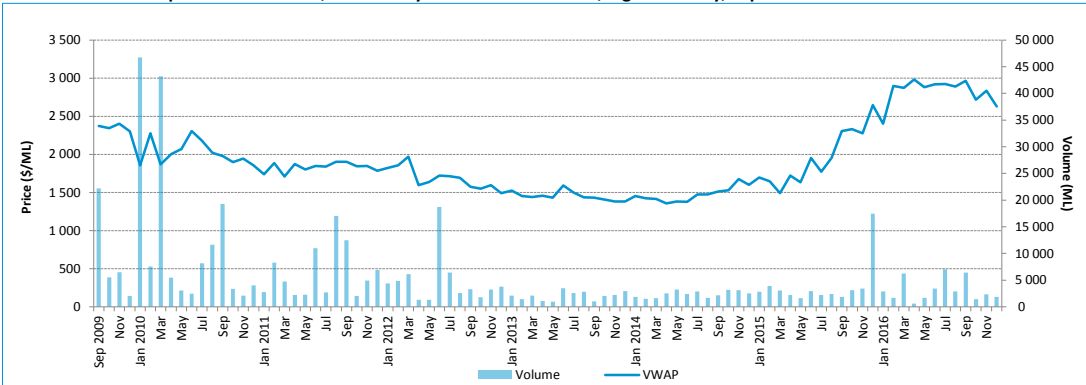
Entitlement market price range, Vic. Murray above Barmah Choke, low reliability, by volume month December 2016



Water entitlement market prices Murray-Darling Basin (December 2016)

Victorian Murray below Barmah Choke: high reliability

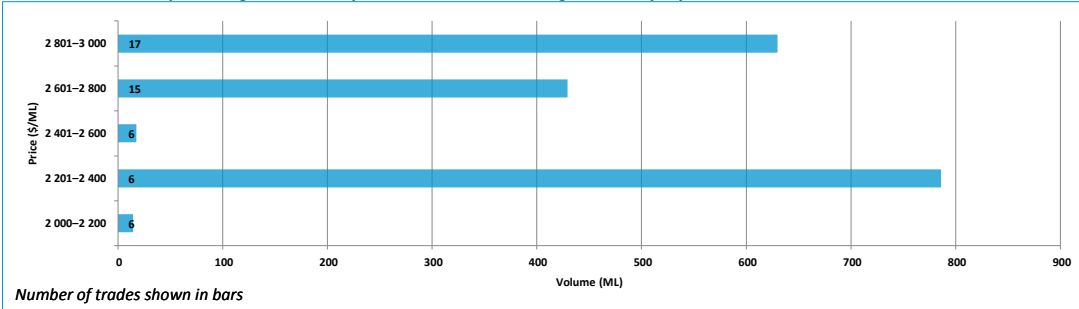
Entitlement market prices and volumes, Vic. Murray below Barmah Choke, high reliability, September 2009 to December 2016



Entitlement market prices and volumes, Vic. Murray below Barmah Choke, high reliability

Volume weighted average price (\$/ML)		December 2016 (in \$/ML)					December 2016 Volume	December 2016 # of trades	Broker buy/sell range (\$/ML)	
Month of December 2016	December 2016 Quarter	YTD	25th percentile	75th percentile	Median	Mean				Mode
2 630	2 738	2 852	2 500	2 888	2 800	2 660	3 000	1 877	50	2 500 - 2 950

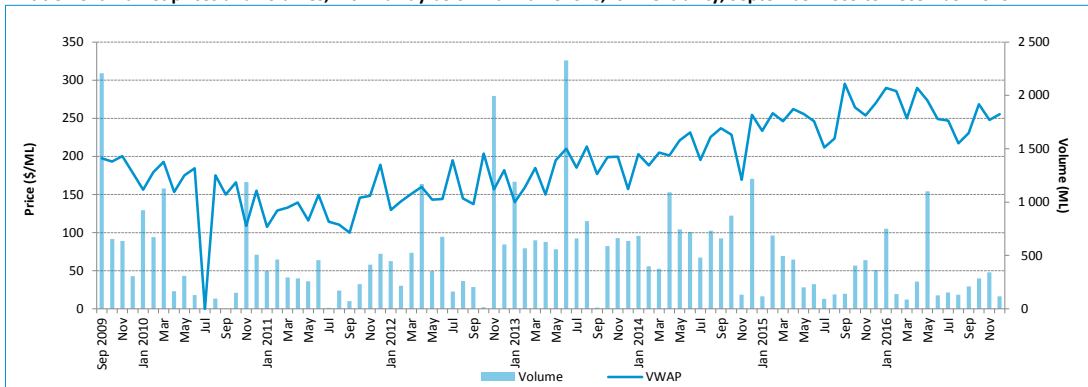
Entitlement market price range, Vic. Murray below Barmah Choke, high reliability, by volume month December 2016



Water entitlement market prices Murray-Darling Basin (December 2016)

Victorian Murray below Barmah Choke: low reliability

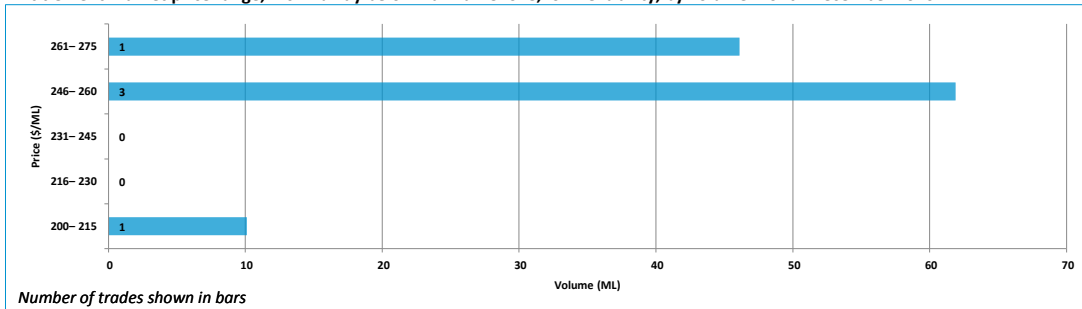
Entitlement market prices and volumes, Vic. Murray below Barmah Choke, low reliability, September 2009 to December 2016



Entitlement market prices and volumes, Vic. Murray below Barmah Choke, low reliability

Volume weighted average price (\$/ML)		December 2016 (in \$/ML)					December 2016 Volume	December 2016 # of trades	Broker buy/sell range (\$/ML)	
Month of December 2016	December 2016 Quarter	YTD	25th percentile	75th percentile	Median	Mean				Mode
255	257	268	250	250	250	245	250	118	5	240 - 260

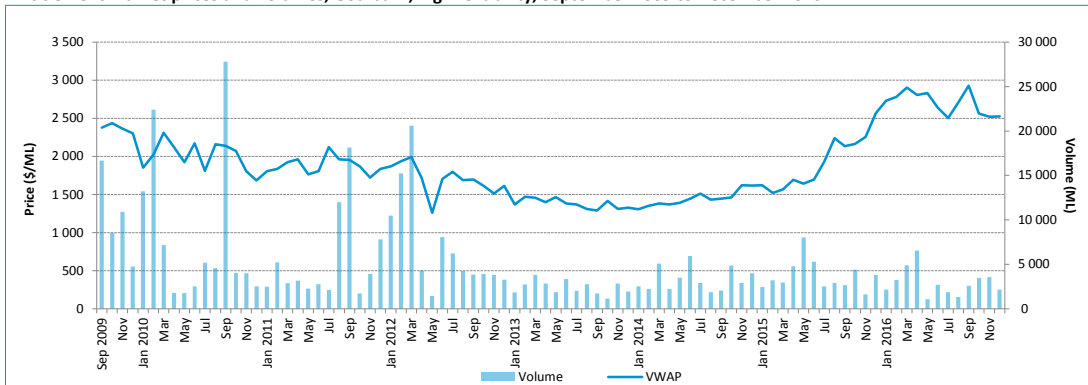
Entitlement market price range, Vic. Murray below Barmah Choke, low reliability, by volume month December 2016



Water entitlement market prices Murray-Darling Basin (December 2016)

Goulburn: high reliability

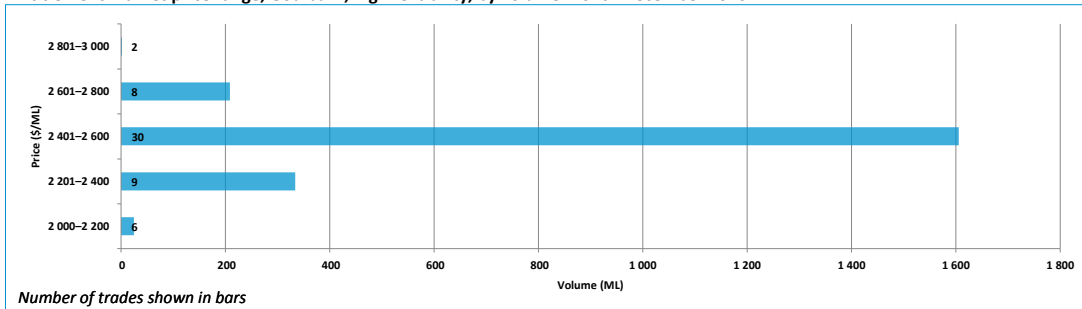
Entitlement market prices and volumes, Goulburn, high reliability, September 2009 to December 2016



Entitlement market prices and volumes, Goulburn, high reliability

Volume weighted average price (\$/ML)		December 2016 (in \$/ML)					December 2016 Volume	December 2016 # of trades	Broker buy/sell range (\$/ML)	
Month of December 2016	December 2016 Quarter	YTD	25th percentile	75th percentile	Median	Mean				Mode
2 525	2 538	2 721	2 370	2 600	2 500	2 498	2 500	2 175	55	2 400 - 2 650

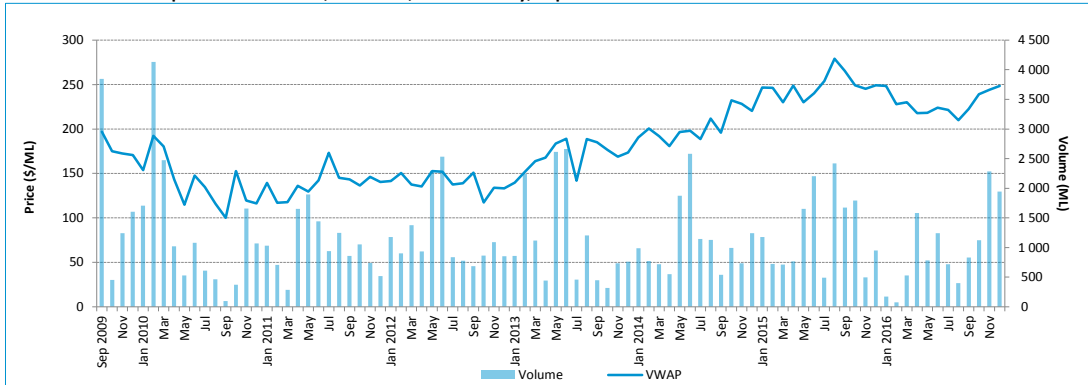
Entitlement market price range, Goulburn, high reliability, by volume month December 2016



Water entitlement market prices Murray-Darling Basin (December 2016)

Goulburn: low reliability

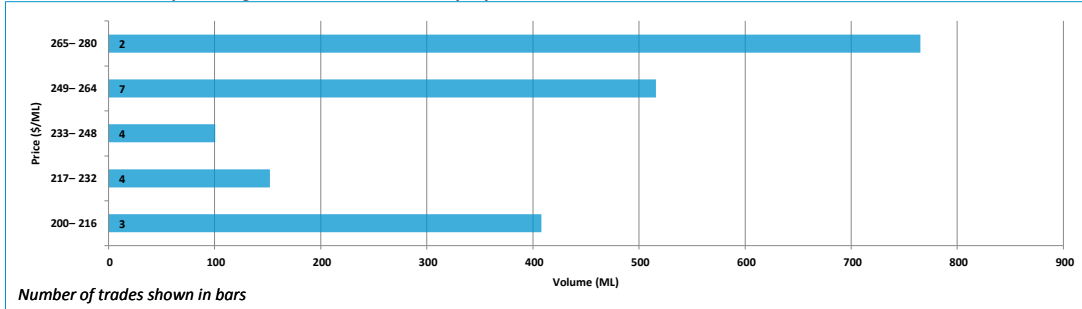
Entitlement market prices and volumes, Goulburn, low reliability, September 2009 to December 2016



Entitlement market prices and volumes, Goulburn, low reliability

Volume weighted average price (\$/ML)		December 2016 (in \$/ML)					December 2016 Volume	December 2016 # of trades	Broker buy/sell range (\$/ML)	
Month of December 2016	December 2016 Quarter	YTD	25th percentile	75th percentile	Median	Mean				Mode
249	245	232	225	250	240	239	250	1,942	20	225 - 275

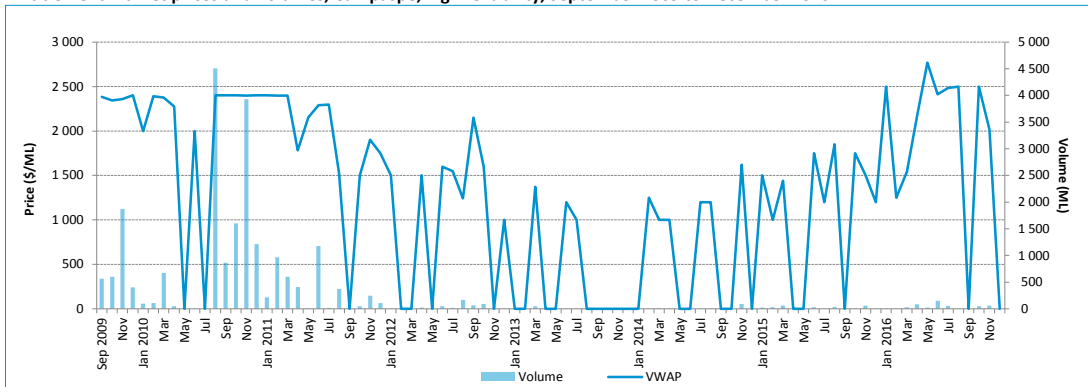
Entitlement market price range, Goulburn, low reliability, by volume month December 2016



Water entitlement market prices Murray–Darling Basin (December 2016)

Campaspe: high reliability

Entitlement market prices and volumes, Campaspe, high reliability, September 2009 to December 2016



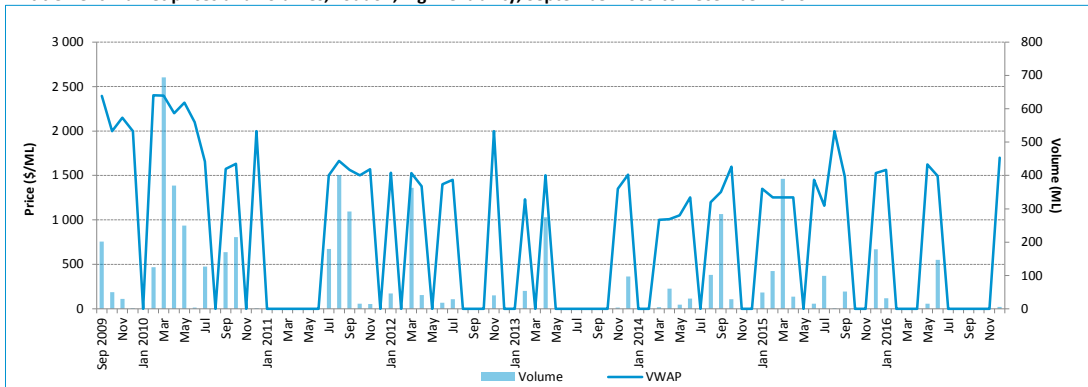
Entitlement market prices and volumes, Campaspe, high reliability

Volume weighted average price (\$/ML)		December 2016 (in \$/ML)					December 2016 Volume	December 2016 # of trades	Broker buy/sell range (\$/ML)
Month of December 2016	December 2016 Quarter	YTD	25th percentile	75th percentile	Median	Mean			
-	2 232	2 291	-	-	-	-	-	-	2 500 - 2 800

Water entitlement market prices Murray–Darling Basin (December 2016)

Loddon: high reliability

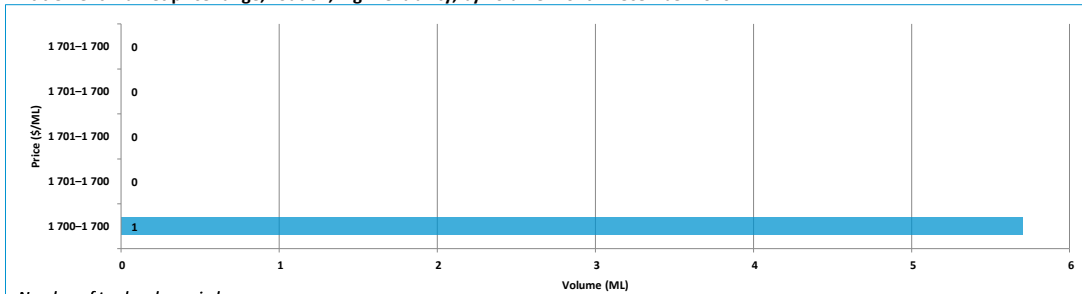
Entitlement market prices and volumes, Loddon, high reliability, September 2009 to December 2016



Entitlement market prices and volumes, Loddon, high reliability

Volume weighted average price (\$/ML)		December 2016 (in \$/ML)					December 2016 Volume	December 2016 # of trades	Broker buy/sell range (\$/ML)	
Month of December 2016	December 2016 Quarter	YTD	25th percentile	75th percentile	Median	Mean				Mode
1700	1700	1520	1700	1700	1700	1700	-	6	1	No listings

Entitlement market price range, Loddon, high reliability, by volume month December 2016

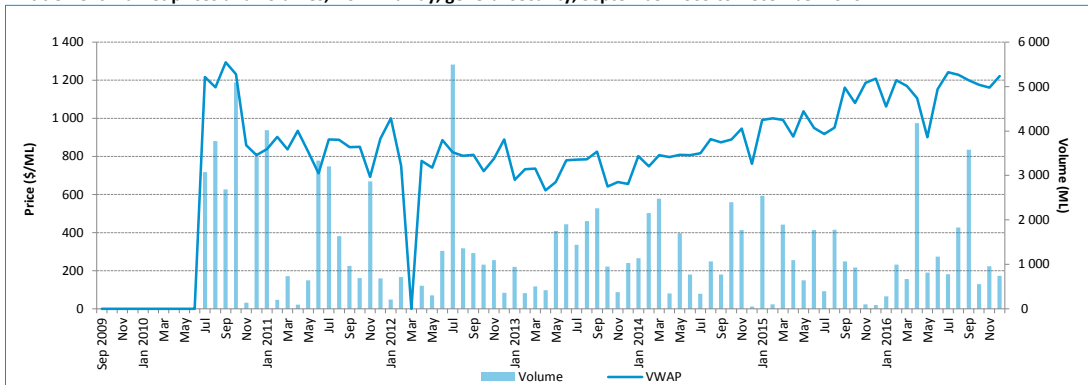


Number of trades shown in bars

Water entitlement market prices Murray–Darling Basin (December 2016)

New South Wales Murray: general security

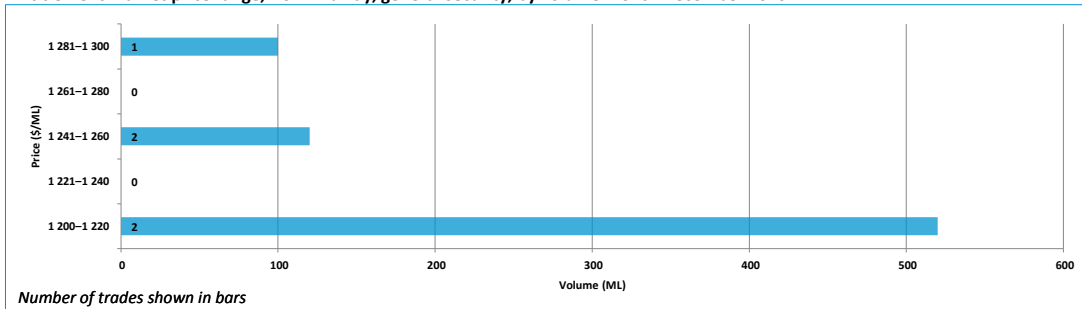
Entitlement market prices and volumes, NSW Murray, general security, September 2009 to December 2016



Entitlement market prices and volumes, NSW Murray, general security

Volume weighted average price (\$/ML)		December 2016 (in \$/ML)					December 2016 Volume	December 2016 # of trades	Broker buy/sell range (\$/ML)	
Month of December 2016	December 2016 Quarter	YTD	25th percentile	75th percentile	Median	Mean				Mode
1 222	1 184	1 158	1 200	1 250	1 250	1 240	1 250	740	5	1 100 - 1 300

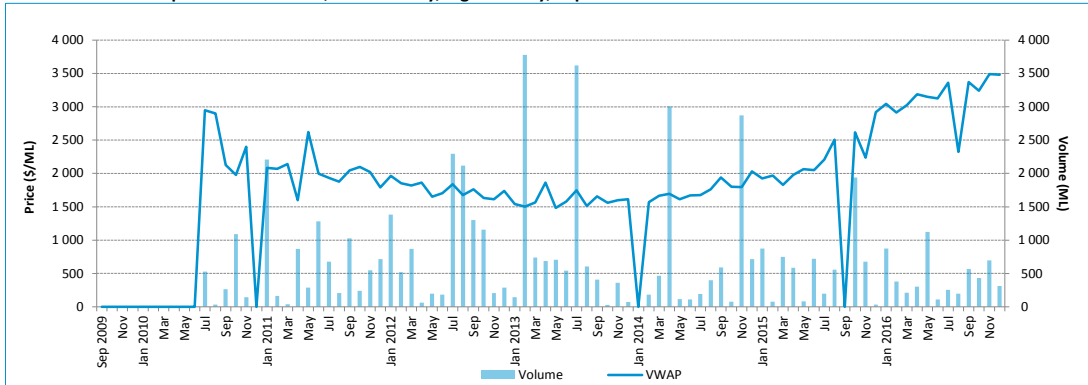
Entitlement market price range, NSW Murray, general security, by volume month December 2016



Water entitlement market prices Murray-Darling Basin (December 2016)

New South Wales Murray: high security

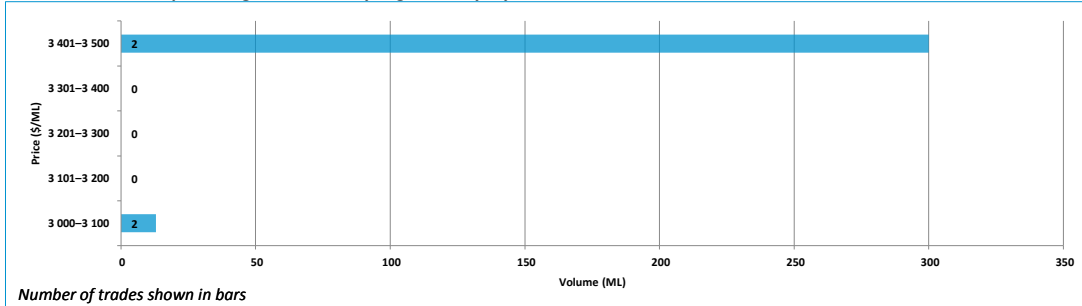
Entitlement market prices and volumes, NSW Murray, high security, September 2009 to December 2016



Entitlement market prices and volumes, NSW Murray, high security

Volume weighted average price (\$/ML)		December 2016 (in \$/ML)					December 2016 Volume	December 2016 # of trades	Broker buy/sell range (\$/ML)	
Month of December 2016	December 2016 Quarter	YTD	25th percentile	75th percentile	Median	Mean				Mode
3 482	3 415	3 185	3 075	3 500	3 300	3 275	3 500	313	4	3 150 - 3 550

Entitlement market price range, NSW Murray, high security, by volume month December 2016

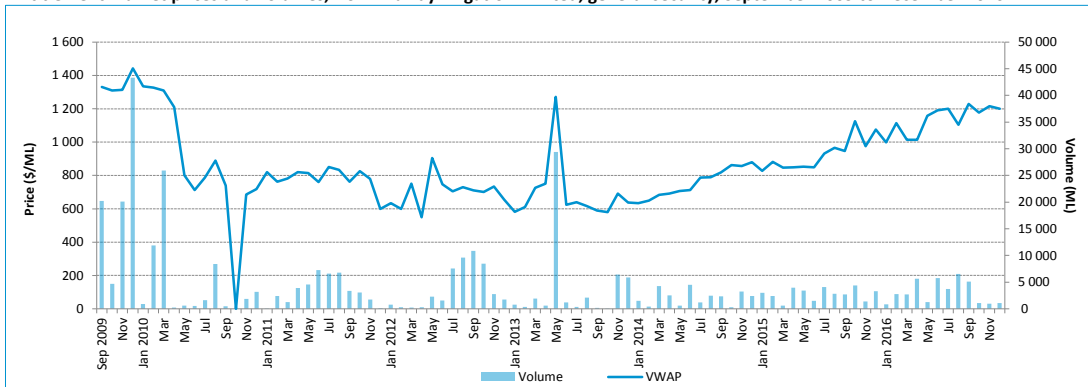


Number of trades shown in bars

Water entitlement market prices Murray-Darling Basin (December 2016)

New South Wales Murray Irrigation Limited

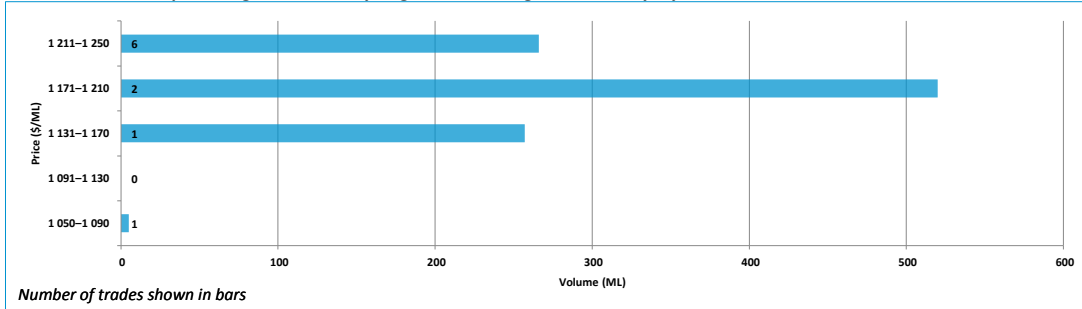
Entitlement market prices and volumes, NSW Murray Irrigation Limited, general security, September 2009 to December 2016



Entitlement market prices and volumes, NSW Murray Irrigation Limited, general security

Volume weighted average price (\$/ML)		December 2016 (in \$/ML)					December 2016 Volume	December 2016 # of trades	Broker buy/sell range (\$/ML)	
Month of December 2016	December 2016 Quarter	YTD	25th percentile	75th percentile	Median	Mean				Mode
1 200	1 197	1 132	1 200	1 250	1 250	1 210	1 250	1 048	10	1 100 - 1 300

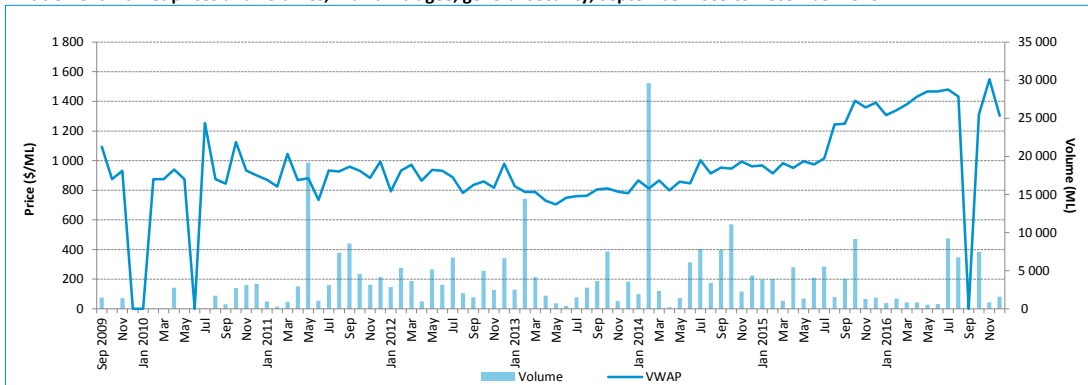
Entitlement market price range, NSW Murray Irrigation Limited, general security, by volume month December 2016



Water entitlement market prices Murray-Darling Basin (December 2016)

Murrumbidgee: general security

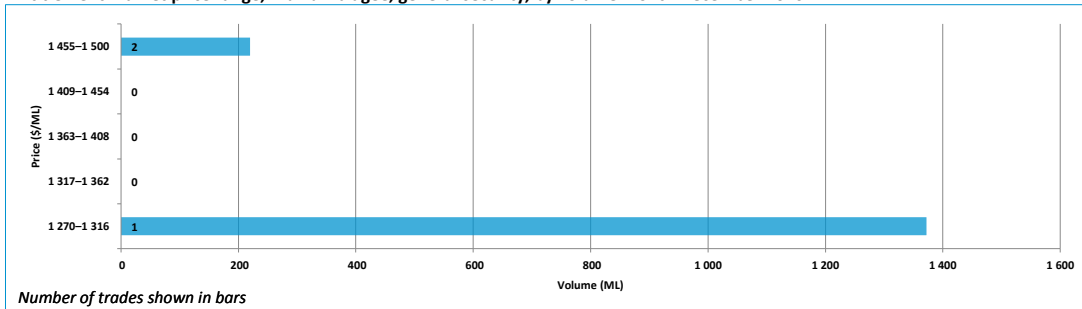
Entitlement market prices and volumes, Murrumbidgee, general security, September 2009 to December 2016



Entitlement market prices and volumes, Murrumbidgee, general security

Volume weighted average price (\$/ML)		December 2016 (in \$/ML)					December 2016 Volume	December 2016 # of trades	Broker buy/sell range (\$/ML)	
Month of December 2016	December 2016 Quarter	YTD	25th percentile	75th percentile	Median	Mean				Mode
1 302	1 331	1 407	1 385	1 500	1 500	1 423	1 500	1 592	3	1 350 - 1 500

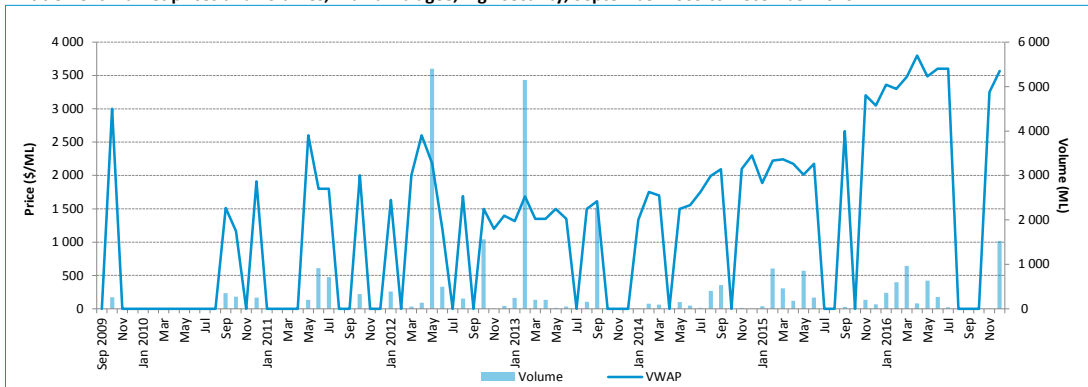
Entitlement market price range, Murrumbidgee, general security, by volume month December 2016



Water entitlement market prices Murray-Darling Basin (December 2016)

Murrumbidgee: high security

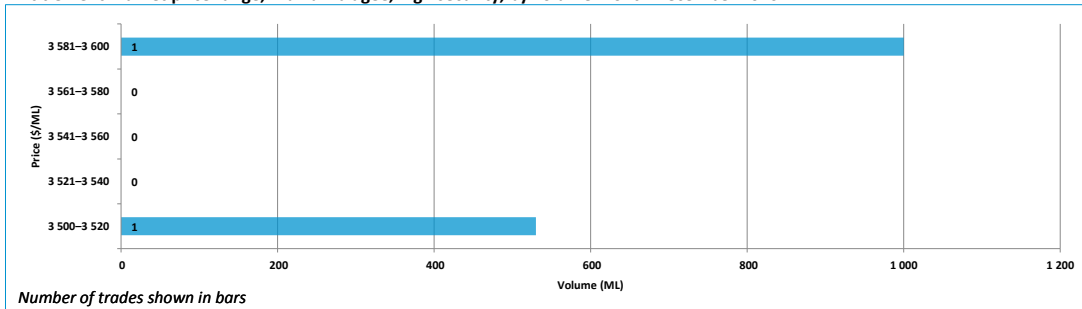
Entitlement market prices and volumes, Murrumbidgee, high security, September 2009 to December 2016



Entitlement market prices and volumes, Murrumbidgee, high security

Volume weighted average price (\$/ML)		December 2016 (in \$/ML)					December 2016 Volume	December 2016 # of trades	Broker buy/sell range (\$/ML)	
Month of December 2016	December 2016 Quarter	YTD	25th percentile	75th percentile	Median	Mean				Mode
3 565	3 565	3 492	3 525	3 575	3 550	3 550	-	1 530	2	3 400 - 3 700

Entitlement market price range, Murrumbidgee, high security, by volume month December 2016

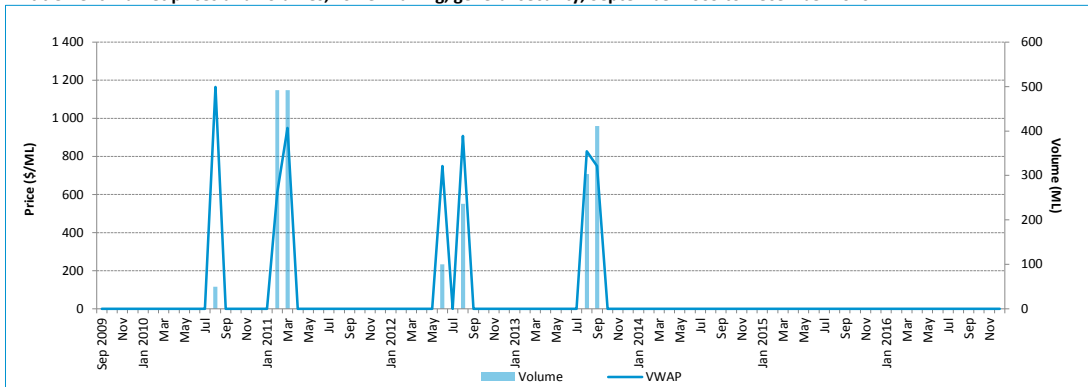


Number of trades shown in bars

Water entitlement market prices Murray-Darling Basin (December 2016)

Lower Darling: general security

Entitlement market prices and volumes, Lower Darling, general security, September 2009 to December 2016



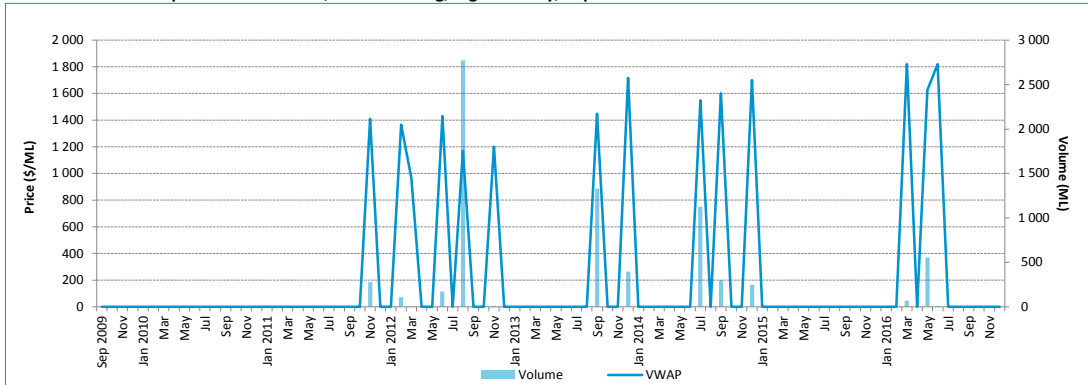
Entitlement market prices and volumes, Lower Darling, general security

Volume weighted average price (\$/ML)		December 2016 (in \$/ML)					December 2016 Volume	December 2016 # of trades	Broker buy/sell range (\$/ML)
Month of December 2016	December 2016 Quarter	YTD	25th percentile	75th percentile	Median	Mean			
-	-	-	-	-	-	-	-	-	No listings

Water entitlement market prices Murray–Darling Basin (December 2016)

Lower Darling: high security

Entitlement market prices and volumes, Lower Darling, high security, September 2009 to December 2016



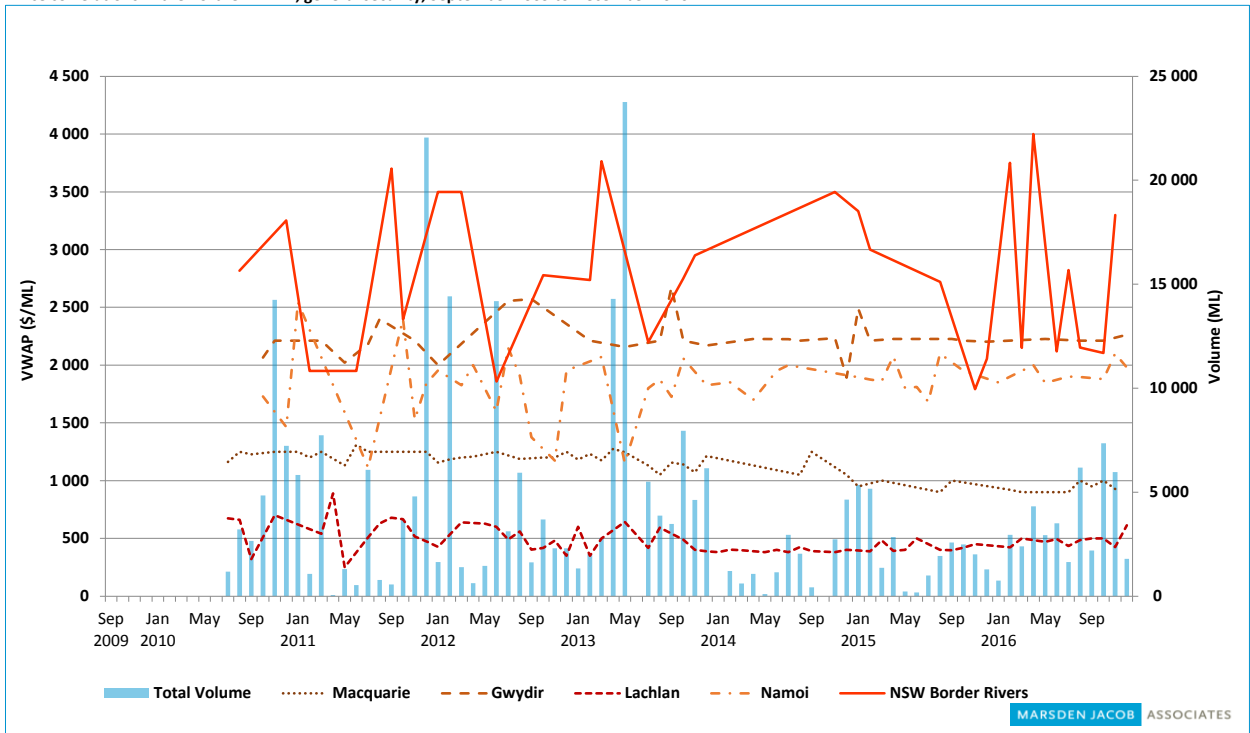
Entitlement market prices and volumes, Lower Darling, high security

Volume weighted average price (\$/ML)		December 2016 (in \$/ML)					December 2016 Volume	December 2016 # of trades	Broker buy/sell range (\$/ML)
Month of December 2016	December 2016 Quarter	YTD	25th percentile	75th percentile	Median	Mean			
-	-	1 650	-	-	-	-	-	-	No listings

Water entitlement market prices Murray–Darling Basin (December 2016)

Northern Murray–Darling Basin

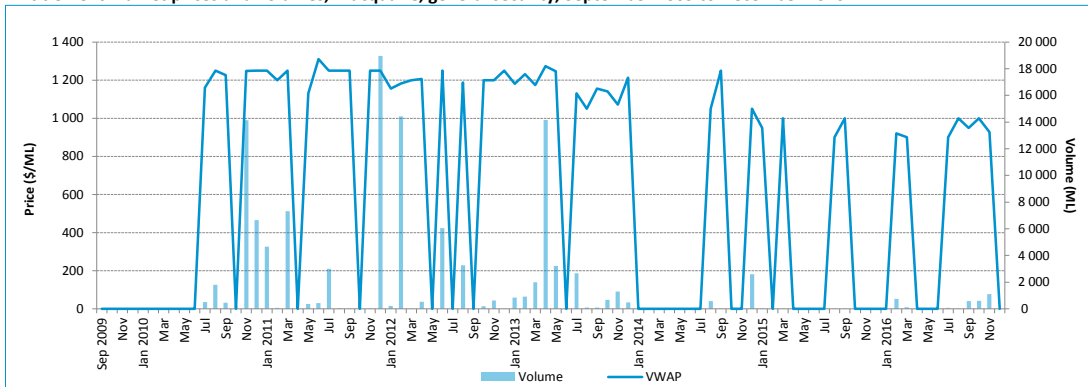
Price correlations in the northern MDB, general security, September 2009 to December 2016



Water entitlement market prices Murray–Darling Basin (December 2016)

Macquarie: general security

Entitlement market prices and volumes, Macquarie, general security, September 2009 to December 2016



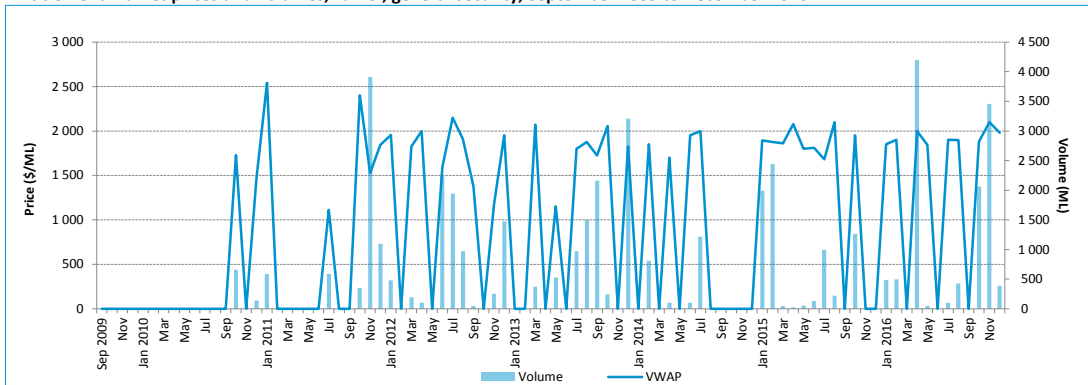
Entitlement market prices and volumes, Macquarie, general security

Volume weighted average price (\$/ML)		December 2016 (in \$/ML)					December 2016 Volume	December 2016 # of trades	Broker buy/sell range (\$/ML)
Month of December 2016	December 2016 Quarter	YTD	25th percentile	75th percentile	Median	Mean			
-	953	942	-	-	-	-	-	-	1 000 - 1 250

Water entitlement market prices Murray–Darling Basin (December 2016)

Namoi: general security

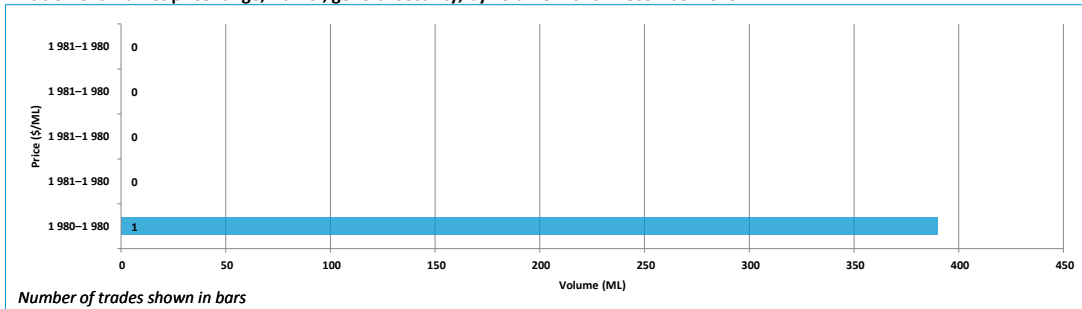
Entitlement market prices and volumes, Namoi, general security, September 2009 to December 2016



Entitlement market prices and volumes, Namoi, general security

Volume weighted average price (\$/ML)		December 2016 (in \$/ML)					December 2016 Volume	December 2016 # of trades	Broker buy/sell range (\$/ML)	
Month of December 2016	December 2016 Quarter	YTD	25th percentile	75th percentile	Median	Mean				Mode
1980	2015	1992	1980	1980	1980	1980	0	390	1	1900 - 2050

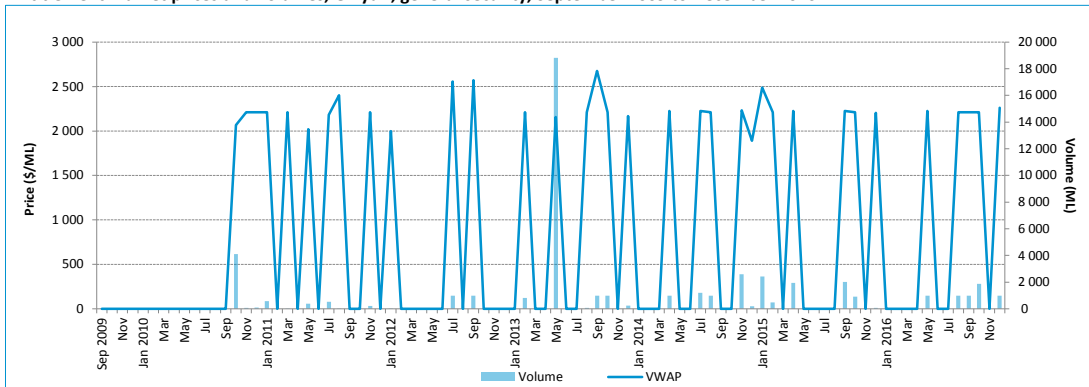
Entitlement market price range, Namoi, general security, by volume month December 2016



Water entitlement market prices Murray-Darling Basin (December 2016)

Gwydir: general security

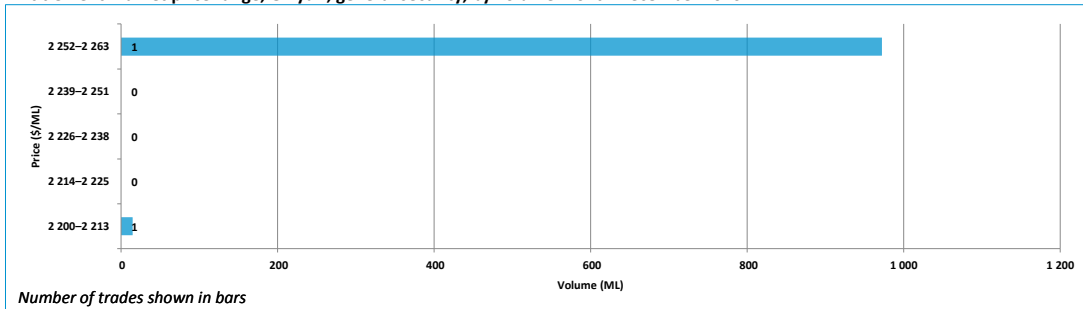
Entitlement market prices and volumes, Gwydir, general security, September 2009 to December 2016



Entitlement market prices and volumes, Gwydir, general security

Volume weighted average price (\$/ML)		December 2016 (in \$/ML)					December 2016 Volume	December 2016 # of trades	Broker buy/sell range (\$/ML)	
Month of December 2016	December 2016 Quarter	YTD	25th percentile	75th percentile	Median	Mean				Mode
2 262	2 229	2 223	2 216	2 248	2 232	2 232	-	987	2	2 000 - 2 300

Entitlement market price range, Gwydir, general security, by volume month December 2016

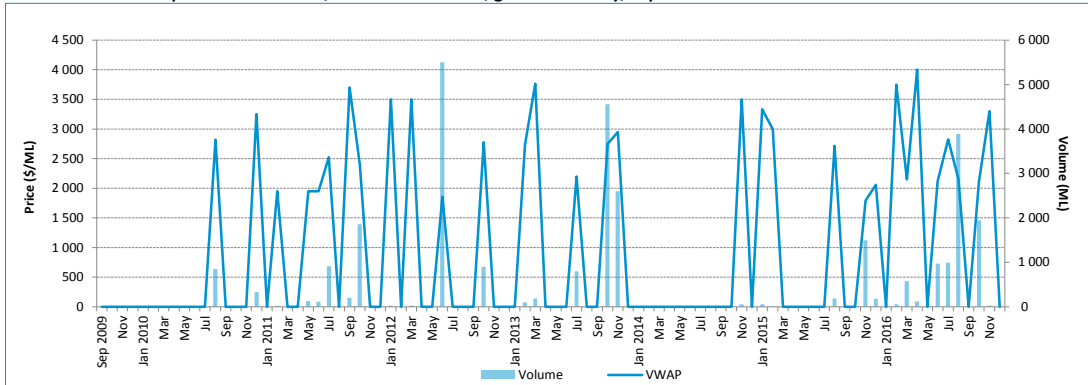


Number of trades shown in bars

Water entitlement market prices Murray-Darling Basin (December 2016)

New South Wales Border Rivers: general security

Entitlement market prices and volumes, NSW Border Rivers, general security, September 2009 to December 2016



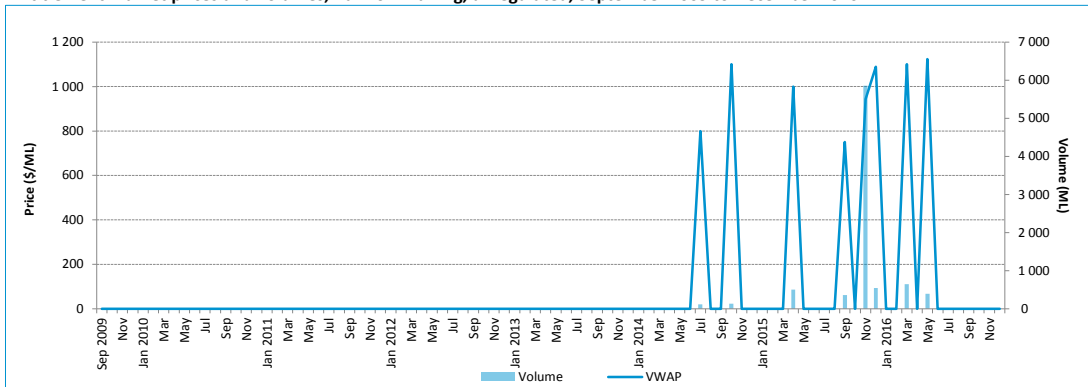
Entitlement market prices and volumes, NSW Border Rivers, general security

Volume weighted average price (\$/ML)		December 2016 (in \$/ML)					December 2016 Volume	December 2016 # of trades	Broker buy/sell range (\$/ML)
Month of December 2016	December 2016 Quarter	YTD	25th percentile	75th percentile	Median	Mean			
-	2 124	2 257	-	-	-	-	-	-	2 000 - 2 300

Water entitlement market prices Murray–Darling Basin (December 2016)

Barwon–Darling: unregulated

Entitlement market prices and volumes, Barwon–Darling, unregulated, September 2009 to December 2016



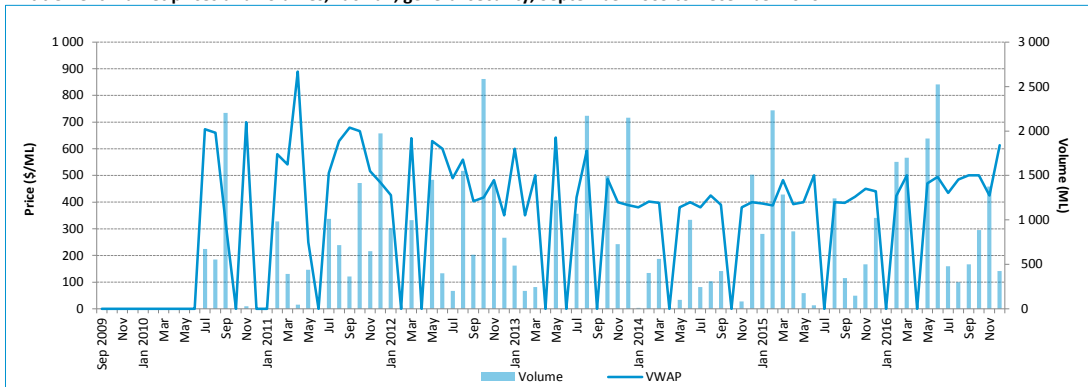
Entitlement market prices and volumes, Barwon–Darling, unregulated

Volume weighted average price (\$/ML)		December 2016 (in \$/ML)					December 2016 Volume	December 2016 # of trades	Broker buy/sell range (\$/ML)
Month of December 2016	December 2016 Quarter	YTD	25th percentile	75th percentile	Median	Mean			
-	-	1 109	-	-	-	-	-	-	No listing

Water entitlement market prices Murray–Darling Basin (December 2016)

Lachlan: General security

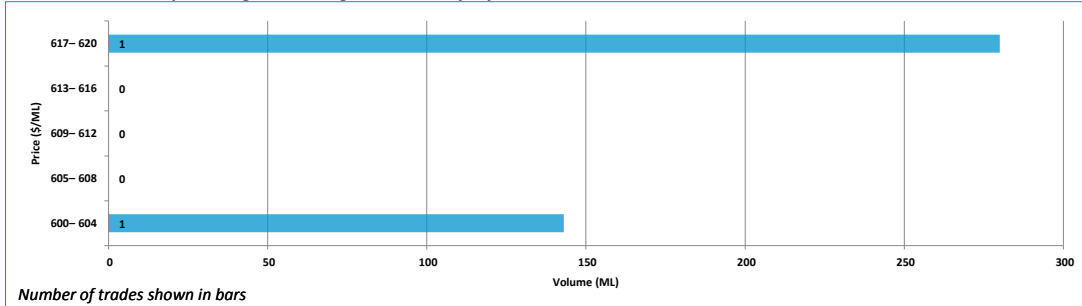
Entitlement market prices and volumes, Lachlan, general security, September 2009 to December 2016



Entitlement market prices and volumes, Lachlan, general security

Volume weighted average price (\$/ML)		December 2016 (in \$/ML)					December 2016 Volume	December 2016 # of trades	Broker buy/sell range (\$/ML)	
Month of December 2016	December 2016 Quarter	YTD	25th percentile	75th percentile	Median	Mean				Mode
613	479	475	605	615	610	610	-	423	2	500 - 650

Entitlement market price range, Lachlan, general security, by volume month December 2016



Water entitlement market prices Murray–Darling Basin (December 2016)

Queensland: Trade Summary

Entitlement market prices and volumes, Lachlan, general security

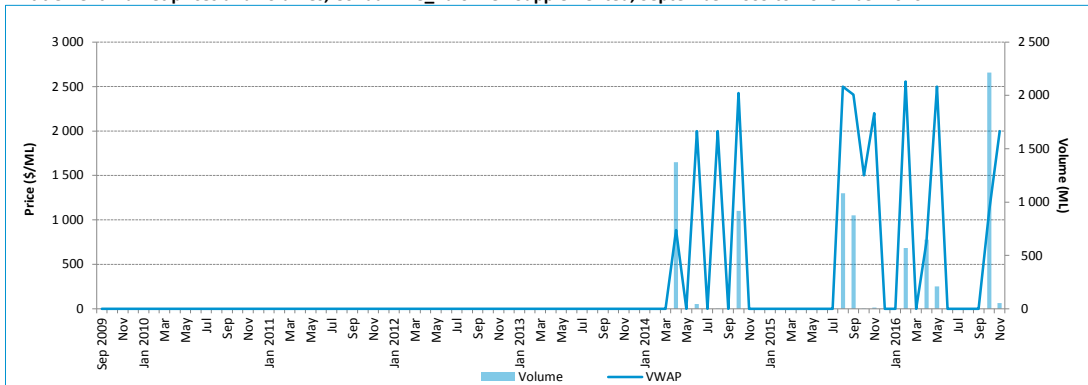
Resource Operation Plan	Water Supply Scheme / Water Management Area	Type of Entitlement	Volume weighted average price (\$/ML)			December 2016 (in \$/ML)					December 2016 # of trades	Broker buy/sell range (\$/ML)	
			Month of December 2016	December 2016 Quarter	YTD	25th percentile	75th percentile	Median	Mean	Mode			
QLD Border Rivers	Border Rivers/ Macintyre Brook	Supplemented	-	-	1 944	-	-	-	-	-	-	-	No listings
QLD Border Rivers	Border Rivers	Unsupplemented	-	1 800	1 777	-	-	-	-	-	-	-	No listings
Condamine-Balonne	St. George / Upper Condamine	Supplemented	-	1 119	1 355	-	-	-	-	-	-	-	No listings
Condamine-Balonne	Condamine Balonne / Lower Balonne / Upper Condamine	Unsupplemented	-	1 416	1 385	-	-	-	-	-	-	-	No listings
Condamine-Balonne	Upper Condamine	Alluvium Ground-water	-	-	-	-	-	-	-	-	-	-	No listings
Condamine-Balonne	Lower Balonne	Overland Flow	-	-	-	-	-	-	-	-	-	-	No listings

Water entitlement market prices Murray-Darling Basin (December 2016)

MARSDEN JACOB ASSOCIATES

Condamine Balonne: Supplemented

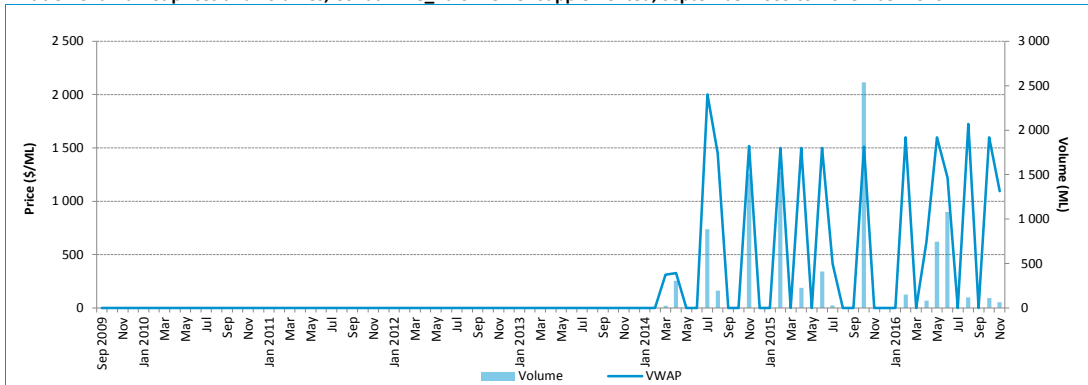
Entitlement market prices and volumes, Condamine_Balonne - Supplemented, September 2009 to November 2016



Note: No trades have been reported for Queensland in December 2016. Charts show the monthly trade volume and value until the end of November.

Condamine Balonne: Unsupplemented

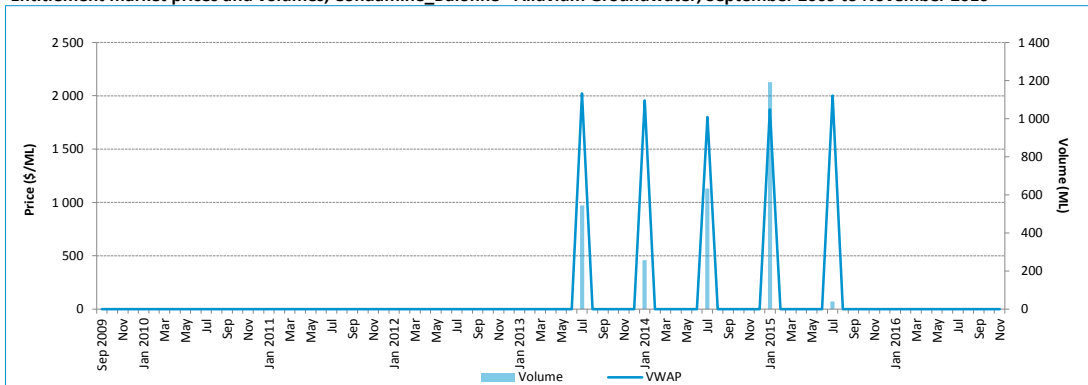
Entitlement market prices and volumes, Condamine_Balonne - Unsupplemented, September 2009 to November 2016



Note: No trades have been reported for Queensland in December 2016. Charts show the monthly trade volume and value until the end of November.

Condamine Balonne: Alluvium Groundwater

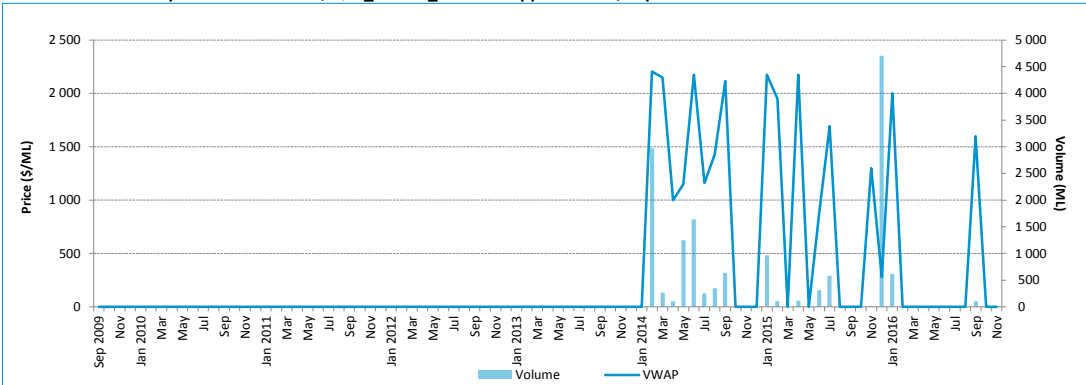
Entitlement market prices and volumes, Condamine_Balonne - Alluvium Groundwater, September 2009 to November 2016



Note: No trades have been reported for Queensland in December 2016. Charts show the monthly trade volume and value until the end of November.

QLD Border Rivers: Supplemented

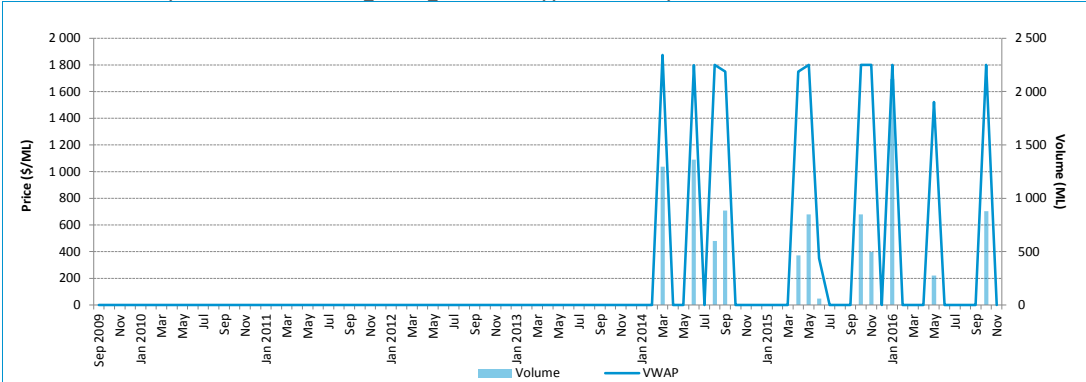
Entitlement market prices and volumes, QLD_Border_Rivers - Supplemented, September 2009 to November 2016



Note: No trades have been reported for Queensland in December 2016. Charts show the monthly trade volume and value until the end of November.

QLD Border Rivers: Unsupplemented

Entitlement market prices and volumes, QLD_Border_Rivers - Unsupplemented, September 2009 to November 2016



Note: No trades have been reported for Queensland in December 2016. Charts show the monthly trade volume and value until the end of November.

Water entitlement market prices Murray–Darling Basin (December 2016)

Appendix A: Regions and water sources

Table A1 Water sources (southern MDB)

Region	Water source
SA Murray	River Murray Prescribed Water Course (Class 3a)
Vic. Murray above Barmah Choke	6 Vic. Murray Dart to Barmah
Vic. Murray below Barmah Choke	7 Vic. Murray Barmah to SA 6B Lower Broken Creek
Goulburn	1A Greater Goulburn 1B Boort 3 Lower Goulburn
Campaspe	4A Campaspe Eppalock to WWC 4C Lower Campaspe
Loddon	5A Loddon–Coliban Channel to Lower Weir Pool (now 5A Loddon – CC/Tull to LWP) 5B Bullarook
NSW Murray	New South Wales Murray Regulated River Water Source
Murrumbidgee	Murrumbidgee Regulated River Water Source
Lower Darling	Lower Darling Regulated River Water Source

Table A2 Water sources (northern MDB)

Region	Water source
Macquarie	Macquarie and Cudgong Regulated Rivers Water Source
Namoi	Lower Namoi Regulated River Water Source Upper Namoi Regulated River Water Source
Gwydir	Gwydir Regulated River Water Source
NSW Border Rivers	Border Rivers Regulated River Water Source
Barwon–Darling	Barwon–Darling Unregulated River Water Source
Lachlan	Lachlan Regulated River Water Source

Appendix B: Trades Excluded

Table B1 shows trades that have been excluded from the December 2016 analysis.

Table B1 Outliers removed from trade data

Date	Catchment	Product name	Volume (ML)	Price (\$)	Price per ML (\$/ML)
1/12/2016	Broken	High Reliability	2	\$2 000	\$1 000
12/12/2016	Goulburn	High Reliability	28	\$36 140	\$1 300
14/12/2016	Goulburn	High Reliability	1	\$1 500	\$1 500
16/12/2016	Namoi	General Security	300	\$750 000	\$2 500
2/12/2016	NSW_Border_Rivers	General Security	120	\$5000 000	\$41 667
8/12/2016	NSW_Border_Rivers	General Security	1 860	\$1321 009	\$ 710
8/12/2016	NSW_Border_Rivers	General Security	24 665	\$675 081	\$ 27
9/12/2016	NSW_Murray	General Security	2	\$1 600	\$ 800
7/12/2016	NSW_Murray	High Security	-	\$ 0	\$ 250
13/12/2016	Vic_Murray_AboveBC	Low Reliability	46	\$6 840	\$ 150
13/12/2016	Vic_Murray_AboveBC	Low Reliability	44	\$6 630	\$ 150
8/12/2016	Vic_Murray_BelowBC	High Reliability	62	\$191 270	\$3 100
9/12/2016	Vic_Murray_BelowBC	High Reliability	22	\$72 600	\$3 300
9/12/2016	Vic_Murray_BelowBC	High Reliability	2	\$2 250	\$1 500
9/12/2016	Vic_Murray_BelowBC	High Reliability	2	\$3 300	\$1 500
14/12/2016	Vic_Murray_BelowBC	High Reliability	2	\$3 000	\$1 500
16/12/2016	Vic_Murray_BelowBC	High Reliability	38	\$117 800	\$3 100
16/12/2016	Vic_Murray_BelowBC	High Reliability	2	\$2 550	\$1 700
22/12/2016	Vic_Murray_BelowBC	High Reliability	1	\$132 900	\$132 900
23/12/2016	Vic_Murray_BelowBC	High Reliability	2	\$1 800	\$1 000
5/12/2016	Vic_Murray_BelowBC	Low Reliability	5	\$1 500	\$ 300
12/12/2016	Vic_Murray_BelowBC	Low Reliability	5	\$ 480	\$ 100
23/12/2016	Vic_Murray_BelowBC	Low Reliability	1	\$ 1	\$ 2

* - Trades are within the bounds of two standard deviations for the catchment, but have been excluded