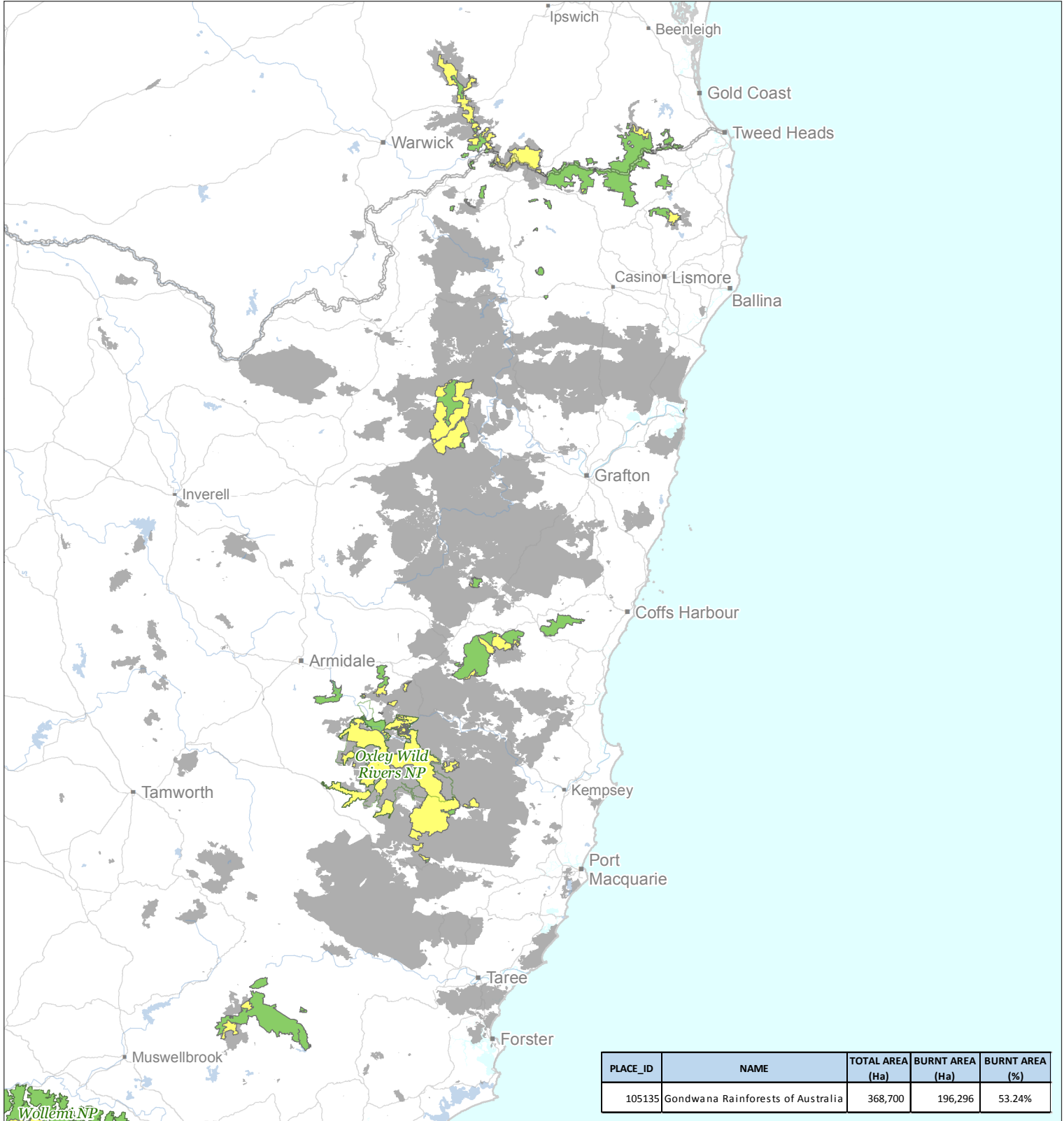


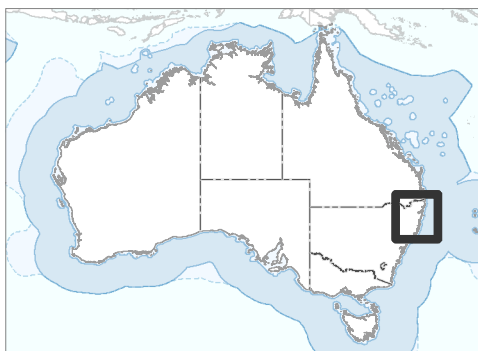
# Map 2. Bushfire impacts on World Heritage - as at 2020-02-12

## Gondwana Rainforests of Australia



0 25 50 75 100 125 km

© Copyright | Commonwealth of Australia, 2020.



Map produced by: the Environmental Resources Information Network

**Fire extent data sources:**  
 NSW Rural Fire Service – CC-BY  
 QLD Fire and Emergency Service – CC-BY

**Contextual data sources:** from the Department of Agriculture, Water and the Environment, Geoscience Australia and PSMA Australia.

**Caveat:** The information presented in this map has been provided by a range of groups and agencies. While every effort has been made to ensure accuracy and completeness, no guarantee is given, nor responsibility taken by the Commonwealth for errors or omissions, and the Commonwealth does not accept responsibility in respect of any information or advice given in relation to, or as a consequence of, anything containing herein.

**Notes:**  
 - "Burnt" refers simply to the area that is fire affected, no indication of fire intensity or other qualitative measure of impact  
 - Percentage Burnt is the area burnt as the percentage of the individual Heritage Property or Place total area  
 - Area Burnt is per individual Heritage Property or Place

### Bushfire burnt areas as at 2020-02-12

- World Heritage Areas Unburnt
- World Heritage Areas Burnt
- Burnt areas (Outside World Heritage Areas)



**Australian Government**  
 Department of Agriculture,  
 Water and the Environment