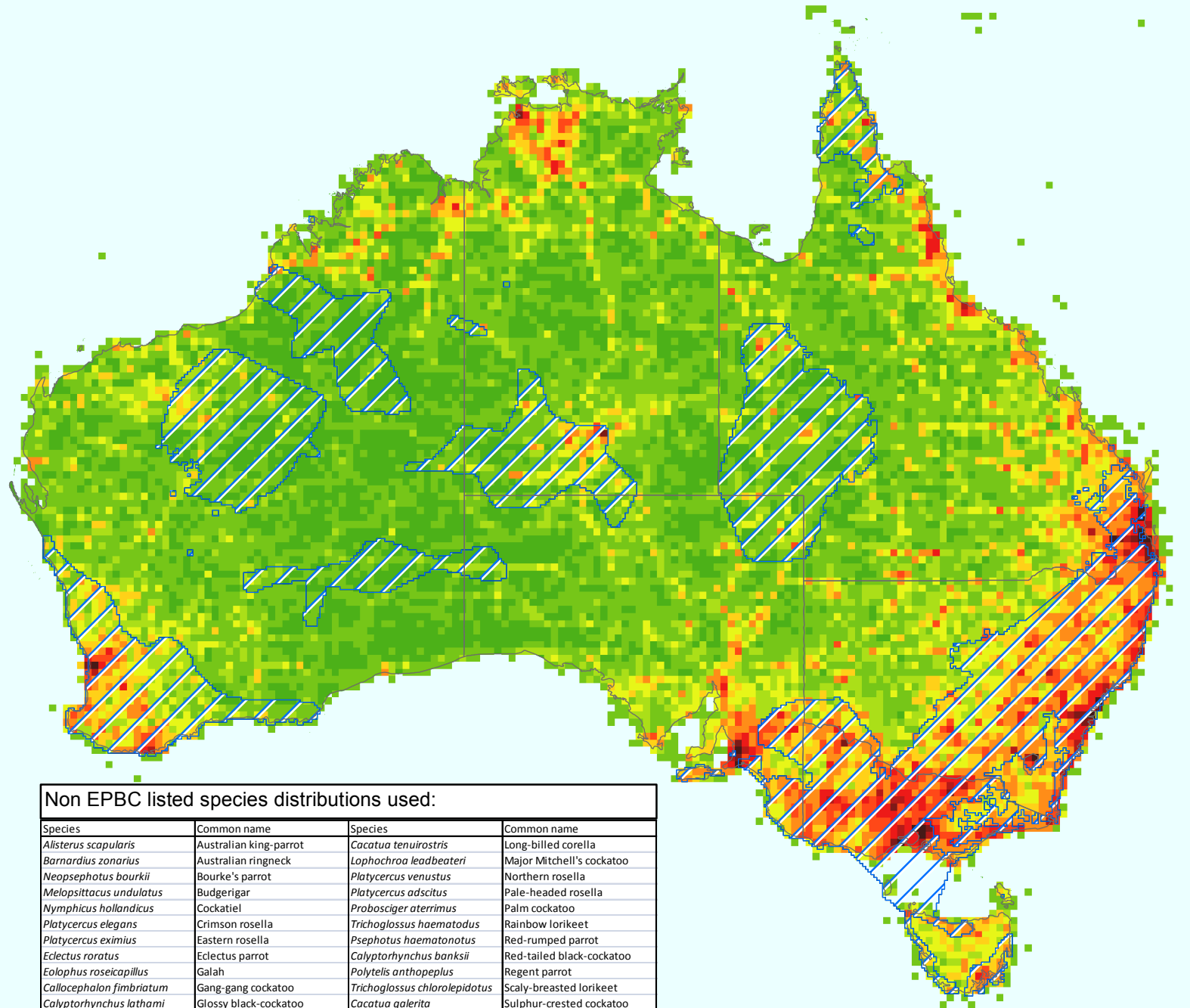


Density of observations of native Australian non-EPBC listed species which may be affected by Psittacine Beak and Feather Disease

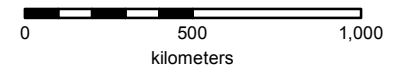
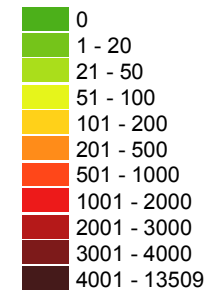
This map shows the density of observations for native Australian non-threatened species which may be affected by Psittacine Beak and Feather Disease identified in the Commonwealth Threat Abatement Plan (2005). Density was estimated by calculating the number of observations per 25km² using validated observation points. The point data have been provided to the Australian Government by Birdlife Australia, the Australian Bird and Bat Banding Scheme, State Governments and State Museums, using records from 1977 onwards. The densities shown on this map are indicative only and accuracy may vary depending on survey effort and detectability of individual species.



EPBC Listed species

Distribution

No of observations



Non EPBC listed species distributions used:

Species	Common name	Species	Common name
<i>Alisterus scapularis</i>	Australian king-parrot	<i>Cacatua tenuirostris</i>	Long-billed corella
<i>Barnardius zonarius</i>	Australian ringneck	<i>Lophochroa leadbeateri</i>	Major Mitchell's cockatoo
<i>Neopsophotus bourkii</i>	Bourke's parrot	<i>Platycercus venustus</i>	Northern rosella
<i>Melopsittacus undulatus</i>	Budgerigar	<i>Platycercus adscitus</i>	Pale-headed rosella
<i>Nymphicus hollandicus</i>	Cockatiel	<i>Probosciger aterrimus</i>	Palm cockatoo
<i>Platycercus elegans</i>	Crimson rosella	<i>Trichoglossus haematodus</i>	Rainbow lorikeet
<i>Platycercus eximius</i>	Eastern rosella	<i>Psephotus haematonotus</i>	Red-rumped parrot
<i>Eclectus roratus</i>	Eclectus parrot	<i>Calyptorhynchus banksii</i>	Red-tailed black-cockatoo
<i>Eolophus roseicapillus</i>	Galah	<i>Polytelis anthopeplus</i>	Regent parrot
<i>Callocephalon fimbriatum</i>	Gang-gang cockatoo	<i>Trichoglossus chlorolepidotus</i>	Scaly-breasted lorikeet
<i>Calyptorhynchus lathamii</i>	Glossy black-cockatoo	<i>Cacatua galerita</i>	Sulphur-crested cockatoo
<i>Psephotus dissimilis</i>	Hooded parrot	<i>Platycercus icterotis</i>	Western rosella
<i>Cacatua sanguinea</i>	Little corella	<i>Calyptorhynchus funereus</i>	Yellow-tailed black-cockatoo

Produced by:
Environmental Resources Information Network
Australian Government
Department of the Environment and Energy
July 2016
© Commonwealth of Australia, 2016

Datum: Geocentric Datum of Australia 1994

Caveat:
The information in this map has been compiled from a range of sources. While every effort has been made to ensure accuracy and completeness, no guarantee is given, nor responsibility taken by the Commonwealth for errors or omissions, and the Commonwealth does not accept responsibility in respect of any information or advice given in relation to, or as a consequence of, anything containing herein.