



REFERENCE

Plant exports guide—inspection techniques for logs in stockpiles

In this document

This document contains the following topics:

- Purpose of this document..... 2
- General notes on inspecting logs..... 2
- Before you start 2
- Inspecting logs in stockpiles..... 2
- Related material..... 6
- Contact information..... 6
- Document information 6
- Version history 6

This is a CONTROLLED document. Any documents appearing in paper form are not controlled and should be checked against the IML version prior to use.

Purpose of this document

This document has been written for authorised officers (AOs) as a reference guide on techniques to use when inspecting logs in stockpiles for export.

General notes on inspecting logs

- All presented logs are sampled from stockpiles before loading.
- Logs re-presented for reinspection may be sampled from stockpiles, vessel holds or loaded containers.
- All samples are inspected using suitable equipment.
- A mallet and chisel may be used to lift bark and identify possible infestation.

Before you start

Before starting their inspection, the AO ensures that they:

- check the importing country requirements to determine the requirements for the inspection
- have the correct inspection equipment
- have access to PEMS
- wear appropriate personal protective equipment
- have the current relevant instructional and reference material.

Inspecting logs in stockpiles

The following table illustrates and describes methods of taking samples of logs in stockpiles for inspection.

What does this look like	Description
	<p>Site inspection</p> <p>Example of logs in stockpiles.</p>
	<p>Inspection of stack</p> <p>The stockpile or stack is inspected by walking around the entire stockpile or stack.</p>

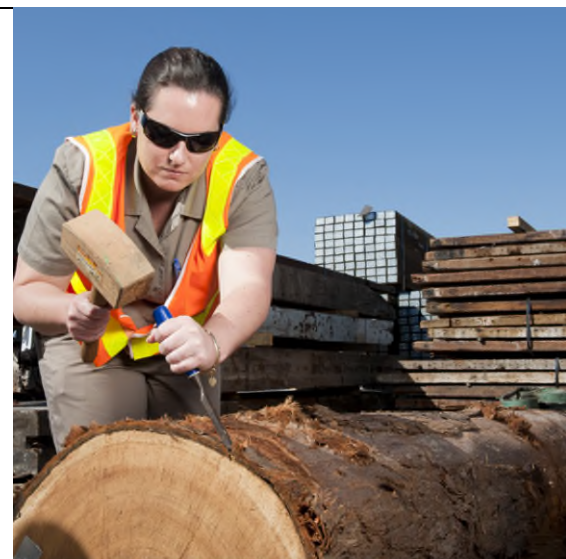
This is a CONTROLLED document. Any documents appearing in paper form are not controlled and should be checked against the IML version prior to use.

What does this look like**Description****Sample selection**

The exporter is asked to move samples to an inspection area.

**Inspection of both ends**

Both ends of the log samples are visually inspected.

**Use of hammer and chisel**

For logs with bark, any semi-attached bark is lifted with a hammer (mallet) or chisel to inspect the area underneath for pests.

What does this look like	Description
	<p>Use of knife</p> <p>A knife can also be used to lift semi-attached bark.</p>
	<p>Pests under bark</p> <p>The area under the bark is inspected for pests.</p>
	<p>Other areas of potential infestation</p> <p>Branch stubs, cracks and holes are probed to dislodge pests, using suitable equipment.</p>

This is a CONTROLLED document. Any documents appearing in paper form are not controlled and should be checked against the IML version prior to use.

What does this look like	Description
	<p>Soil</p> <p>Contaminants, including soil are inspected.</p>

Related material

- *Export Control Act 2020*
- Export Control (Plants and Plant Products) Rules 2021
- [Manual of Importing Country Requirement \(Micor – Plants\)](#)
- [Plant exports operations manual \(PEOM\)](#)
 - Guideline: *Inspection of forest products for export*
 - Work Instruction: *Inspection of forest products for export*
 - Reference: *Plant exports guide – equipment*
 - Reference: *Plant exports guide – specimen collection*

Contact information

- Authorised Officer Hotline: 1800 851 305
- Authorised Officer Program: PlantExportTraining@awe.gov.au
- Grain and Seed Exports Program Hotline: 02 6272 3229
- Grain and Seed Exports Program: Grain.Export@awe.gov.au

Document information

The following table contains administrative metadata.

Instructional Material Library document ID	Instructional material owner
IMLS-9-8013	Director, Grain and Seed Exports

Version history

The following table details the published date and amendment details for this document.

Version	Date	Amendment details
1	16/11/2021	First publication of this reference.

This is a CONTROLLED document. Any documents appearing in paper form are not controlled and should be checked against the IML version prior to use.