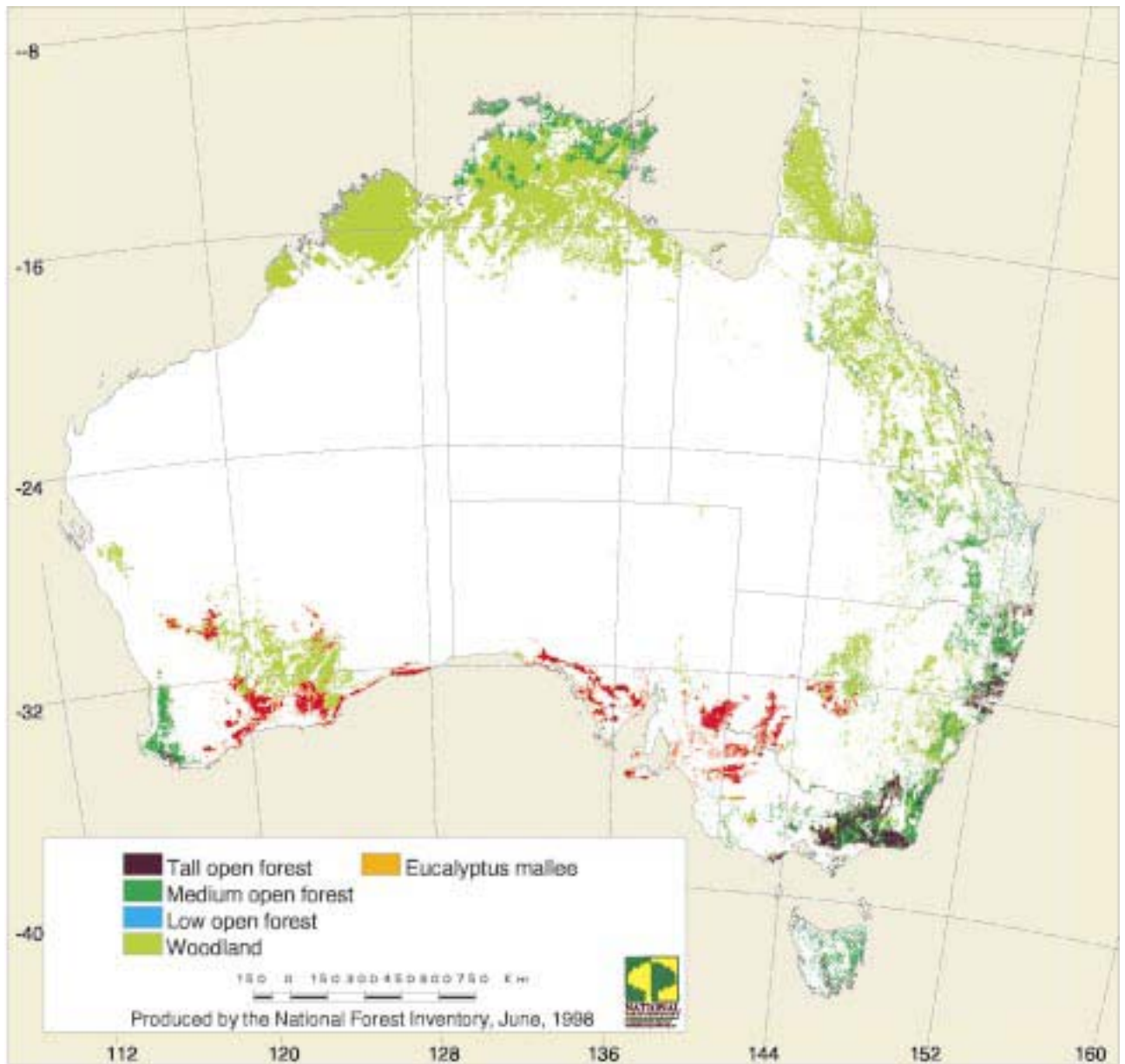


Maps



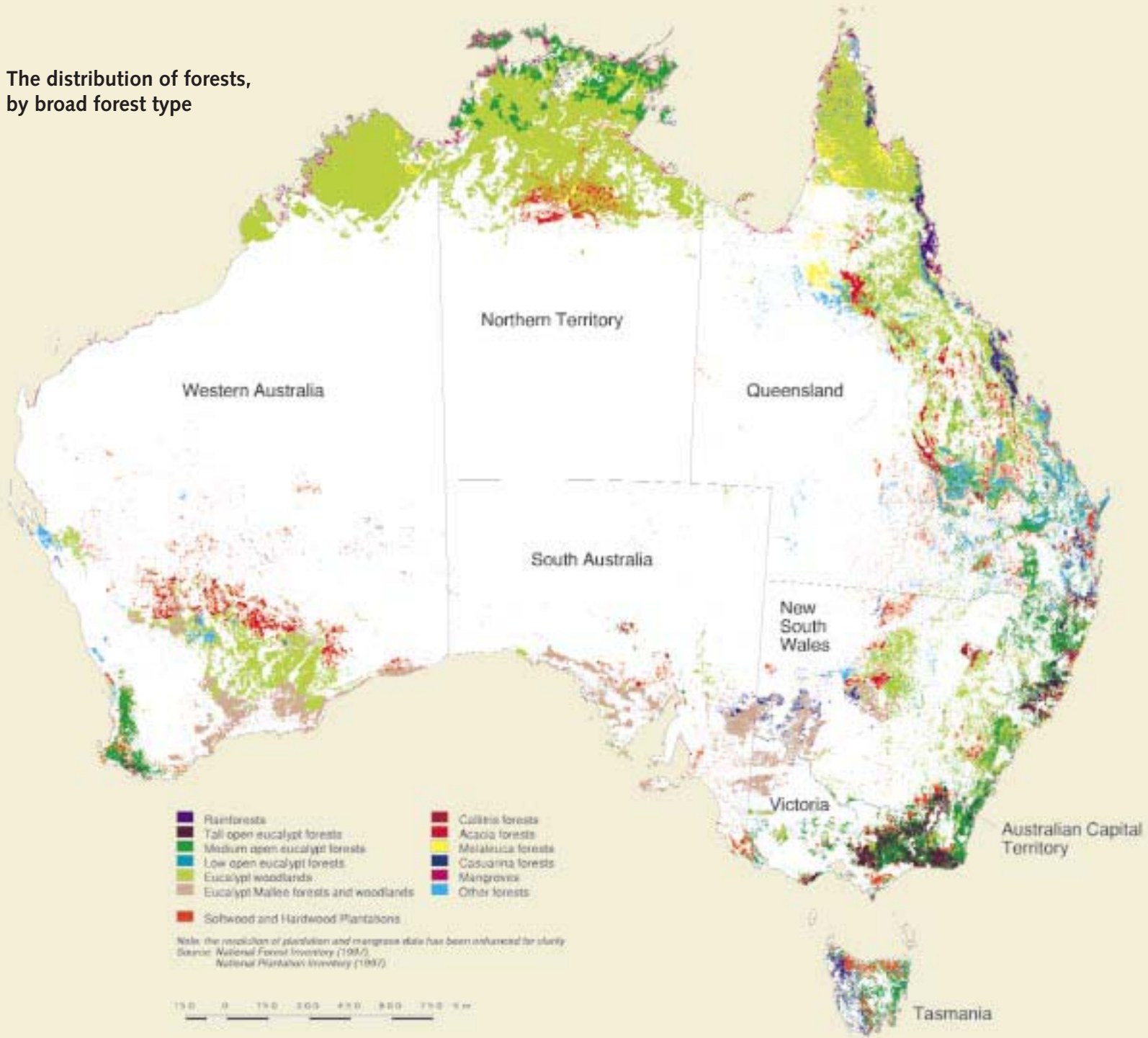
Map 1: The distribution of forests, by crown cover density

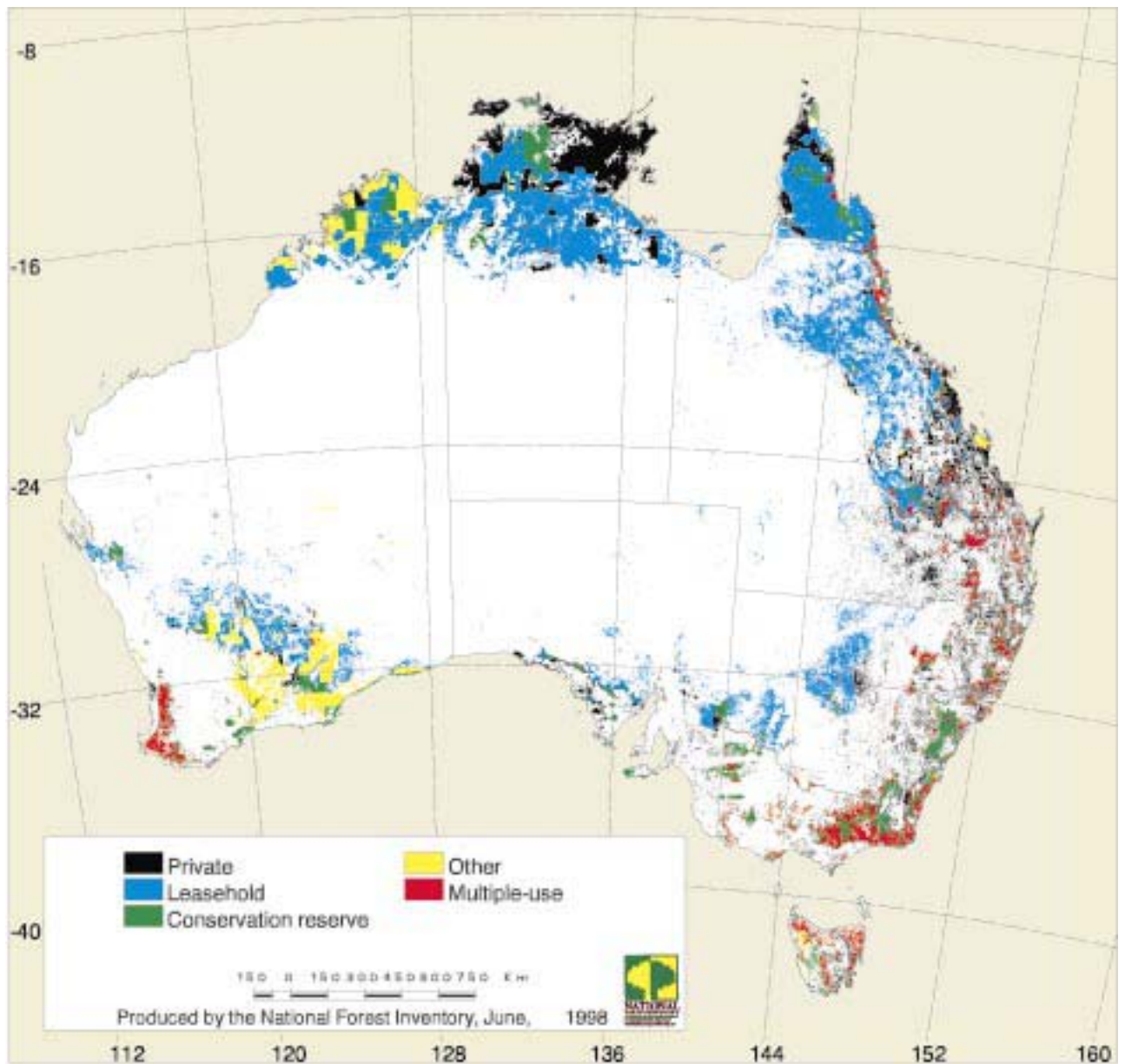
Sources:

Distribution of forests: National Forest Inventory (1997);

Rainfall: Derived from ESOCLIM by National Forest Inventory (1997).

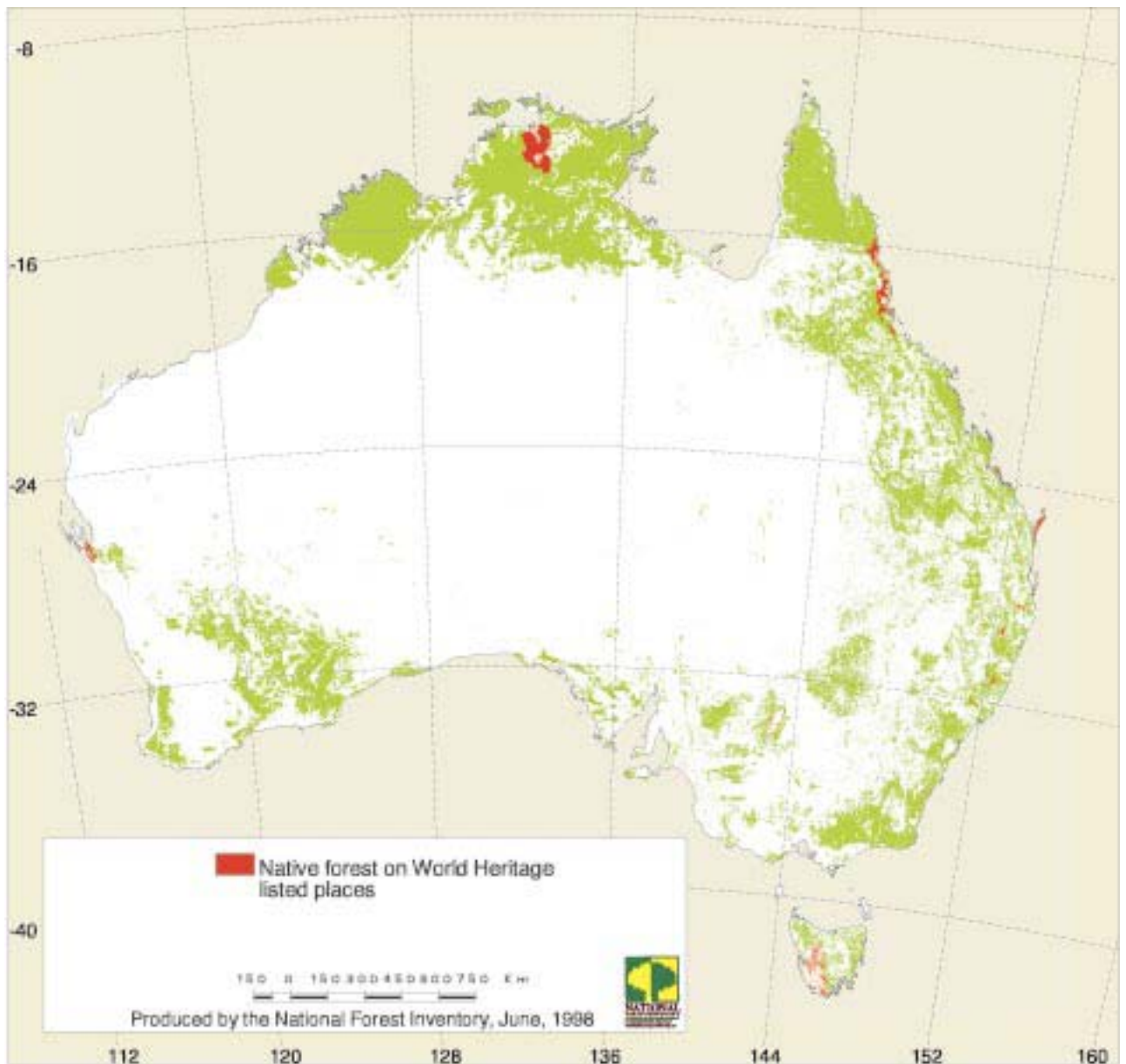
Map 2: The distribution of forests, by broad forest type





Map 3: Native forest, by tenure classes

Source: National Forest Inventory (1997).

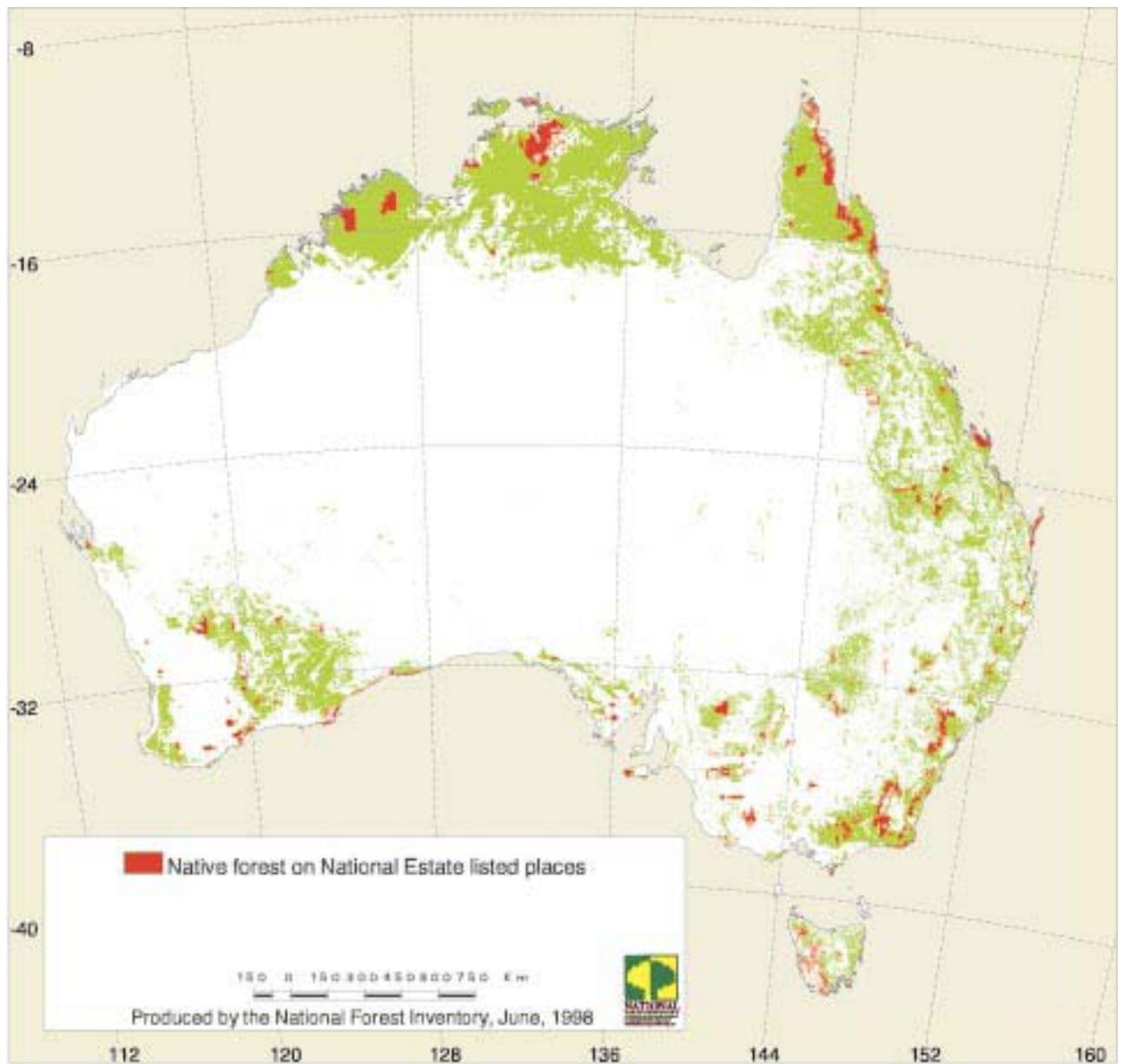


Map 4: Location of native forest on World Heritage listed places

Sources:

Forest: National Forest Inventory (1997);

World Heritage Area: Environment Australia (1995).

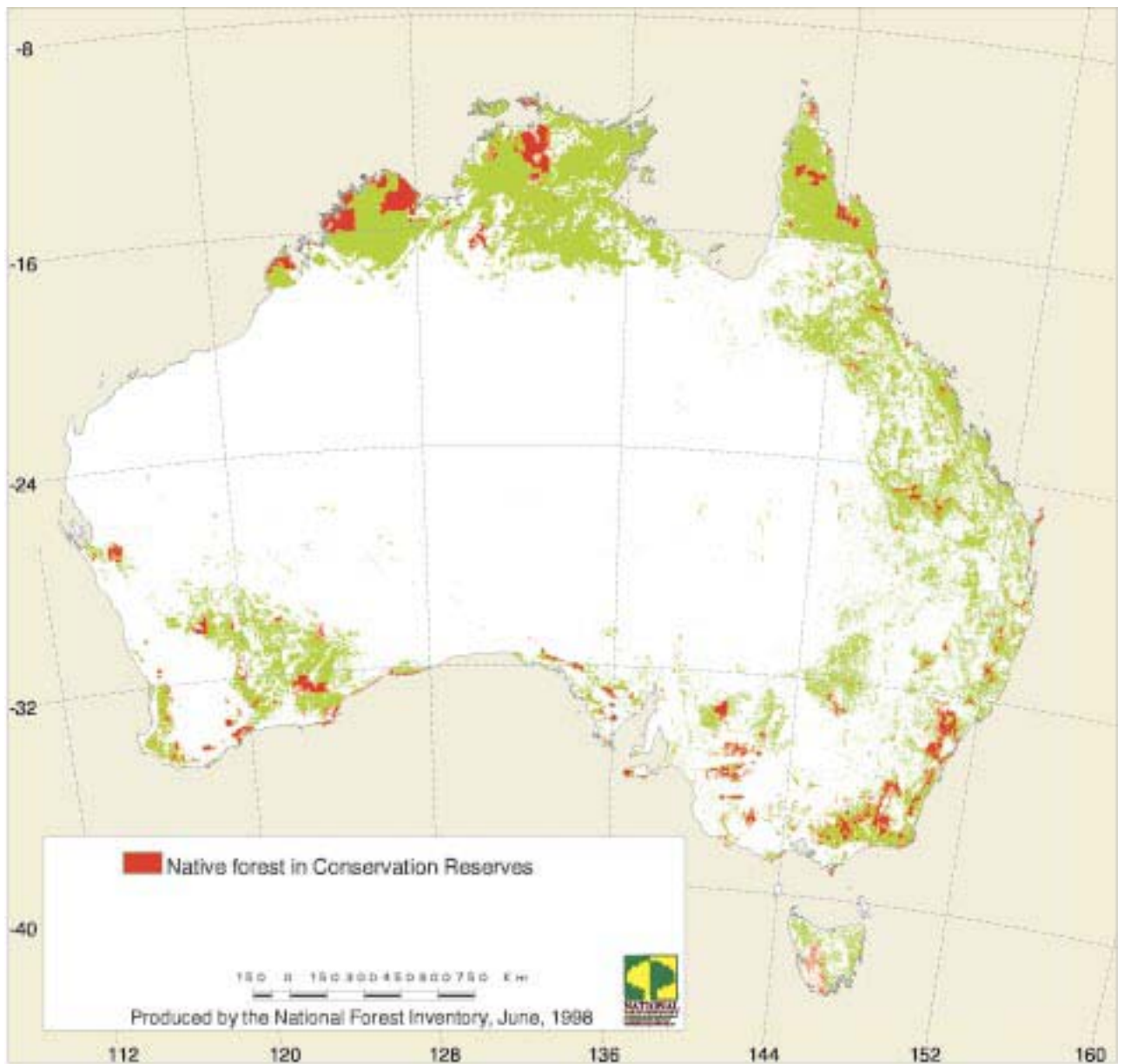


Map 5: Location of native forest on National Estate listed places

Sources:

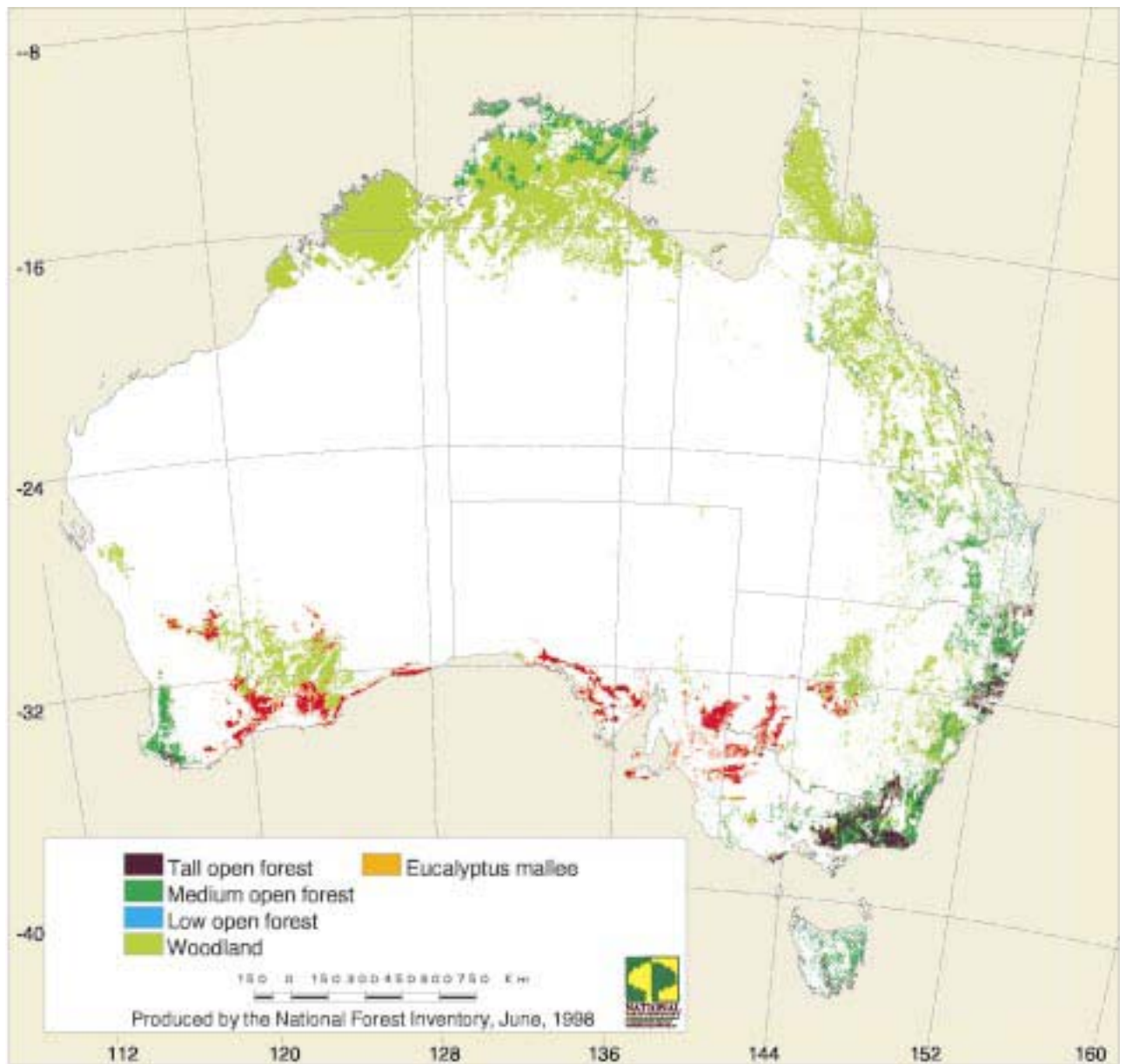
Forest: National Forest Inventory (1997);

National Estate: Environment Australia (1995).



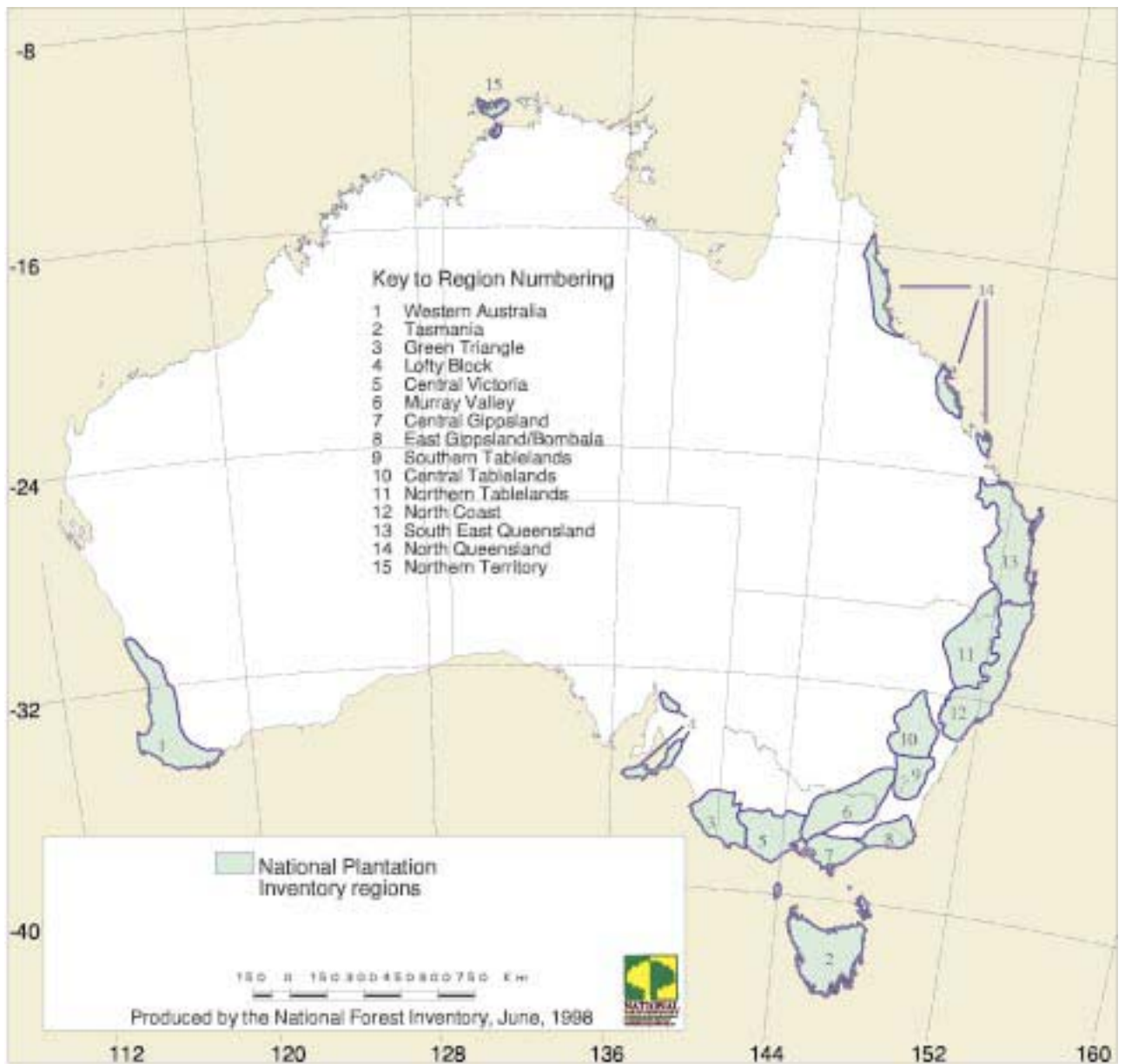
Map 6: Location of native forest in conservation reserves

Source: National Forest Inventory (1997).



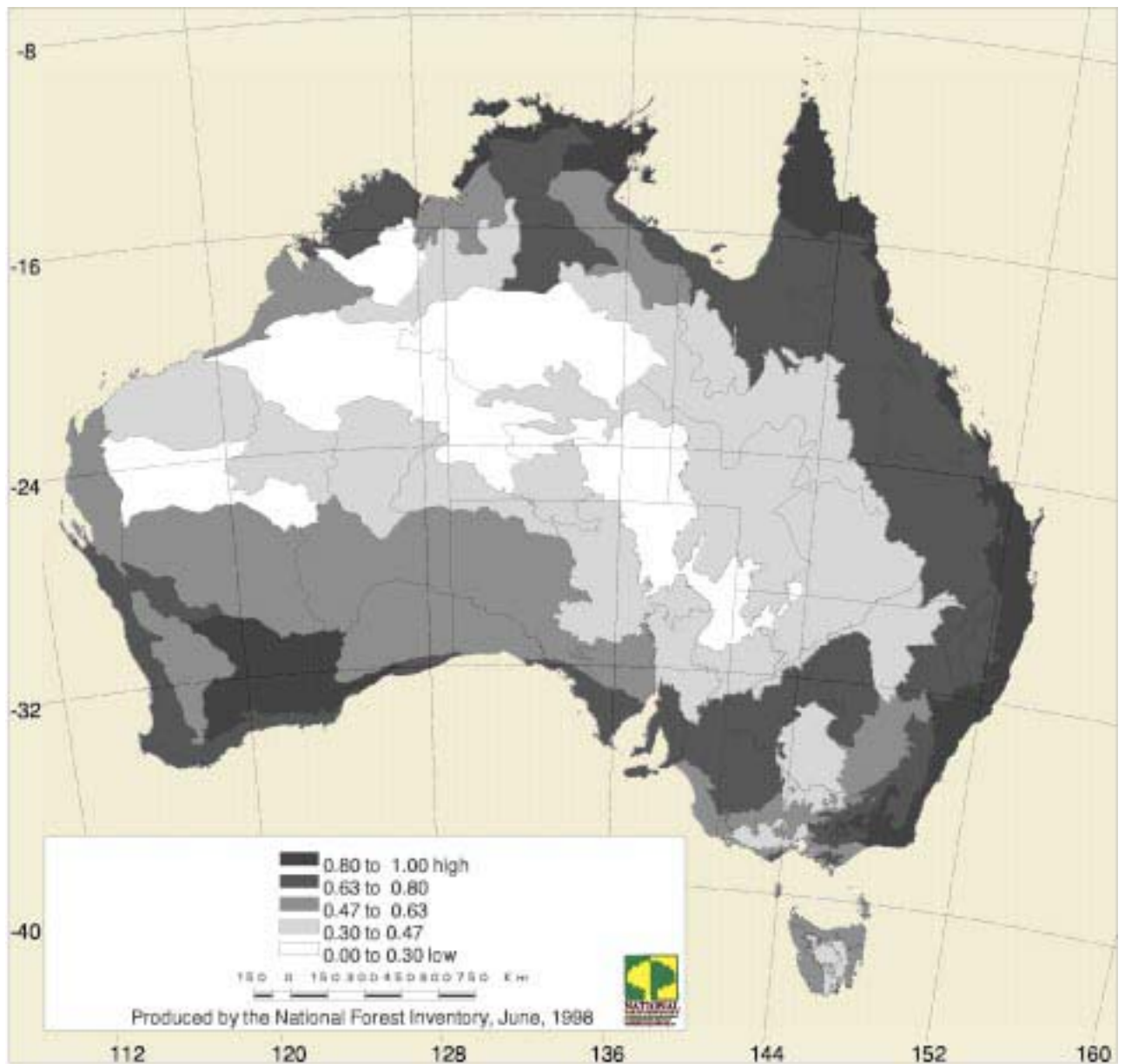
Map 7: Distribution of eucalypt forest, by structural classes

Source: National Forest Inventory (1997).



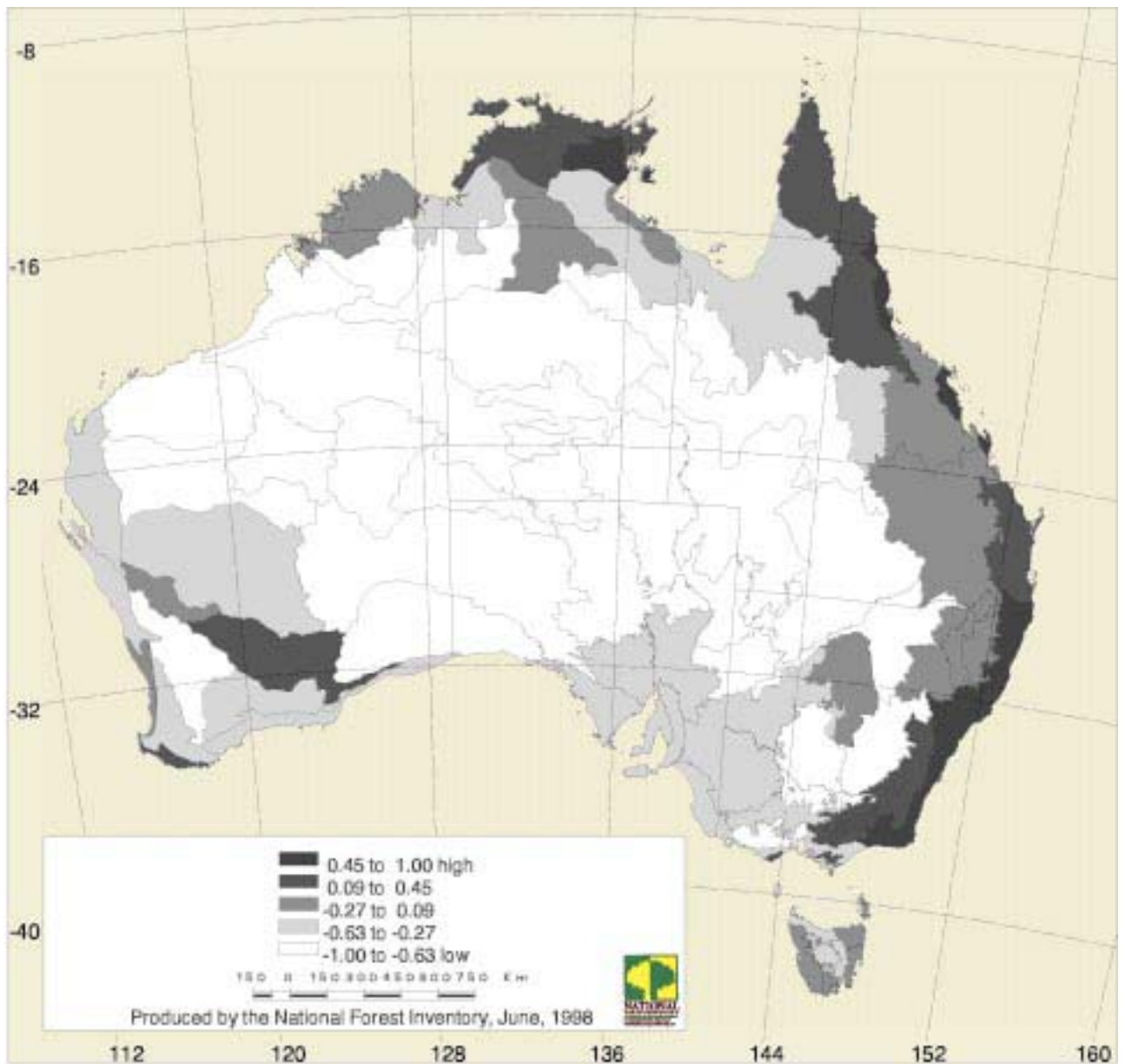
Map 8: National Plantation Inventory regions

Source: National Plantation Inventory (1997).



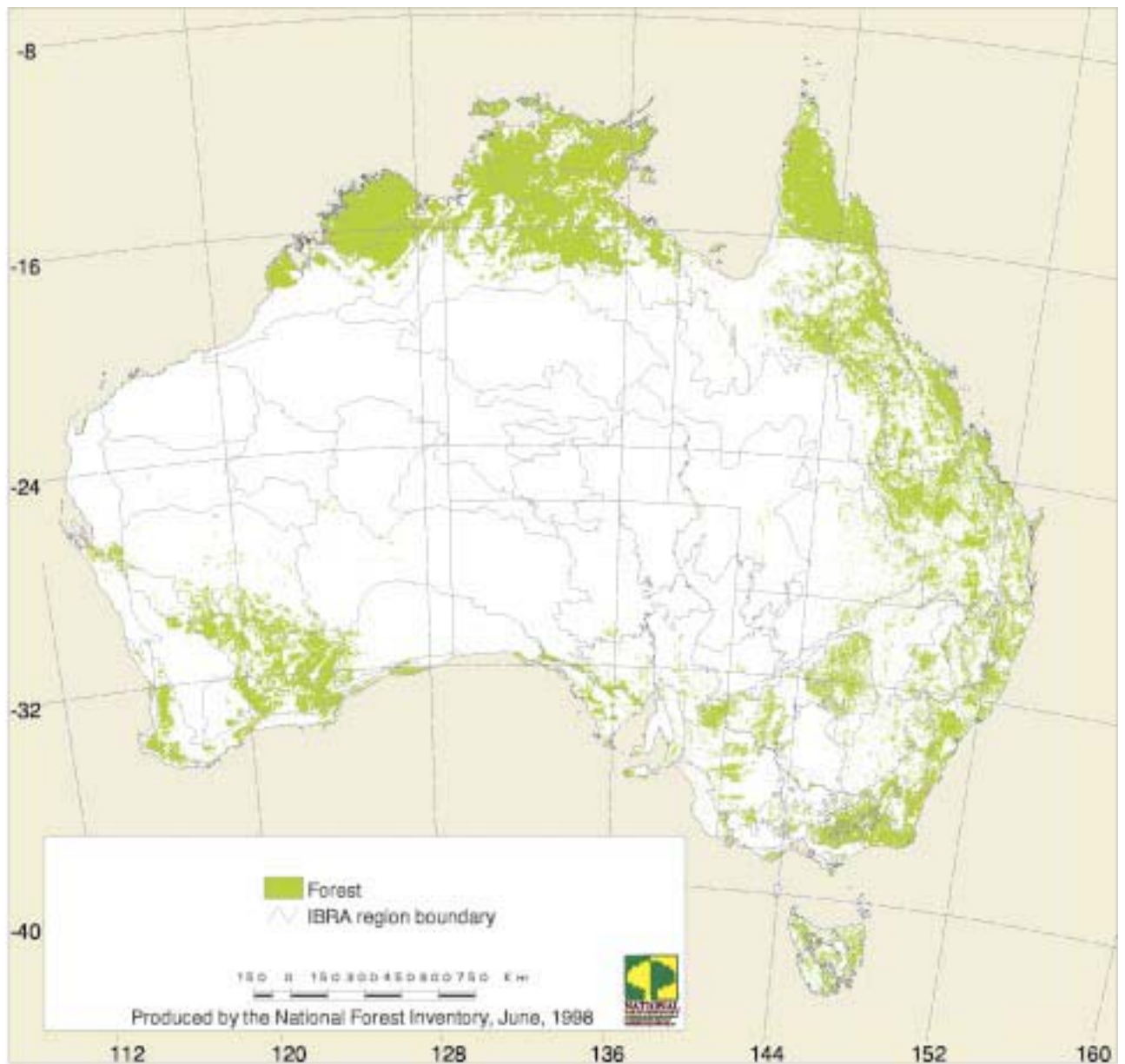
Map 9: Forest fragmentation as measured by same-edge proportion for IBRA regions

Source: Montreal First Approximation Report (1997).



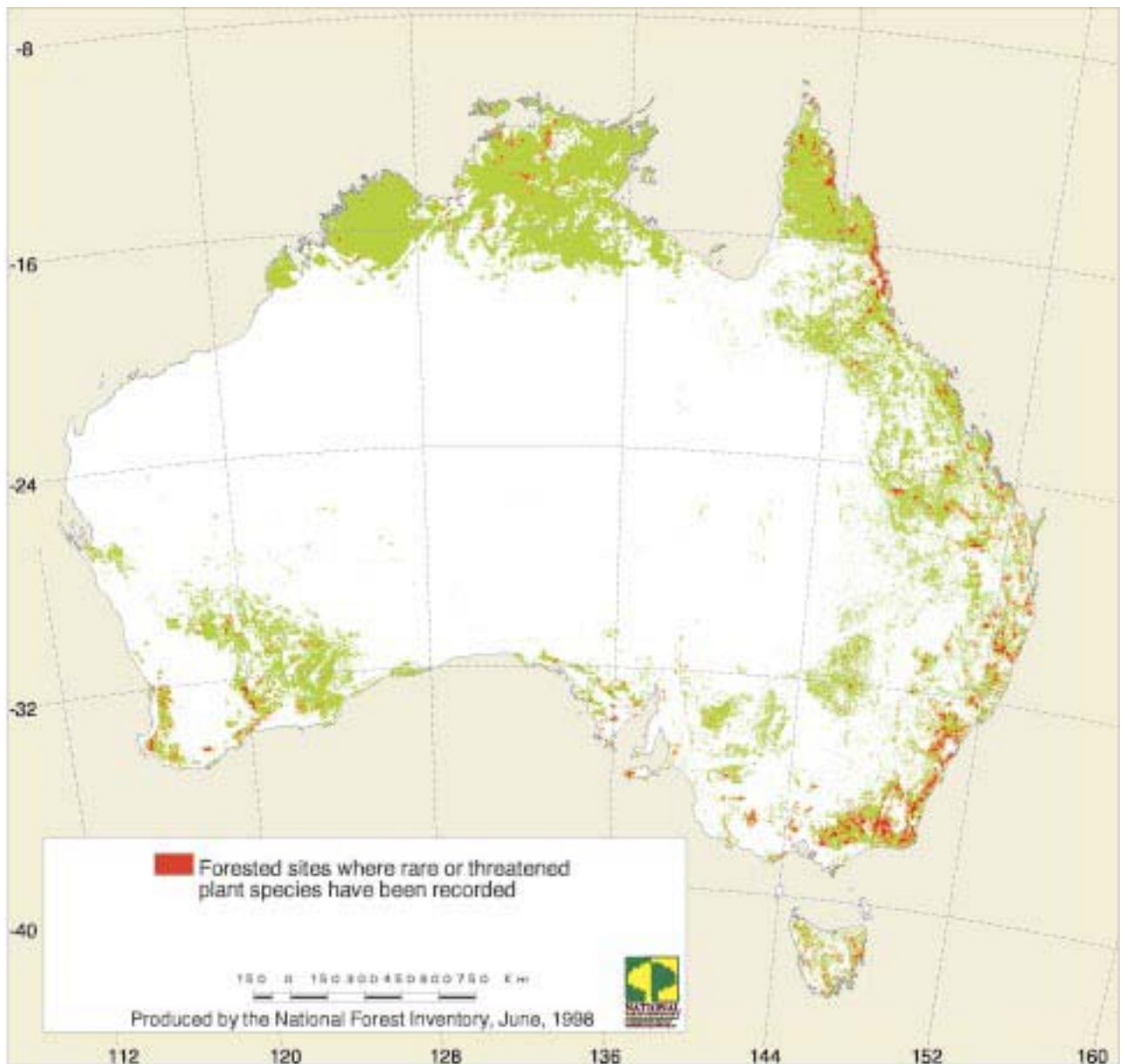
Map 10: Forest fragmentation as measured by Shannon contagion values for IBRA regions

Source: Montreal First Approximation Report (1997).



Map 11: Interim Biogeographic Regionalisation for Australia (IBRA regions)

Source: ANCA (1994).



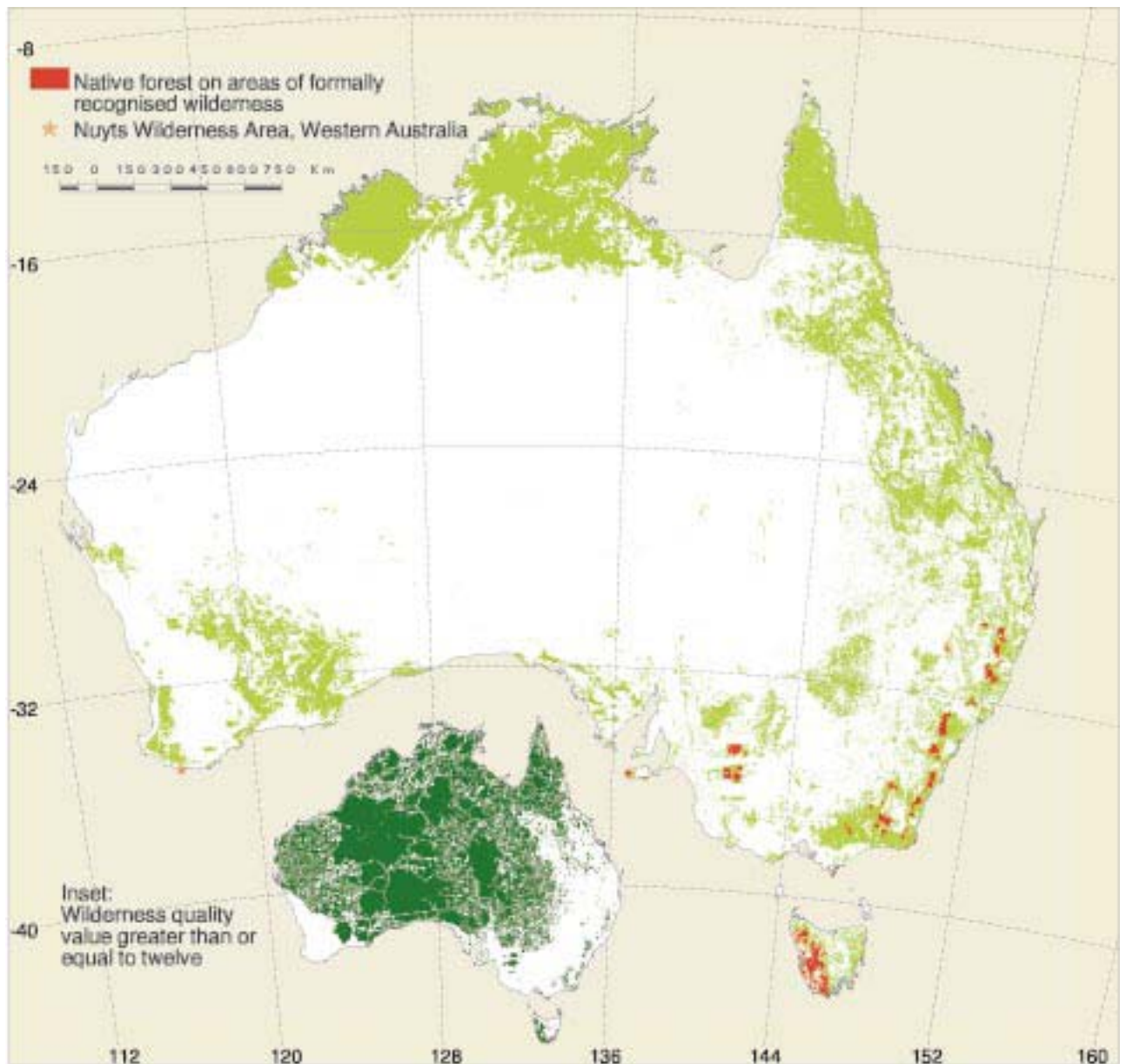
Map 12: The locations of forested sites where rare or threatened plant species have been recorded

Sources:

Forest: National Forest Inventory (1997);

ROTAP: Environment Australia (1995).

Note: This map shows point locations only. It cannot be used to determine spatial extent of species.



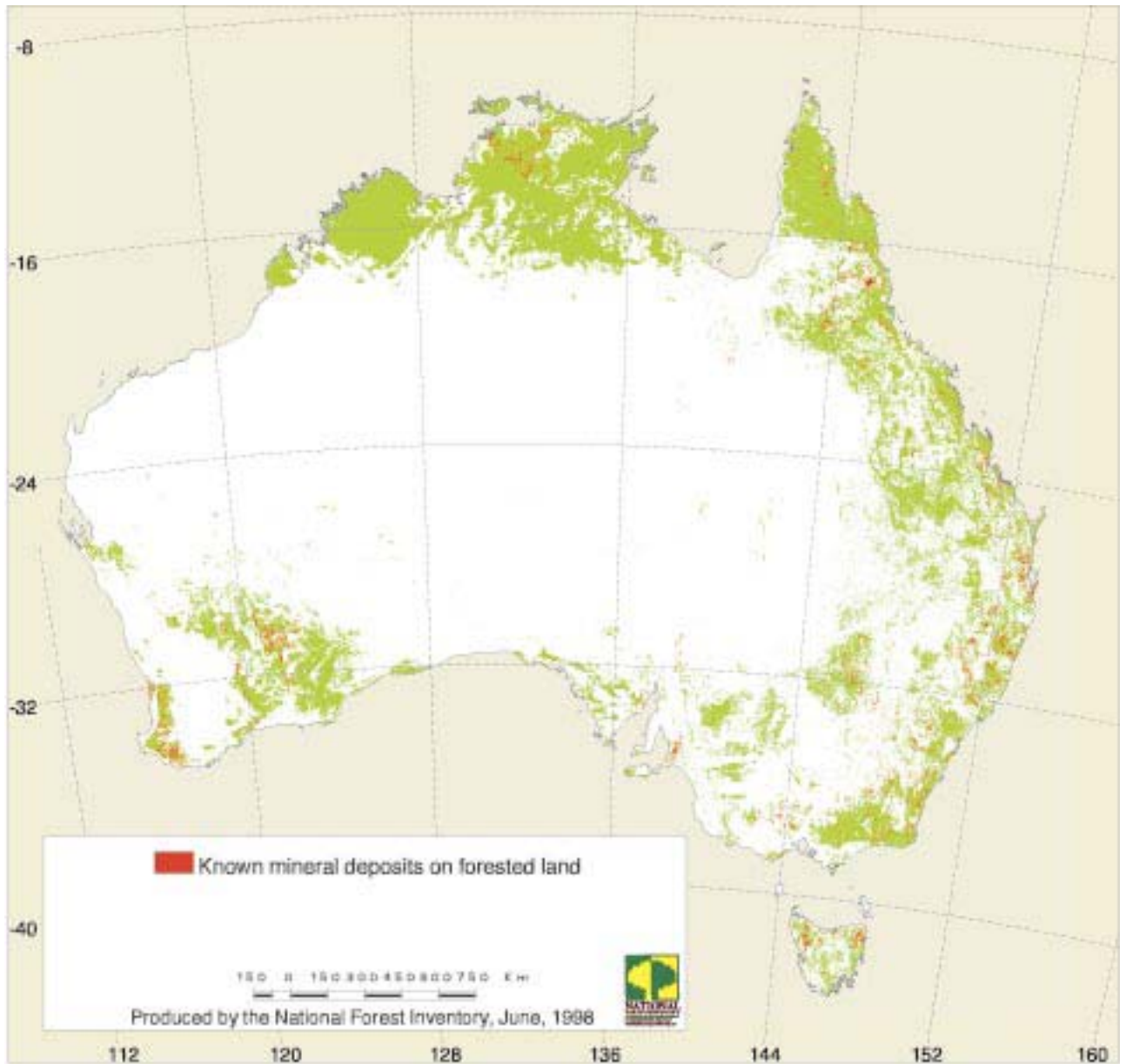
Map 13: Location of native forest on land where wilderness has been formally recognised. Inset shows areas with wilderness quality greater than or equal to twelve

Sources:

Formally recognised wilderness: State agencies;

Wilderness Quality: Environment Australia (1998).

Note: Resolution of native forest on formally recognised wilderness has been exaggerated for clarity.



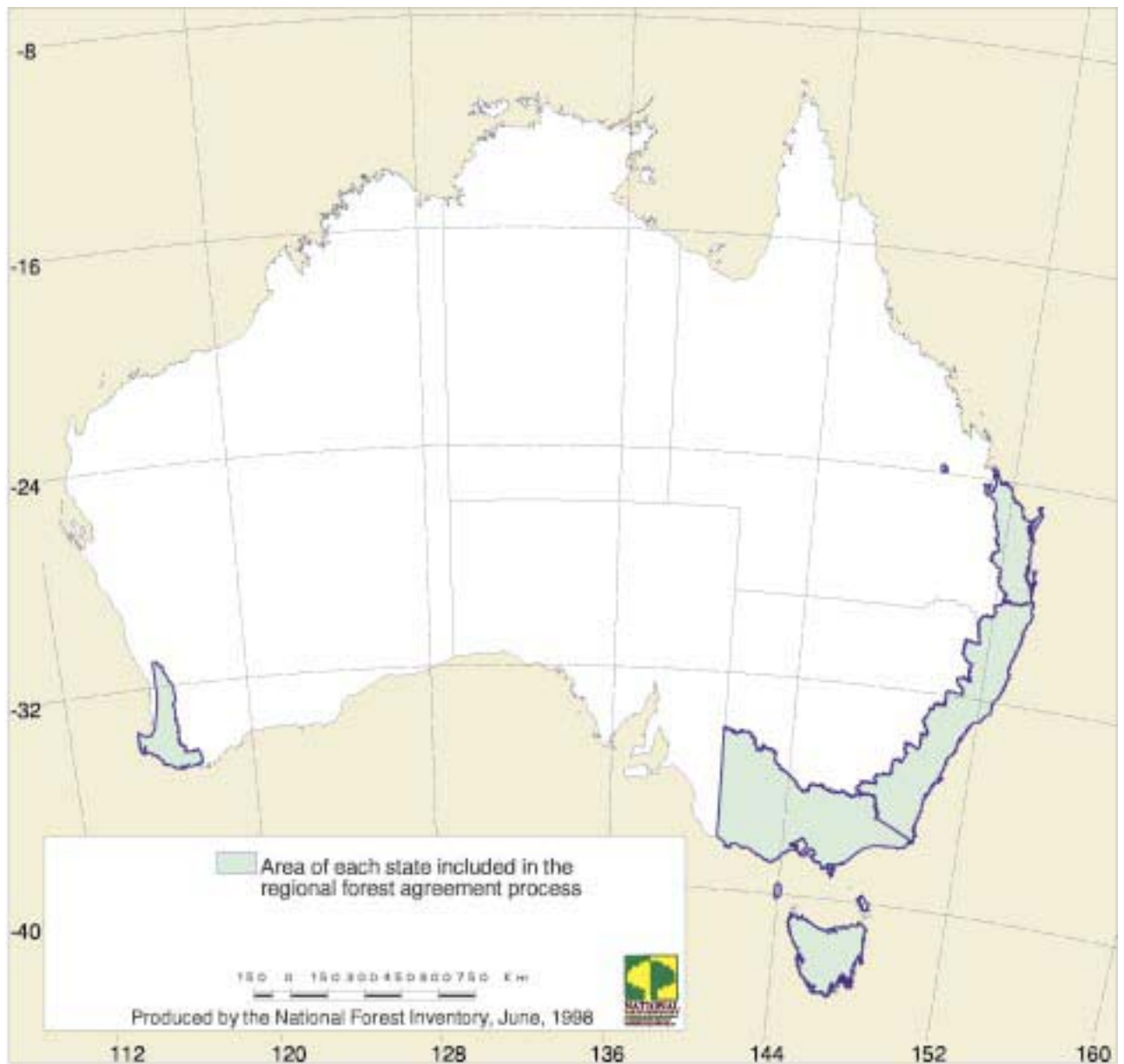
Map 14: Known locations of mineral deposits on forested land

Sources:

Forest: National Forest Inventory (1997);

Mineral locations: Bureau of Mineral Resources (1995)

Note: This map shows point locations only. It cannot be used to determine spatial distribution or economic value.



Map 15: Areas where regional forest agreements have or will be concluded

Source: National Forest Inventory (1997).

