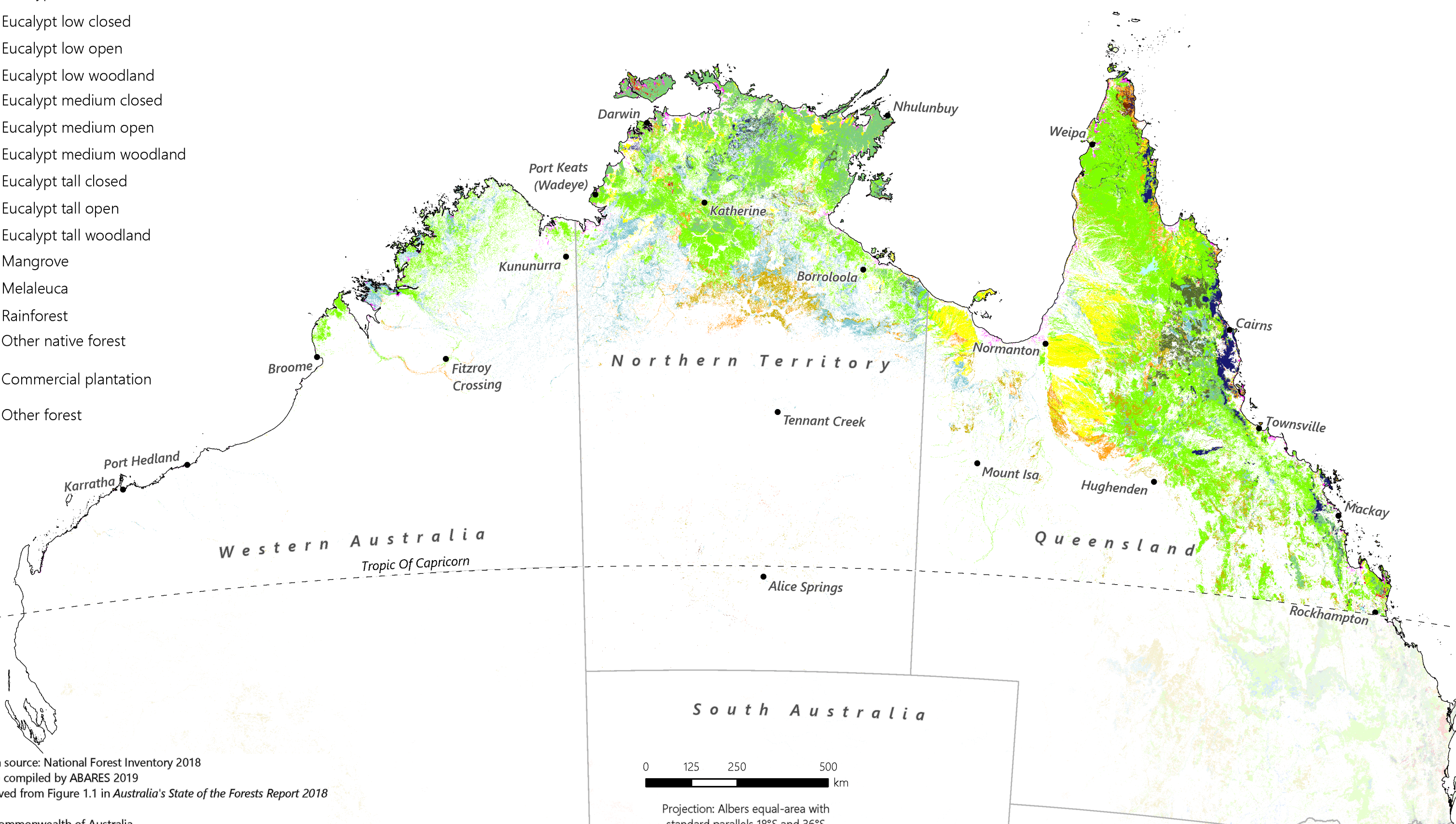




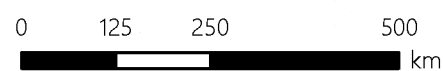
Forests in northern Australia, by forest subtype

Forest type

- Acacia
- Callitris
- Casuarina
- Eucalypt mallee open
- Eucalypt mallee woodland
- Eucalypt low closed
- Eucalypt low open
- Eucalypt low woodland
- Eucalypt medium closed
- Eucalypt medium open
- Eucalypt medium woodland
- Eucalypt tall closed
- Eucalypt tall open
- Eucalypt tall woodland
- Mangrove
- Melaleuca
- Rainforest
- Other native forest
- Commercial plantation
- Other forest



Data source: National Forest Inventory 2018
 Map compiled by ABARES 2019
 Derived from Figure 1.1 in *Australia's State of the Forests Report 2018*



Projection: Albers equal-area with
 standard parallels 18°S and 36°S